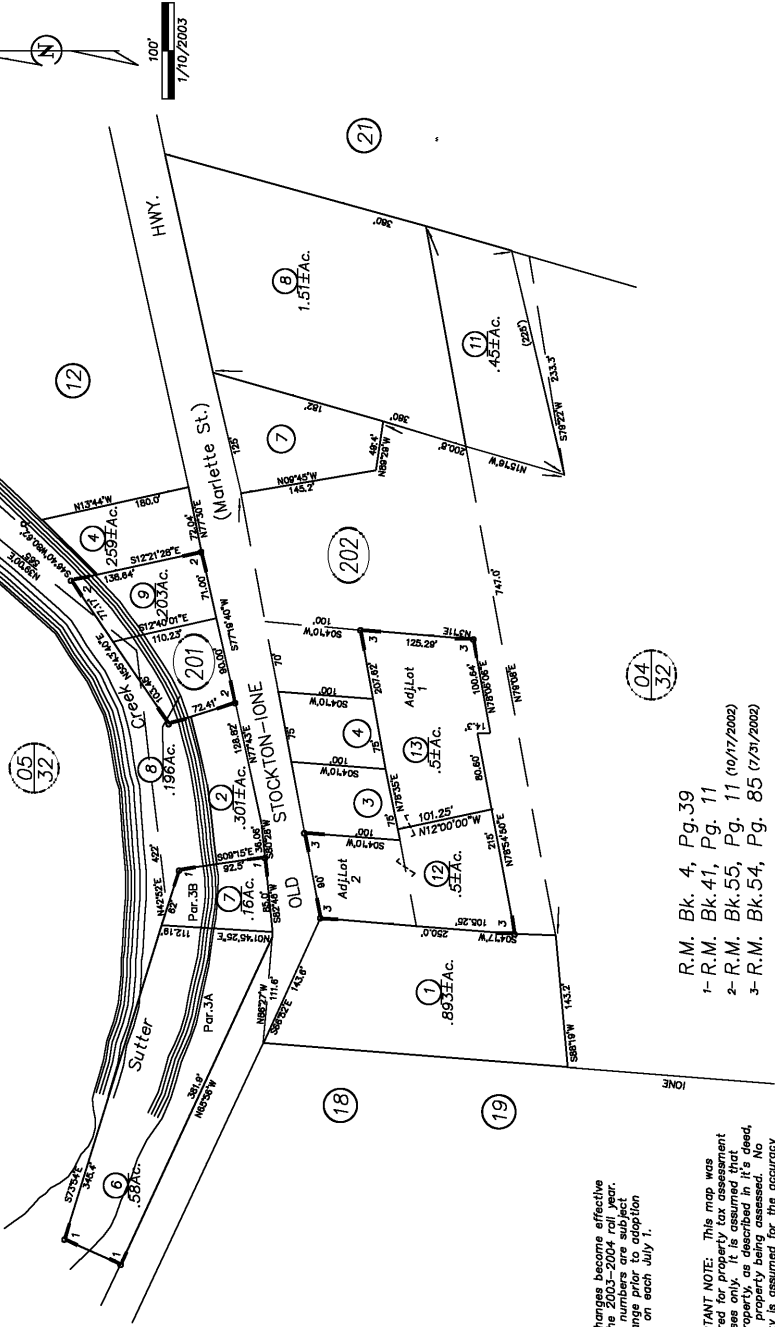
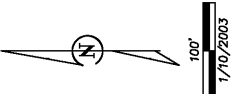


RANCHO ARROYO SECO



Map changes become effective on the 1st day of January. Parcel numbers are subject to change prior to adaptation of roll on each July 1.

IMPORTANT NOTE: This map was prepared for property tax assessment purposes. It is not intended to represent the property as described in it's deed, is the property being assessed. No liability is assumed for the accuracy of the data delineated hereon.

- R.M. Bk. 4, Pg.39
- 1- R.M. Bk.41, Pg. 11
- 2- R.M. Bk.55, Pg. 11 (10/17/2002)
- 3- R.M. Bk.54, Pg. 85 (7/31/2002)

05
32

NOTE-Assessor's Block Numbers Shown In Ellipses.
Assessor's Parcel Numbers Shown In Circles.