

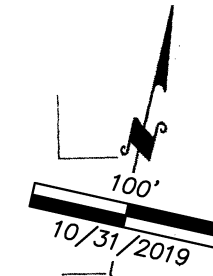
RANCHO ARROYO SECO

4-22

IMPORTANT NOTE: This map was prepared for property tax assessment purposes only. It is assumed that the property, as described in its deed, is the property being assessed. No liability is assumed for the accuracy of the data delineated hereon.

VIOLETTE LANE

Map changes become effective with the 2003-2004 roll year. Parcel numbers are subject to change prior to adoption of roll on each July 1.



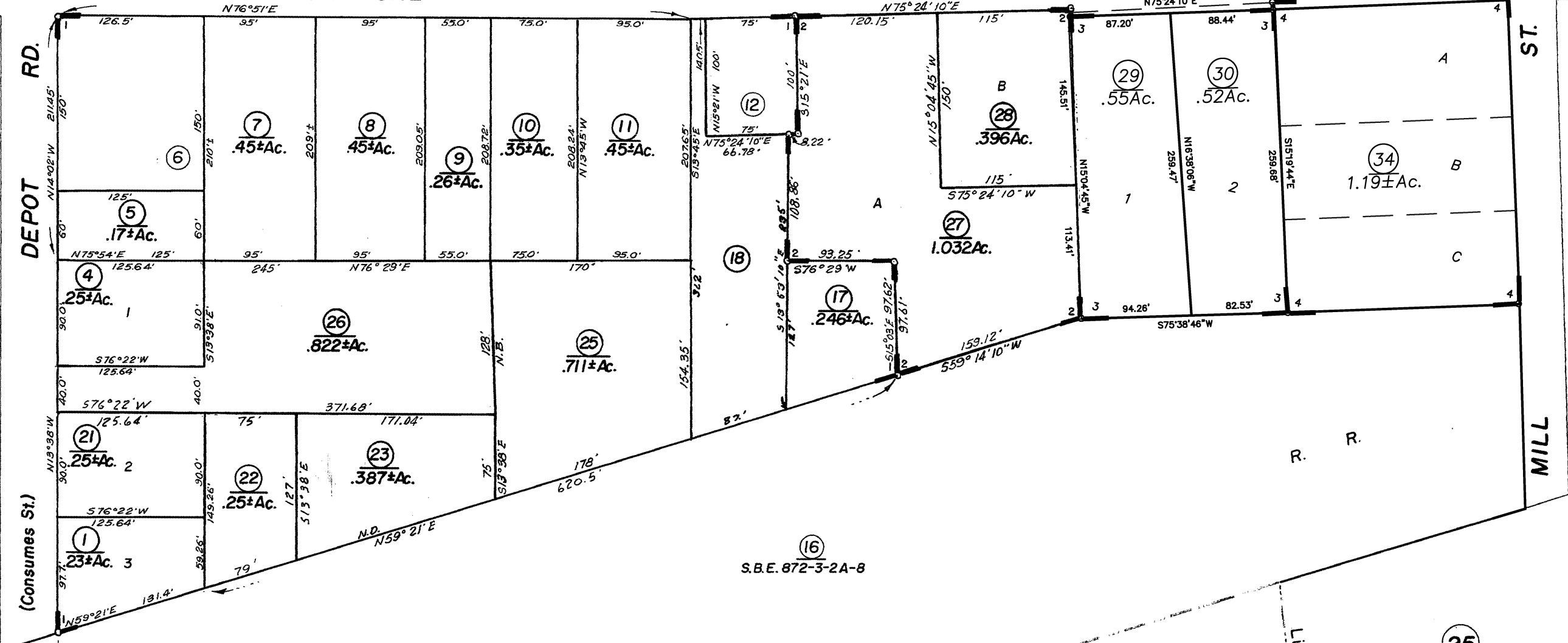
13

14

OLD STOCKTON - IONE

(MARLETTE ST.)

HWY.



21

23

21

16
S.B.E. 872-3-2A-8

25

Bk. 5

- 1-R.M. Bk. 5, Pg. 10
- 2-P.M. Bk. 29, Pg. 91
- 3-R.M. Bk. 47, Pg. 29 (2/26/93)
- 4-R.M. Bk. 54, Pg. 94 (8/23/2002)

34

Assessor's Map Bk. 4 , Pg. 22
County of Amador, Calif.

STATION 1404 +10.8
SOUTHERN

PACIFIC
City

Limits

lone