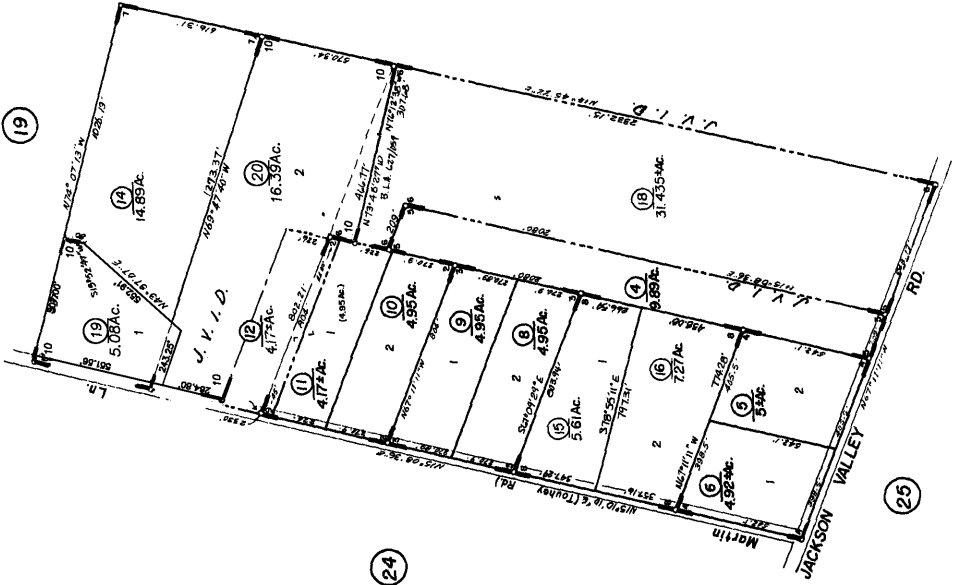


POR. RANCHO ARROYO SECO

(19)



(24)

(24)

(20)

- 1-R.M. Bk. 18, Pg. 95
- 2-R.M. Bk. 19, Pg. 21
- 3-R.M. Bk. 19, Pg. 52
- 4-R.M. Bk. 19, Pg. 51
- 5-R.M. Bk. 19, Pg. 53
- 6-R.M. Bk. 20, Pg. 53
- 7-R.M. Bk. 20, Pg. 68
- 8-R.M. Bk. 36, Pg. 83 B.L.A.
- 9-R.M. Bk. 43, Pg. 34 (1/27/88)
- 10-R.M. Bk. 45, Pg. 30 (1/14/91)
- 10-P.M. Bk. 54, Pg. 20 (6/15/2001)

IMPORTANT NOTE: This map was prepared for property tax assessment purposes only. It is assumed that the property is owned in its dead, and no changes have occurred since the property being assessed. No liability is assumed for the accuracy of the data delineated herein.

Map changes become effective with the 2002-2003 roll year. Parcel numbers are subject to change with the adoption of roll on each July 1.

(25)