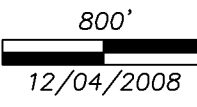
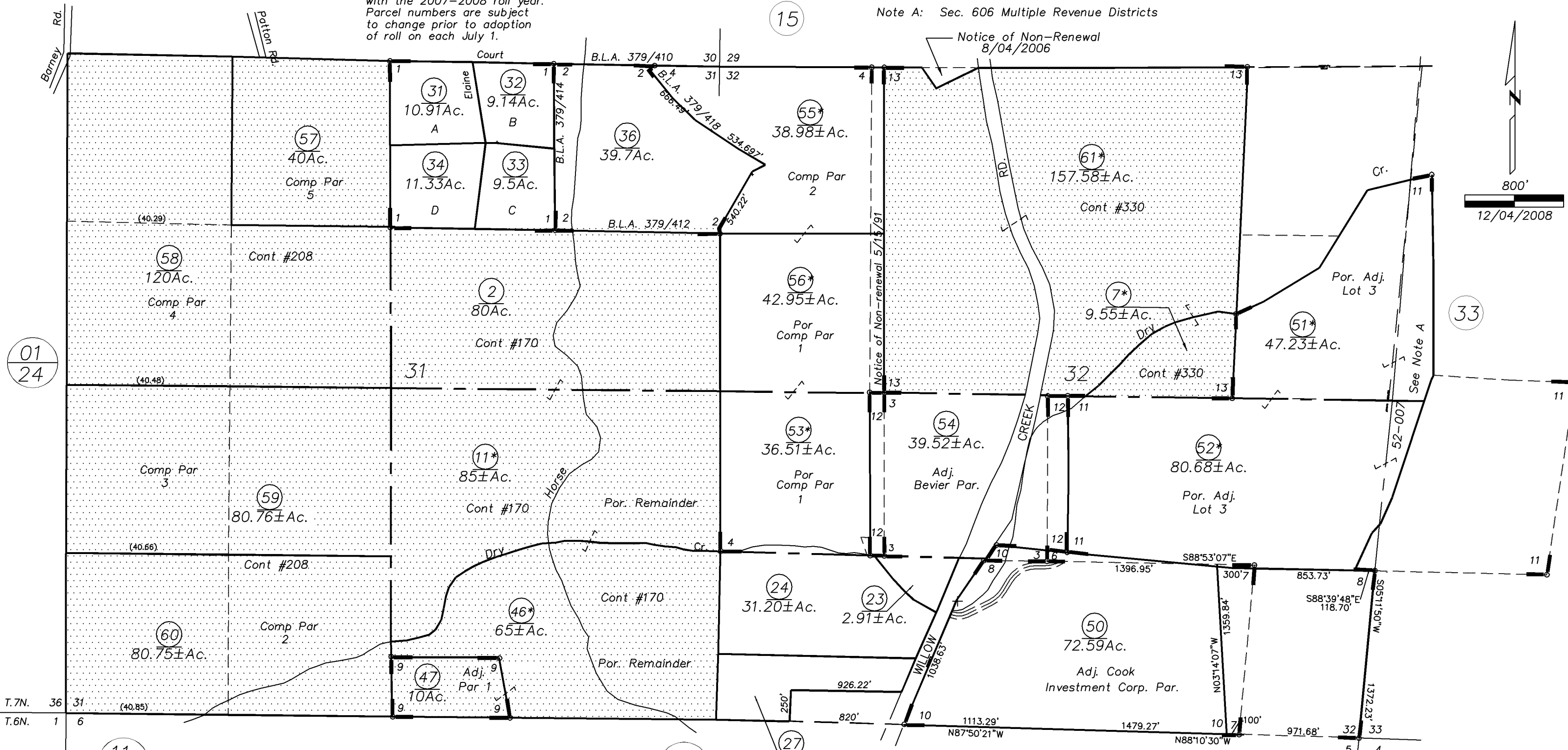


ALL SEC. 31, POR. SEC. 32, T.7N., R.10E., M.D.B. & M.

Map changes become effective with the 2007-2008 roll year. Parcel numbers are subject to change prior to adoption of roll on each July 1.

Note A: Sec. 606 Multiple Revenue Districts



01  
24

33

11  
02

11  
23

11  
02

61

- 1- R.M.Bk. 23, Pg. 5 (6/19/73)
- 2- R.M.Bk. 33, Pg. 73 (8/1/80)
- 3- R.M.Bk. 42, Pg. 3 (10/8/87)
- 4- R.M.Bk. 43, Pg. 100 (10/10/89)
- 5- R.M.Bk. 44, Pg. 45 (4/20/90)
- 6- R.M.Bk. 45, Pg. 60 (6/20/90)
- 7- R.M.Bk. 47, Pg. 1 (12/10/92)
- 8- R.M.Bk. 48, Pg. 21 (3/4/94)
- 9- R.M.Bk. 50, Pg. 80 (9/4/97)
- 10- R.M.Bk. 50, Pg. 77 (8/15/97)
- 11- R.M.Bk. 51, Pg. 35 (4/10/98)
- 12- R.M.Bk. 52, Pg. 70 (8/16/1999)
- 13- R.M.Bk. 59, Pg. 14 (8/10/2006)

IMPORTANT NOTE: This map was prepared for property tax assessment purposes only. It is assumed that the property, as described in it's deed, is the property being assessed. No liability is assumed for the accuracy of the data delineated hereon.

\*Parcel split by Tax Rate Area  
NOTE-Assessor's Block Numbers Shown in Ellipses.  
Assessor's Parcel Numbers Shown in Circles.