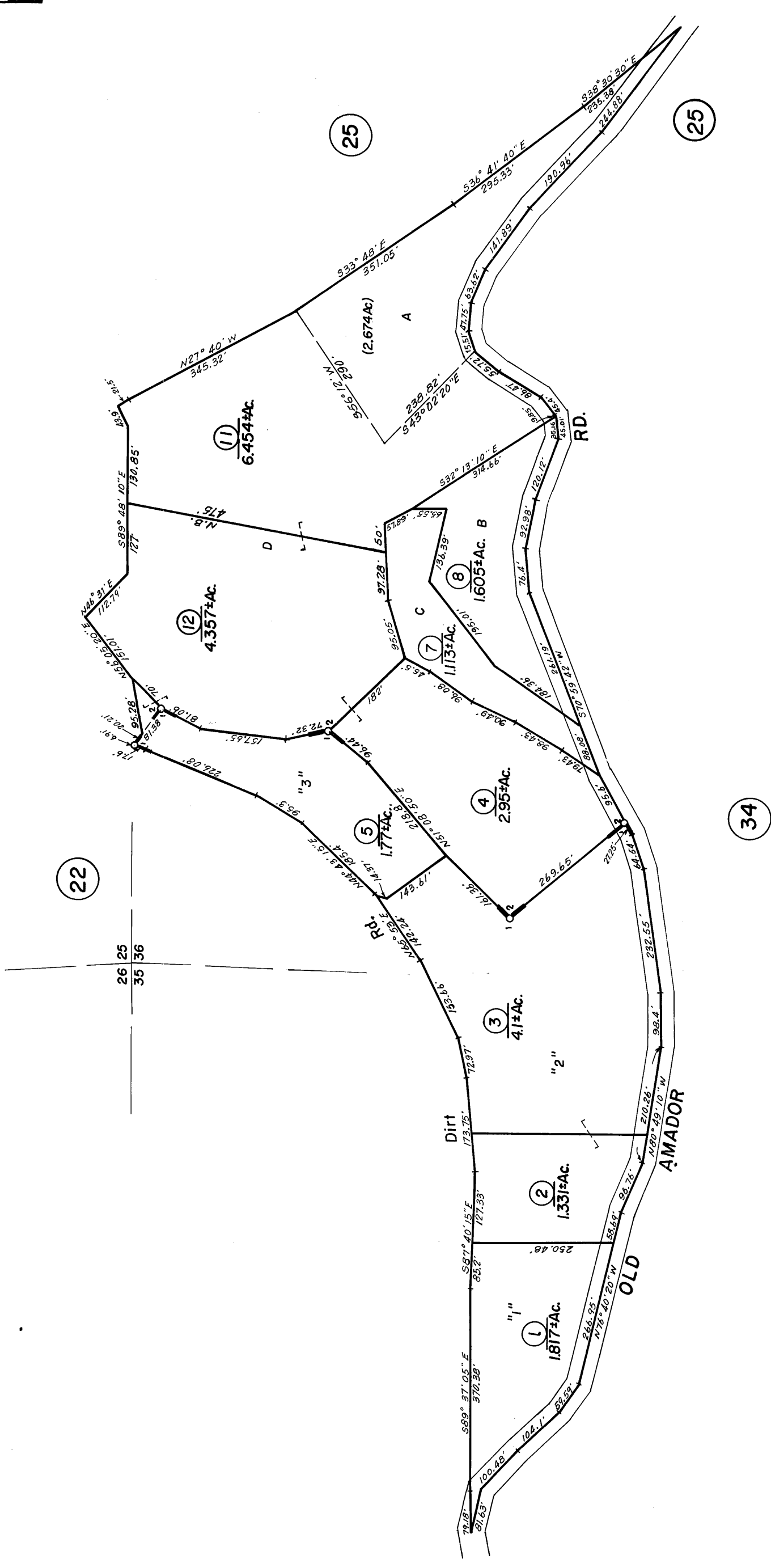
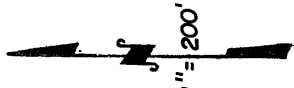


POR. NE 1/4 of NE 1/4, SEC. 35, T.7N., R.10E., M.D.B.&M.  
 POR. NW 1/4, SEC. 36, T.7N., R.10E., M.D.B.&M.

8-36

Tax Area Code



1 - R.M. Bk. 7, Pg. 75  
 2 - R.M. Bk. 10, Pg. 87

Assessor's Map Bk.8 , Pg. 36  
 County of Amador, Calif.

NOTE—Assessor's Block Numbers Shown in Ellipses.  
 Assessor's Parcel Numbers Shown in Circles.