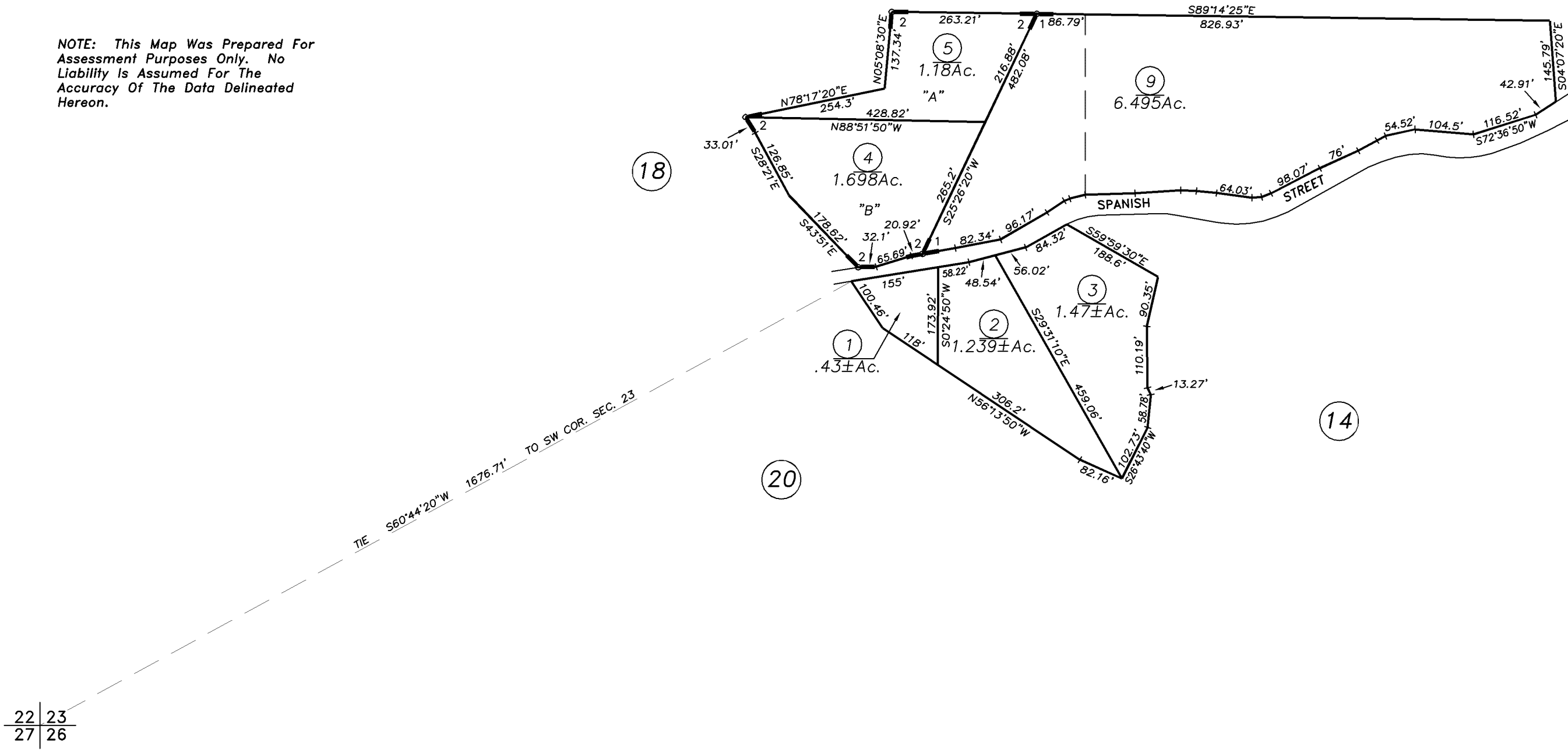
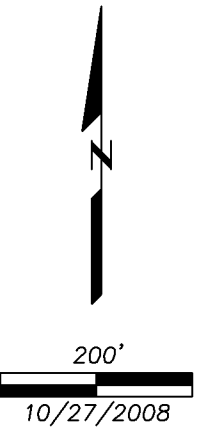


Map changes become effective with the 96-97 roll year. Parcel numbers are subject to change prior to adoption of roll on each July 1.

NOTE: This Map Was Prepared For Assessment Purposes Only. No Liability Is Assumed For The Accuracy Of The Data Delineated Hereon.



1-R.M. Bk. 7, Pg. 8
2-R.M. Bk.10, Pg.86

22 | 23
27 | 26

NOTE-Assessor's Block Numbers Shown in Ellipses.
Assessor's Parcel Numbers Shown in Circles.