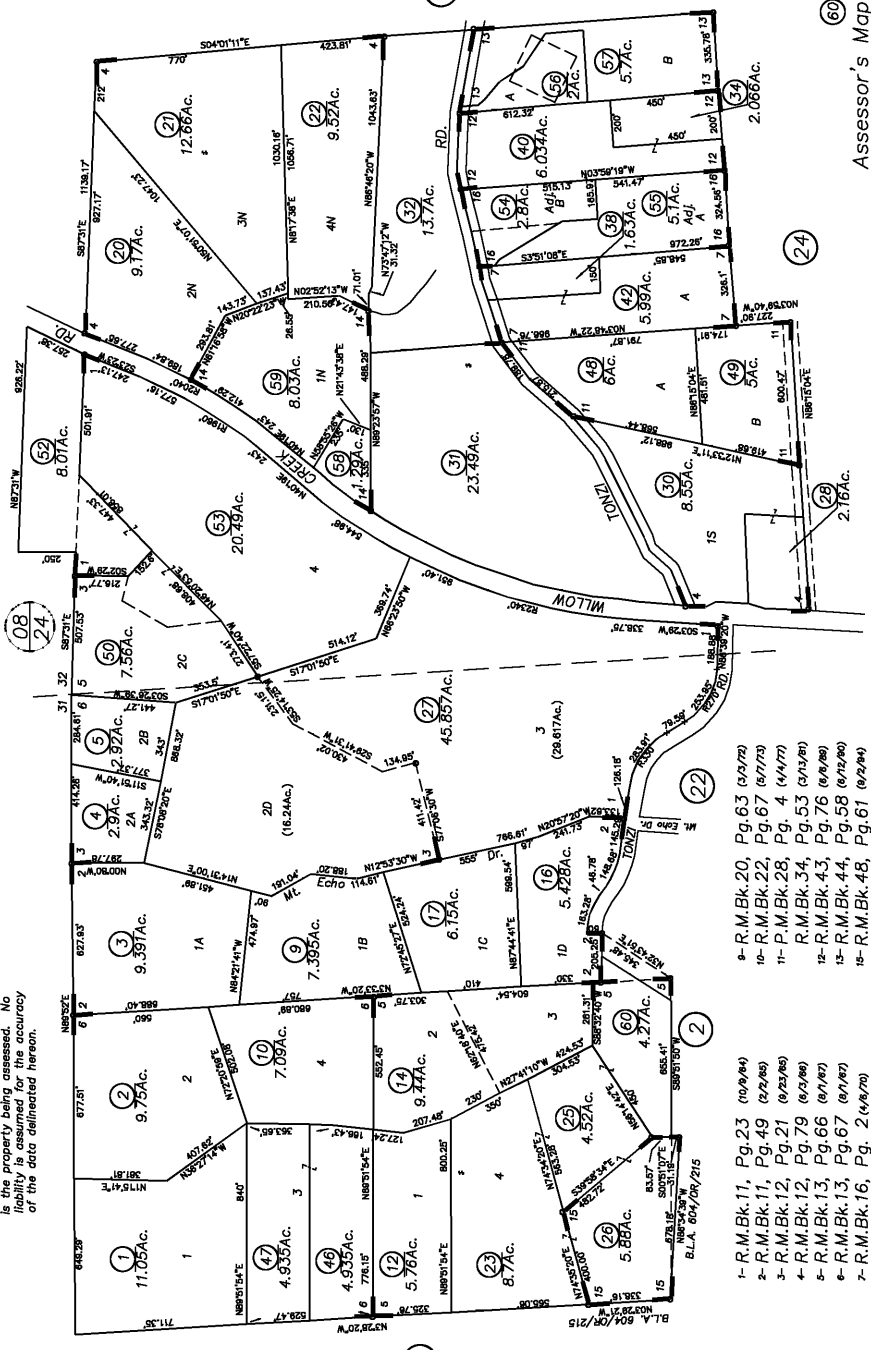


POR. SEC. 5 & 6, T.6N., R.10E., M.D.B. & M.
 POR. SEC. 32, T.7N., R.10E., M.D.B. & M.

IMPORTANT NOTE: This map was prepared for property tax assessment purposes only. It is assumed that the property is being assessed. No liability for inaccuracy of the data delineated hereon.



Map changes become effective 03/22/2002.
 Parcel numbers are subject to change prior to adoption of roll on each July 1.



- 1- R.M.Bk.11, Pg.23 (10/9/78)
- 2- R.M.Bk.11, Pg.49 (2/2/86)
- 3- R.M.Bk.12, Pg.21 (2/2/86)
- 4- R.M.Bk.12, Pg.79 (2/2/86)
- 5- R.M.Bk.13, Pg.66 (2/2/86)
- 6- R.M.Bk.13, Pg.67 (2/2/86)
- 7- R.M.Bk.16, Pg.2 (4/9/79)
- 8- R.M.Bk.19, Pg.78 (12/2/77)
- 14- R.M.Bk.20, Pg.56 (3/9/78)
- 9- R.M.Bk.20, Pg.63 (3/9/78)
- 10- R.M.Bk.22, Pg.67 (5/7/78)
- 11- P.M.Bk.28, Pg.4 (4/4/77)
- 12- R.M.Bk.34, Pg.53 (2/2/80)
- 13- R.M.Bk.43, Pg.76 (2/2/80)
- 15- R.M.Bk.44, Pg.58 (2/2/80)
- 16- R.M.Bk.48, Pg.61 (2/2/80)
- 16- R.M.Bk.41, Pg.16 (1/6/87)

Assessor's Map Bk.11, Pg.23
 County of Amador, Calif.

NOTE- Assessor's Block Numbers Shown in Ellipses.
 Assessor's Parcel Numbers Shown in Circles.