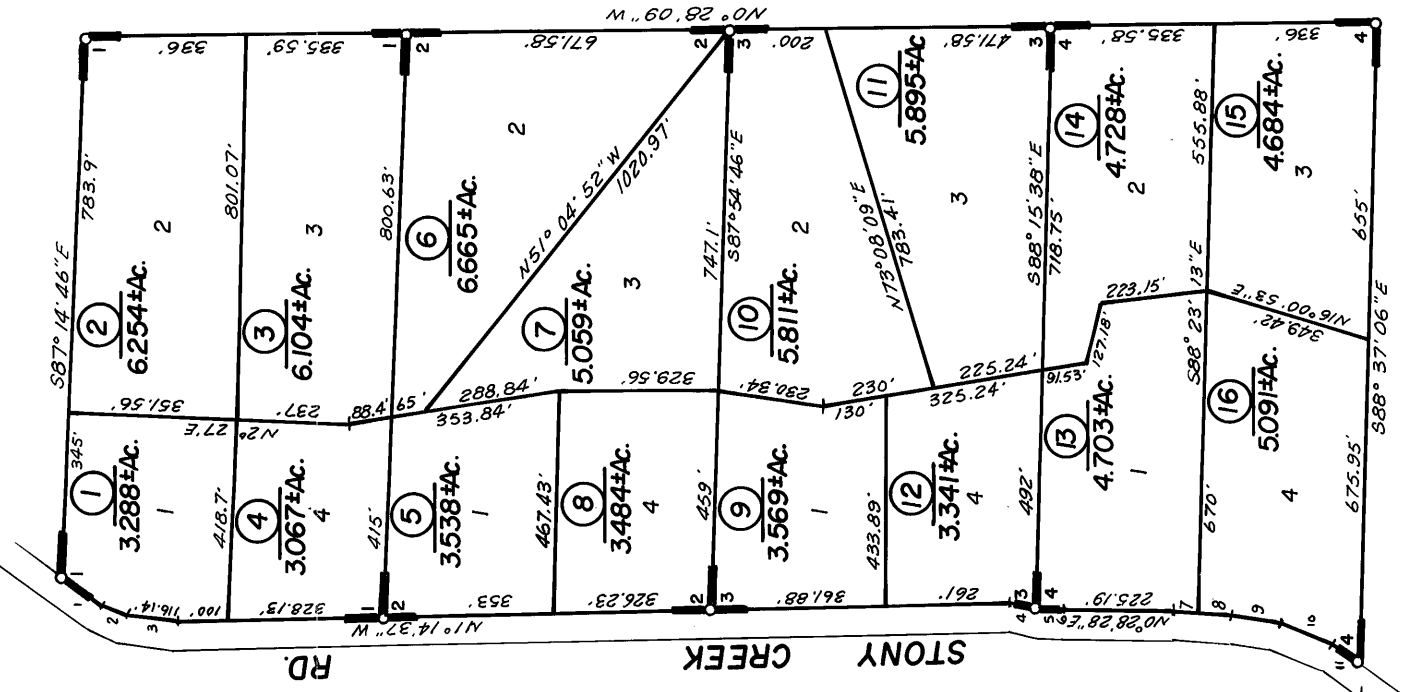


6



1. N36°10'15\"E 102.89'
2. N19°57'40\"E 50.89'
3. N6°15'01\"E 116.14'
4. N12°59'01\"E 57.47'
5. N12°59'01\"E 7.75'
6. N6°12'10\"E 53.58'
7. N3°22'33\"E 51.9'
8. N3°22'33\"E 70'
9. N9°00'25\"E 102.83'
10. N20°17'46\"E 114.94'
11. N35°34'57\"E 72.75'

6

11|12
14|13

9

- 1 - R.M. Bk. 19, Pg. 82
- 2 - R.M. Bk. 19, Pg. 83
- 3 - R.M. Bk. 19, Pg. 84
- 4 - R.M. Bk. 19, Pg. 85