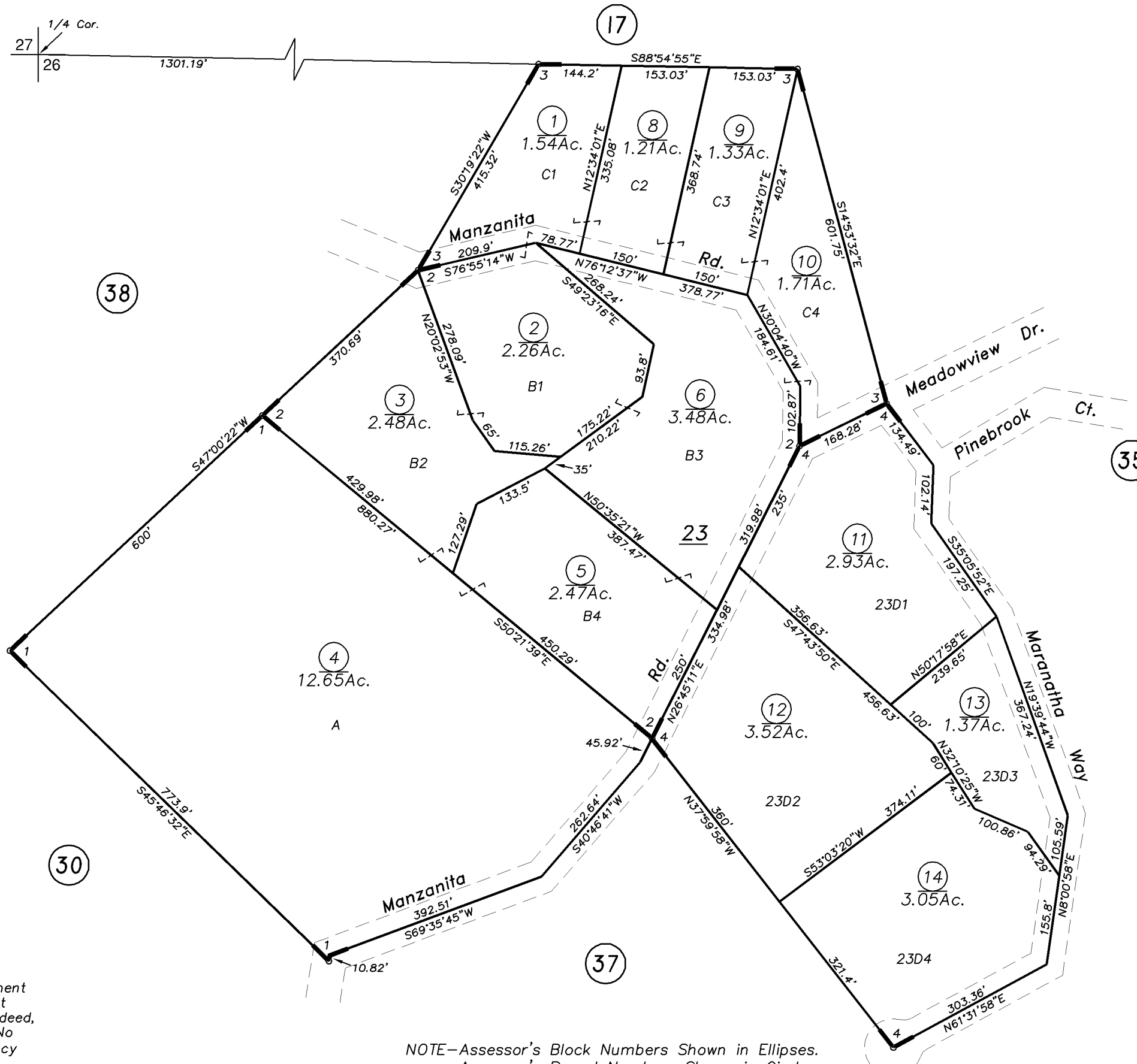


POR. SEC. 26, T.7N, R.IIE., M.D.B.&M.

(Lot 23 Sutter Highlands Unit No. 2)

TAX AREA CODE
52-086

15-34



IMPORTANT NOTE: This map was prepared for property tax assessment purposes only. It is assumed that the property, as described in it's deed, is the property being assessed. No liability is assumed for the accuracy of the data delineated hereon.

NOTE-Assessor's Block Numbers Shown in Ellipses.
Assessor's Parcel Numbers Shown in Circles.

- R.M. Bk.16, Pg.30
- 1- R.M. Bk.17, Pg.24
- 2- R.M. Bk.17, Pg.92
- 3- R.M. Bk.18, Pg.02
- 4- R.M. Bk.18, Pg.14