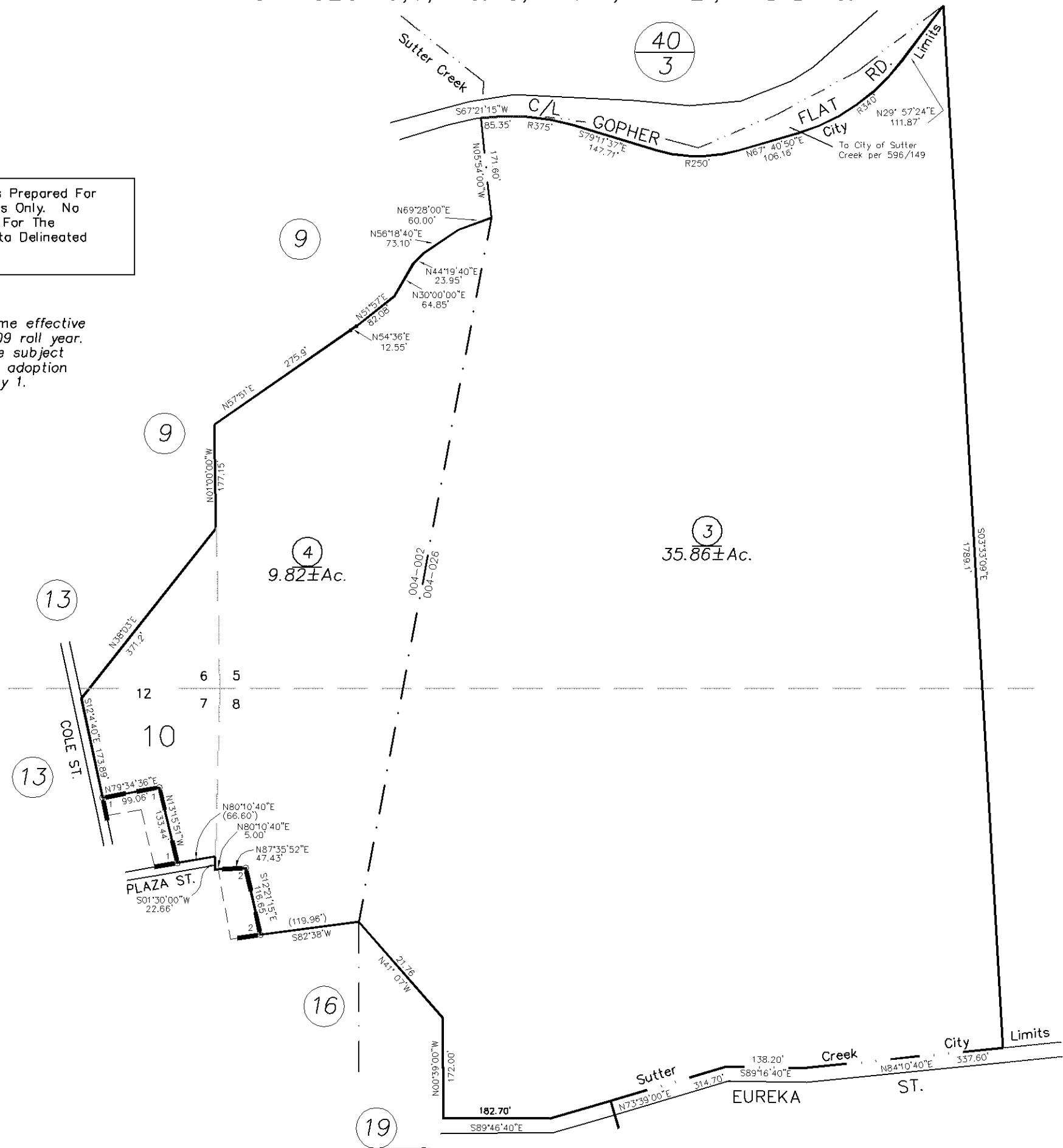
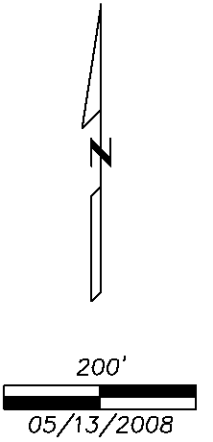


NOTE: This Map Was Prepared For Assessment Purposes Only. No Liability Is Assumed For The Accuracy Of The Data Delineated Hereon.

Map changes become effective with the 2008-2009 roll year. Parcel numbers are subject to change prior to adoption of roll on each July 1.



40/20

40/19

R.M. Bk. 5, Pg. 4 (7/21/53)
R.M. Bk. 44, Pg. 1 (10/10/89)
1-R.M. Bk. 60, Pg. 34 (12/27/07)
2-R.M. Bk. 60, Pg. 35 (12/27/07)

40/3

40/6