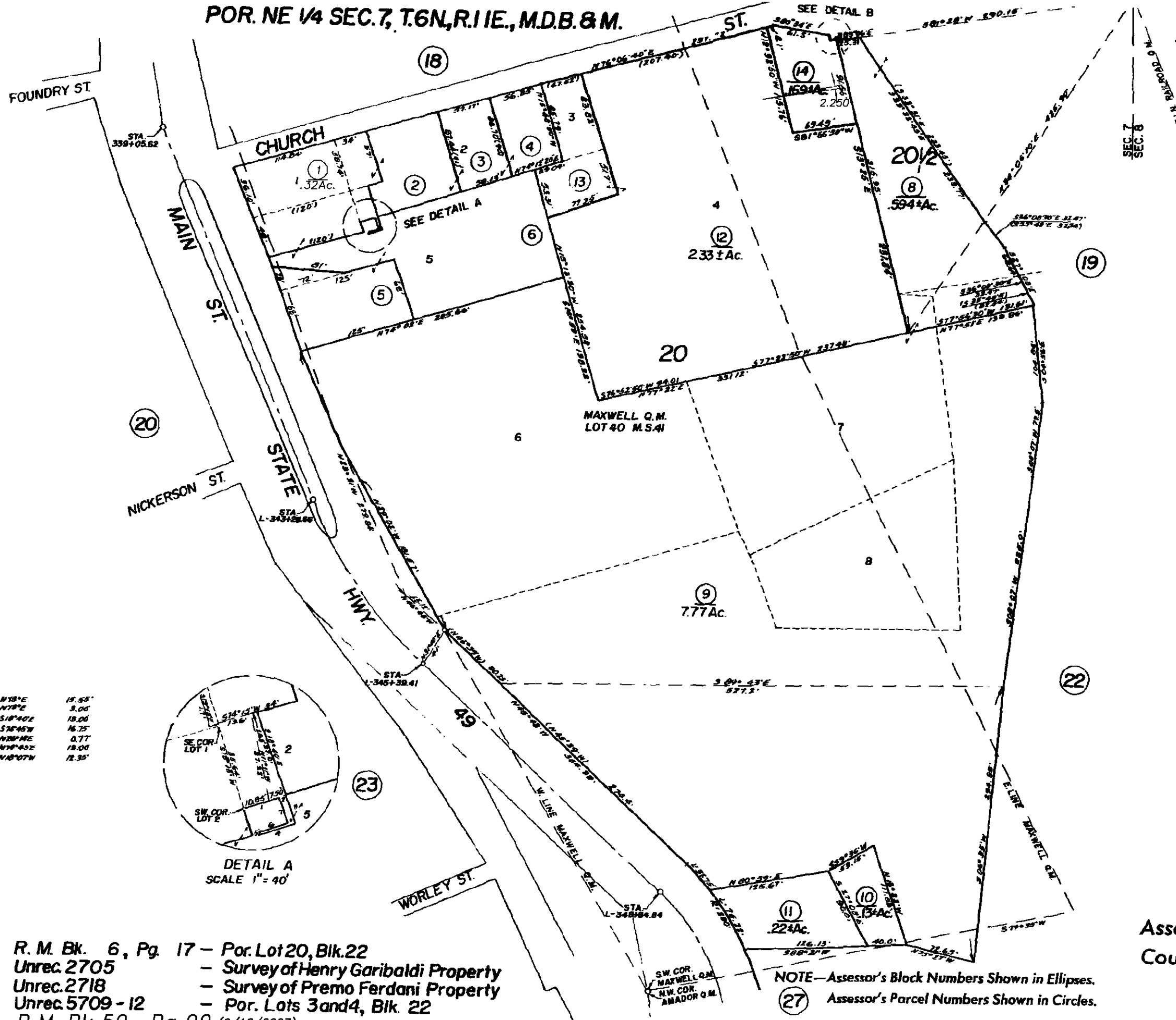


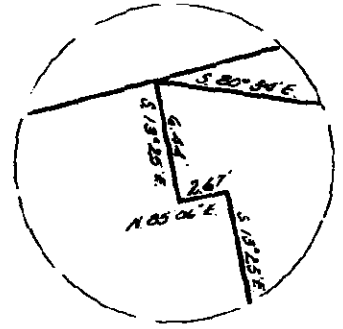
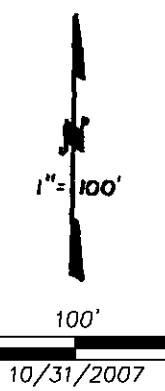
POR. NE 1/4 SEC. 7, T.6N, R.1 E., M.D.B. & M.

Tax Area Code
4-002

18-21

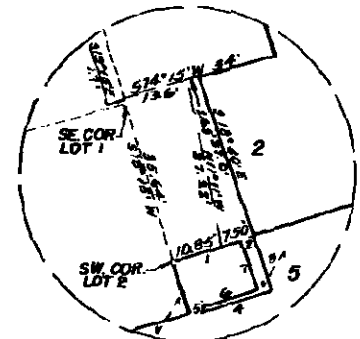


SEC. 7
SEC. 8



DETAIL B
SCALE 1" = 10'

- 1. N13°E 18.55'
- 2. N78°E 3.00'
- 3. S18°40'E 18.00'
- 4. S18°45'W 16.75'
- 5. N20°45'E 0.77'
- 6. N11°45'E 18.00'
- 7. N10°07'W 12.35'



DETAIL A
SCALE 1" = 40'

R. M. Bk. 6, Pg. 17 - Por. Lot 20, Blk. 22
Unrec. 2705 - Survey of Henry Garibaldi Property
Unrec. 2718 - Survey of Premo Ferdani Property
Unrec. 5709 - 12 - Por. Lots 3 and 4, Blk. 22
R.M. Bk. 59, Pg. 99 (9/12/2007)

NOTE - Assessor's Block Numbers Shown in Ellipses.
27 Assessor's Parcel Numbers Shown in Circles.

Assessor's Map Bk. 18, Pg. 21
County of Amador, Calif.