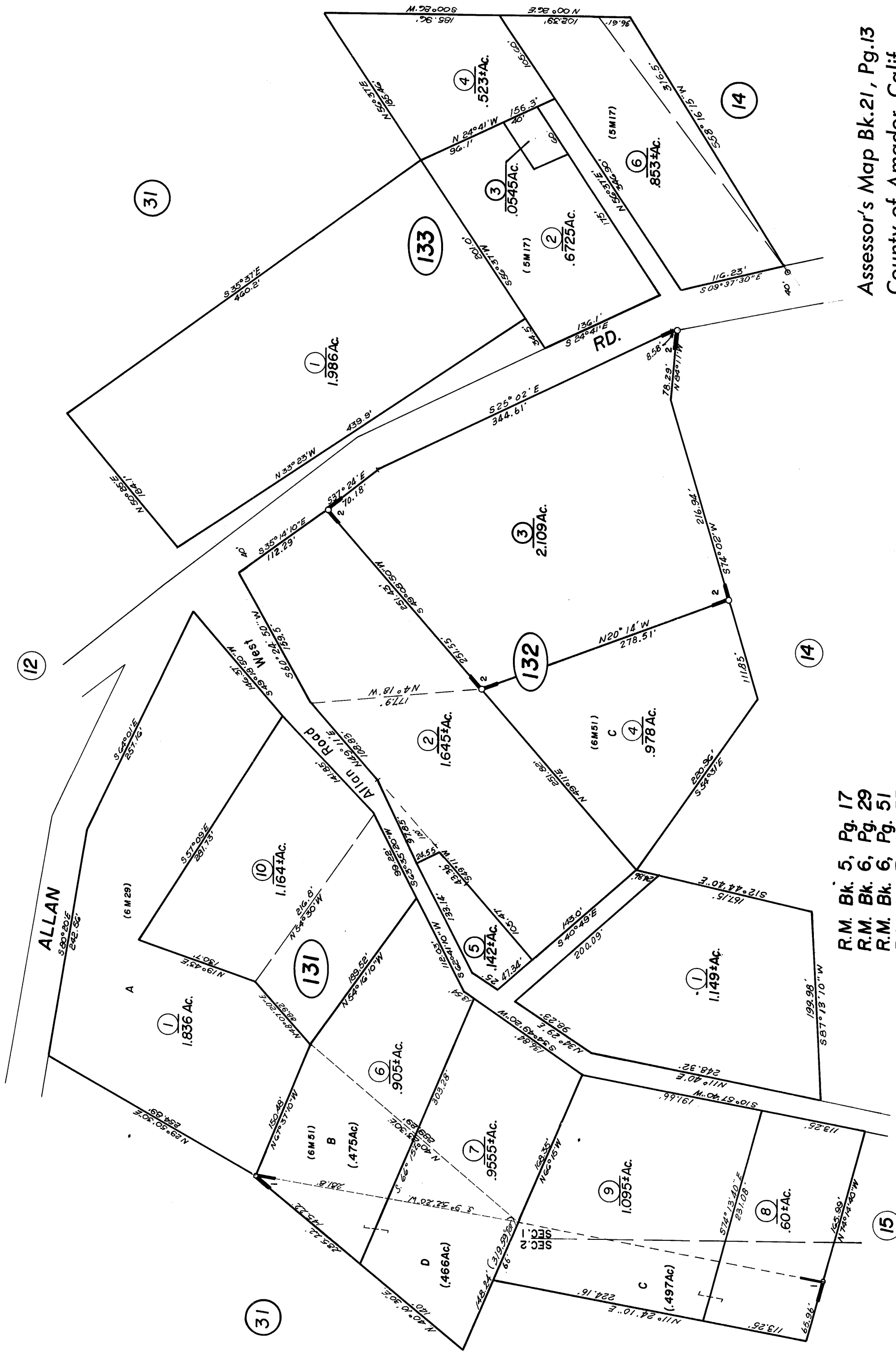
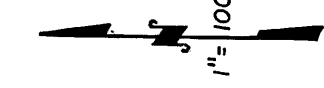


POR. SW 1/4 SEC. 1, T.7N., R.12E., M.D.B. & M.  
 POR. SE 1/4 SEC. 2, T.7N., R.12E., M.D.B. & M.

Tax Area Code

21-13



- R.M. Bk. 5, Pg. 17
- R.M. Bk. 6, Pg. 29
- R.M. Bk. 6, Pg. 51
- 1- R.M. Bk. 7, Pg. 35
- 2- R.M. Bk. 7, Pg. 68

Assessor's Map Bk.21, Pg.13  
 County of Amador, Calif.

NOTE—Assessor's Block Numbers Shown in Ellipses.  
 Assessor's Parcel Numbers Shown in Circles.