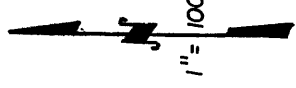


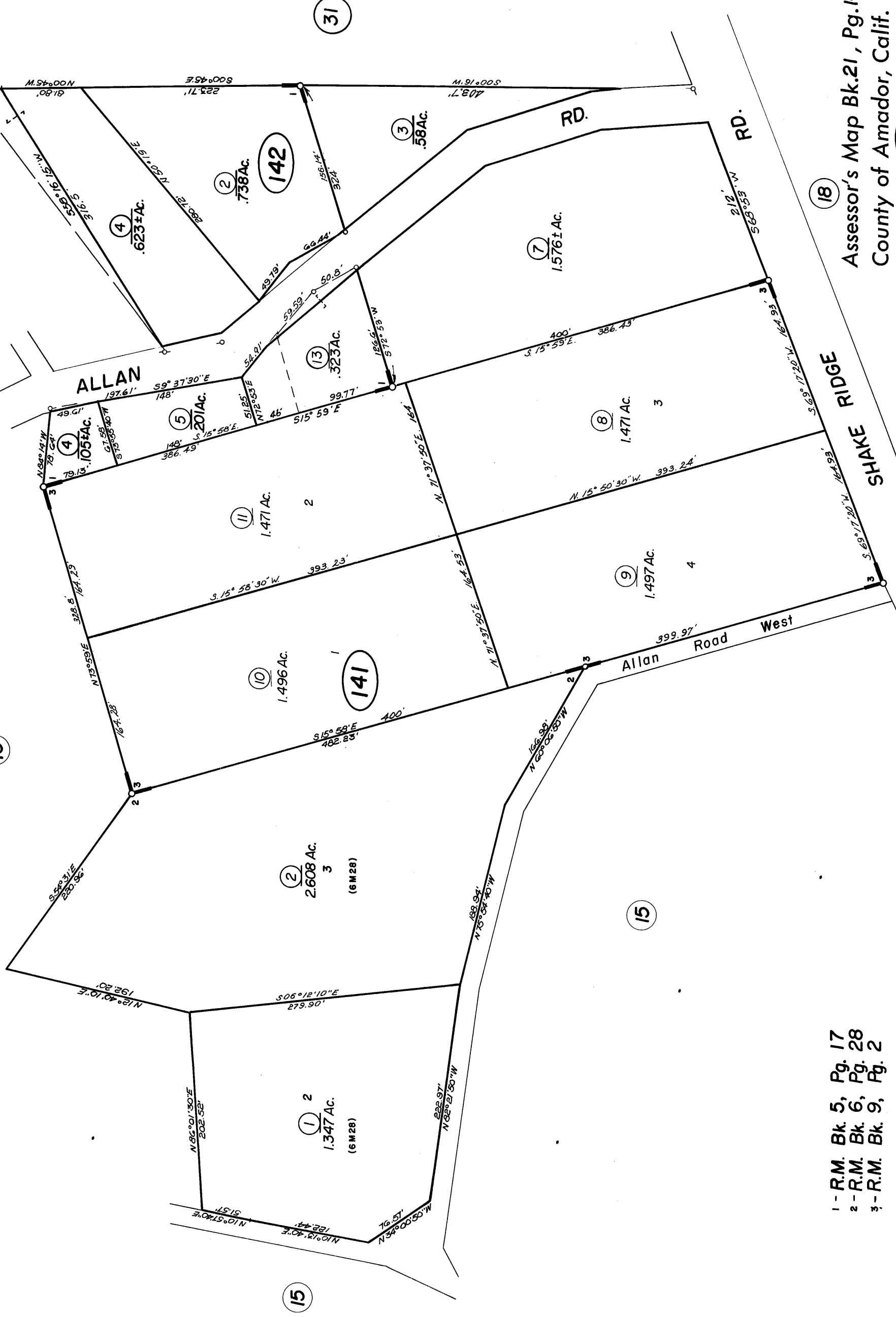
POR. SW 1/4 SEC. 1, T. 7N., R. 12E., M. D. B. & M.

Tax Area Code
52-066

21-14



13



15

15

- 1 - R.M. Bk. 5, Pg. 17
- 2 - R.M. Bk. 6, Pg. 28
- 3 - R.M. Bk. 9, Pg. 2

NOTE— Assessor's Block Numbers Shown in Ellipses.
Assessor's Parcel Numbers Shown in Circles.

18
Assessor's Map Bk. 21, Pg. 14
County of Amador, Calif.