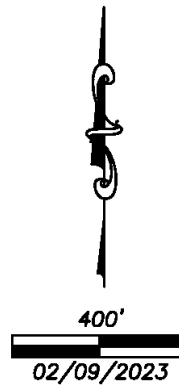
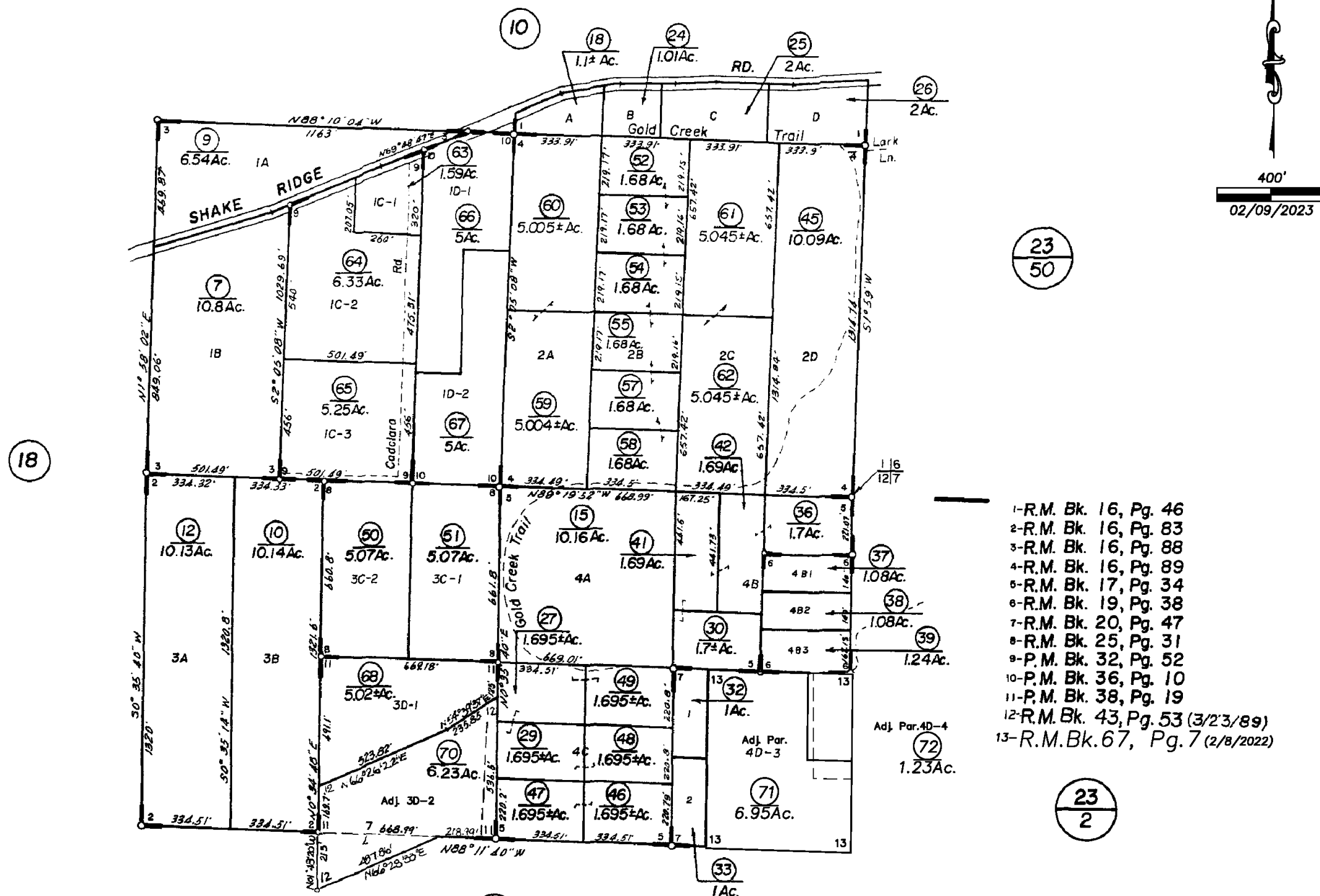


POR. SEC'S 1 & 12, T.7N., R.12E., M.D.B. & M.

21-32

Tax Area Code  
52-066



- 1-R.M. Bk. 16, Pg. 46
- 2-R.M. Bk. 16, Pg. 83
- 3-R.M. Bk. 16, Pg. 88
- 4-R.M. Bk. 16, Pg. 89
- 5-R.M. Bk. 17, Pg. 34
- 6-R.M. Bk. 19, Pg. 38
- 7-R.M. Bk. 20, Pg. 47
- 8-R.M. Bk. 25, Pg. 31
- 9-P.M. Bk. 32, Pg. 52
- 10-P.M. Bk. 36, Pg. 10
- 11-P.M. Bk. 38, Pg. 19
- 12-R.M. Bk. 43, Pg. 53 (3/23/89)
- 13-R.M. Bk. 67, Pg. 7 (2/8/2022)

NOTE—Assessor's Block Numbers Shown in Ellipses.  
Assessor's Parcel Numbers Shown in Circles.

Assessor's Map Bk. 21 , Pg. 32  
County of Amador, Calif.