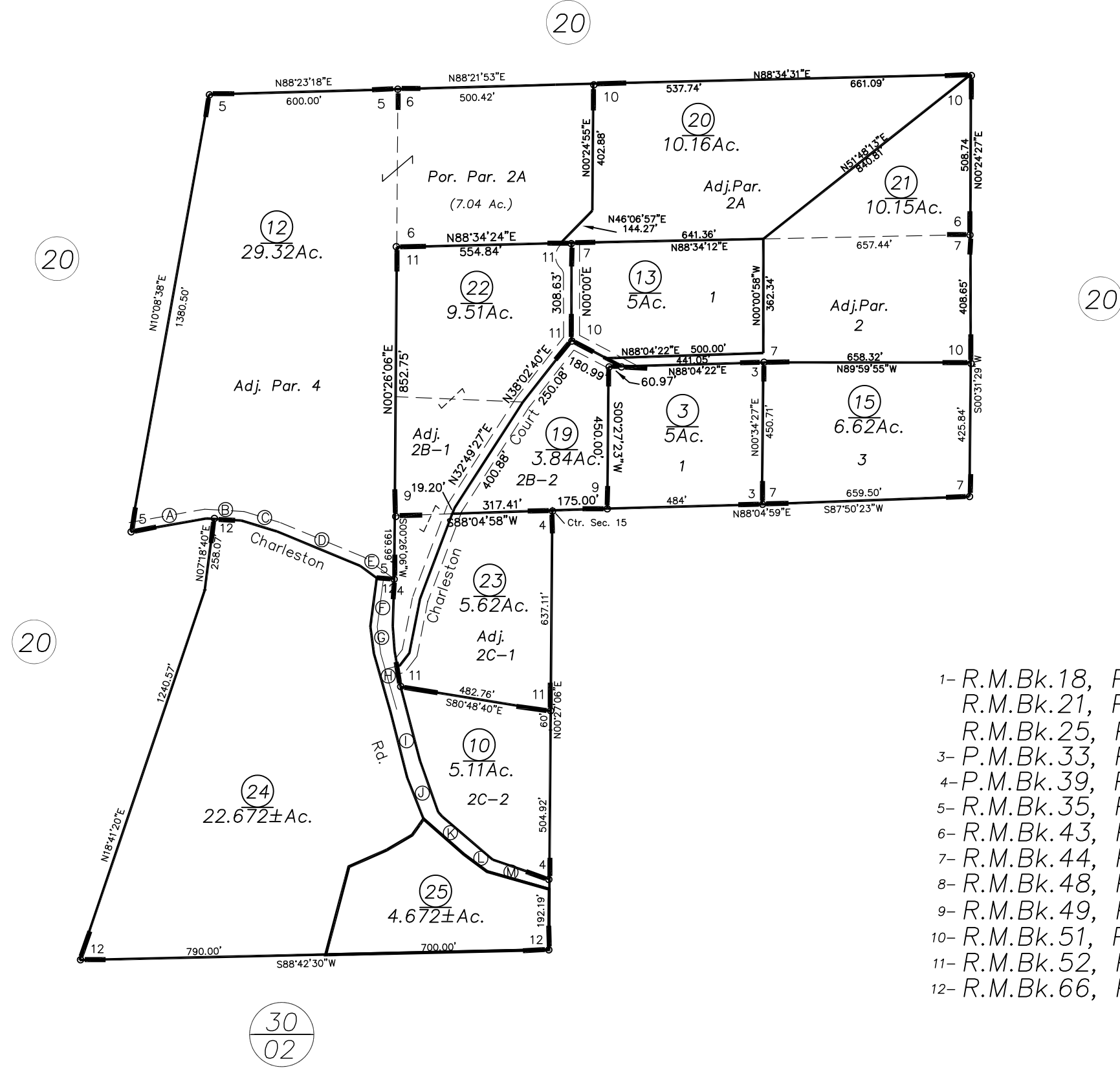


CL of Charleston Rd.

Bearings	Distance
A S79°57'20"W	243.64'
B N86°40'50"W	110.69'
C N73°05'50"W	118.70'
D N67°31'20"W	285.74'
E N53°45'20"W	65.66'
F N28°03'10"W	34.47'
G N07°26'30"E	156.76'
H N07°38'30"W	86.27'
I S15°57'20"E	183.76'
J S14°17'40"E	224.79'
K S48°46'50"E	171.74'
L S53°29'40"E	90.57'
M N72°36'00"W	183.91'



IMPORTANT NOTE: This map was prepared for property tax assessment purposes only. It is assumed that the property, as described in its deed, is the property being assessed. No liability is assumed for the accuracy of the data delineated hereon.

- 1- R.M.Bk.18, Pg.37 (7/22/71)
- R.M.Bk.21, Pg.80 (1/11/72)
- R.M.Bk.25, Pg.45 (3/31/75)
- 3- P.M.Bk.33, Pg.18 (2/20/80)
- 4- P.M.Bk.39, Pg.12 (2/28/85)
- 5- R.M.Bk.35, Pg.85 (5/5/82)
- 6- R.M.Bk.43, Pg.85 (7/14/89)
- 7- R.M.Bk.44, Pg.71 (7/20/90)
- 8- R.M.Bk.48, Pg.22 (3/10/94)
- 9- R.M.Bk.49, Pg.56 (12/15/95)
- 10- R.M.Bk.51, Pg.21 (3/9/98)
- 11- R.M.Bk.52, Pg.44 (5/13/99)
- 12- R.M.Bk.66, Pg.07 (10/21/19)

NOTE-Assessor's Block Numbers Shown in Ellipses.
Assessor's Parcel Numbers Shown in Circles.

Assessor's Map Bk.21, Pg.36
County of Amador, Calif.