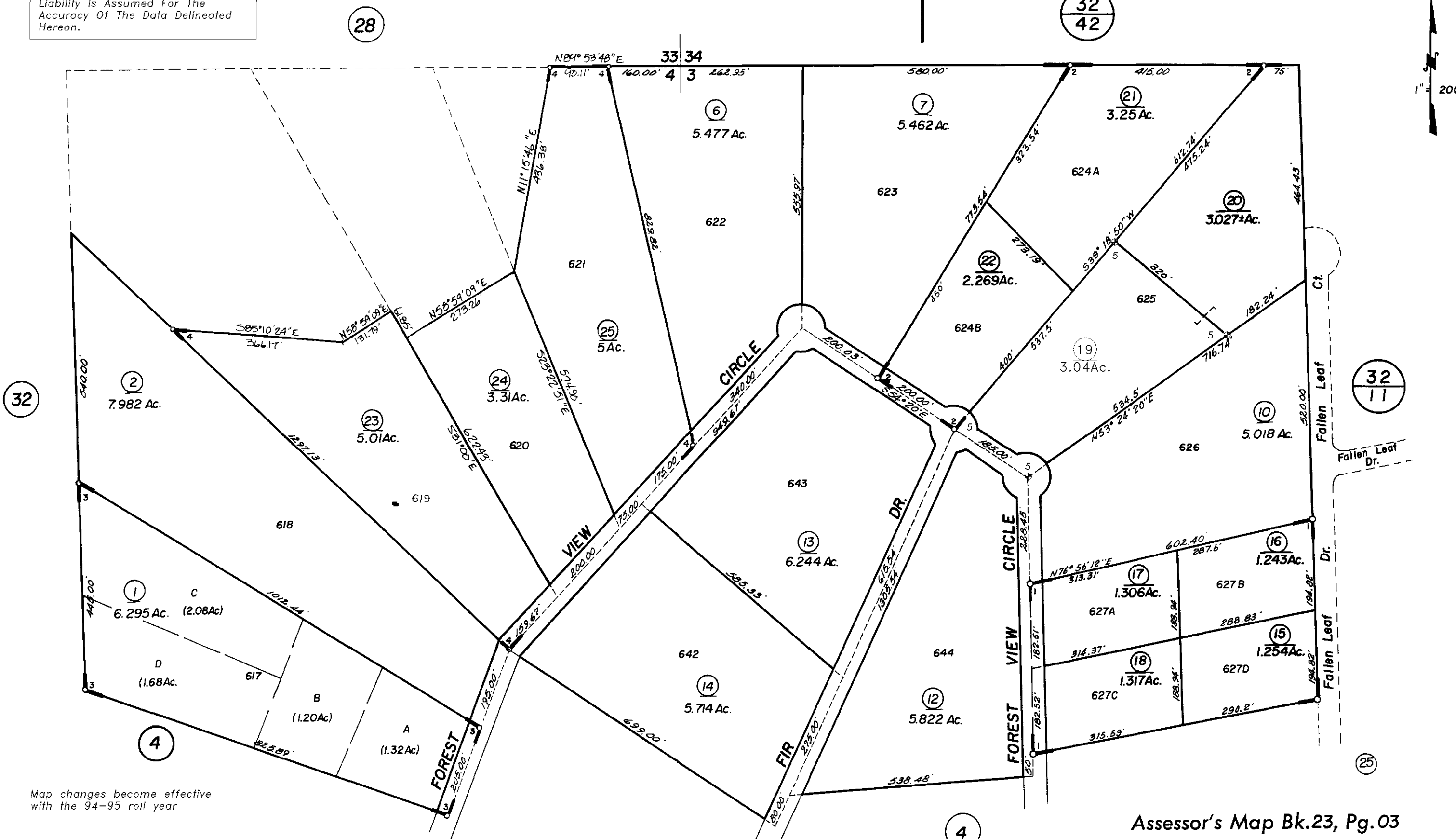


NOTE: This Map Was Prepared For Assessment Purposes Only. No Liability is Assumed For The Accuracy Of The Data Delineated Hereon.

SUBDIVIDED LAND IN N. 1/2 SECS. 3 & 4, T. 7N., R. 13E.

Tax Area Code
52-034

23-03



Map changes become effective with the 94-95 roll year

- R.M. Bk. 7, Pg. 36 - Amador Pines Unit No. 2
- 1- R.M. Bk. 12, Pg. 72
- 2- R.M. Bk. 19, Pg. 99

- 3- R.M. Bk. 20, Pg. 7
- 4- R.M. Bk. 41, Pg. 24
- 5- R.M. Bk. 47, Pg. 67 (7/28/93)

NOTE— Assessor's Block Numbers Shown in Ellipses.
Assessor's Parcel Numbers Shown in Circles.

Assessor's Map Bk. 23, Pg. 03
County of Amador, Calif.