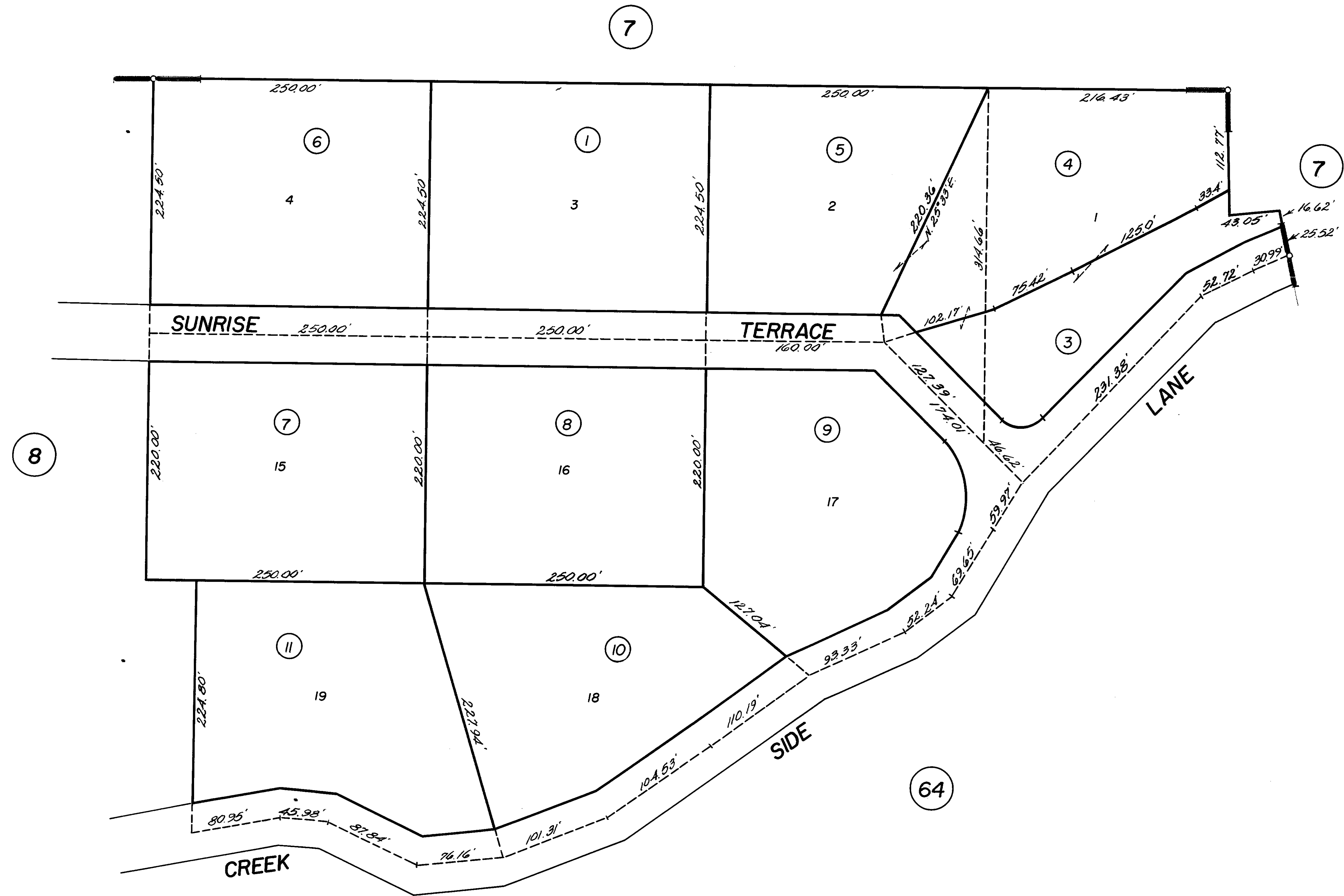


SUBDIVIDED LAND IN SE. 1/4 SEC. 20, T. 7 N., R. 13 E.

Tax Area Code

23-09



R.M. Bk. 7, Pg. 47 — Pioneer Glen Subdivision No. 1

Assessor's Map Bk. 23, Pg. 09
County of Amador, Calif.

NOTE—Assessor's Block Numbers Shown in Ellipses.
Assessor's Parcel Numbers Shown in Circles.