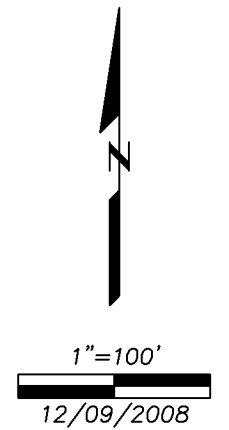


SUBDIVIDED LAND IN SW 1/4 SEC.20, T.7N., R13E.

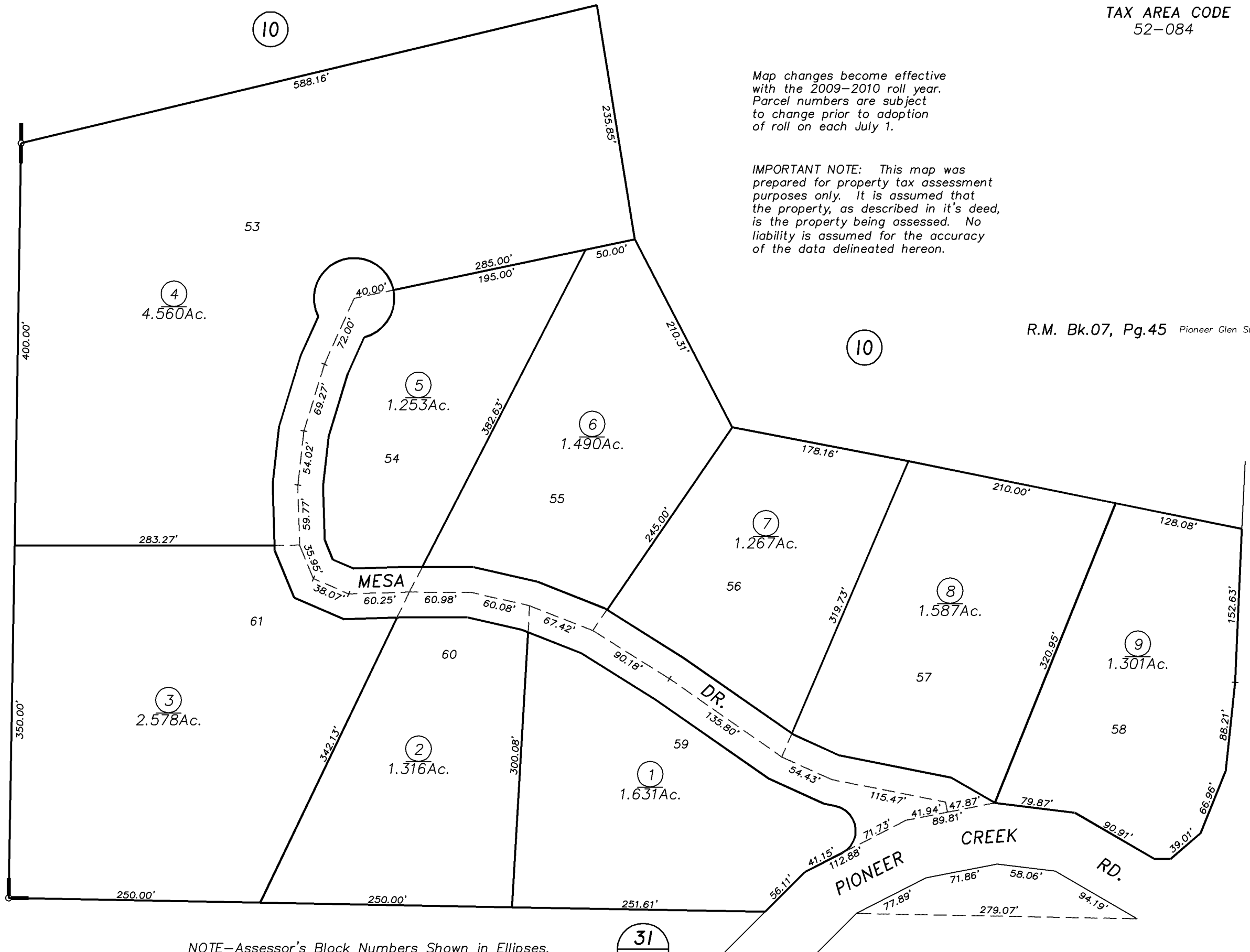
TAX AREA CODE
52-084

Map changes become effective
with the 2009-2010 roll year.
Parcel numbers are subject
to change prior to adoption
of roll on each July 1.

IMPORTANT NOTE: This map was
prepared for property tax assessment
purposes only. It is assumed that
the property, as described in it's deed,
is the property being assessed. No
liability is assumed for the accuracy
of the data delineated hereon.



R.M. Bk.07, Pg.45 Pioneer Glen Sub'n. No.1



NOTE-Assessor's Block Numbers Shown in Ellipses.
Assessor's Parcel Numbers Shown in Circles.