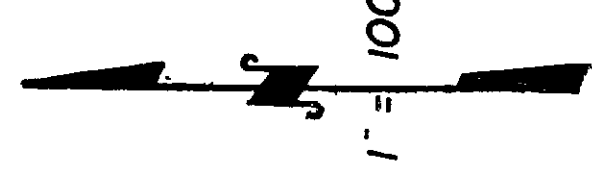
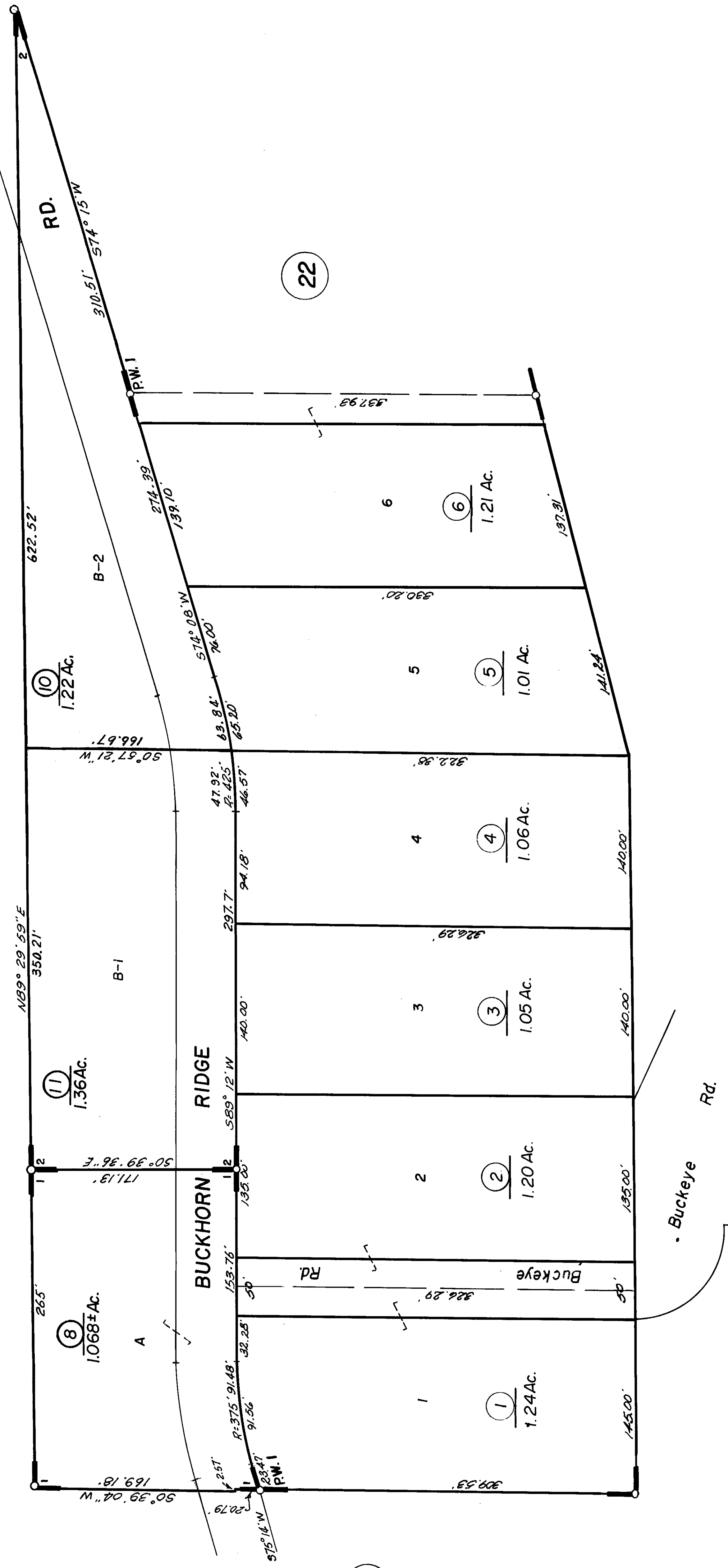


SUB. LAND & POR. of SW 1/4 SEC. 21, T. 7 N., R. 13 E.



7



7

42

11

R. M. Bk. 8, Pg. 8
 R. M. Bk. 16, Pg. 10
 R. M. Bk. 20, Pg. 36

Pioneer Woods Sub. No. 1

Assessor's Map Bk. 23, Pg. 21
 County of Amador, Calif.

NOTE—Assessor's Block Numbers Shown in Ellipses.
 Assessor's Parcel Numbers Shown in Circles.