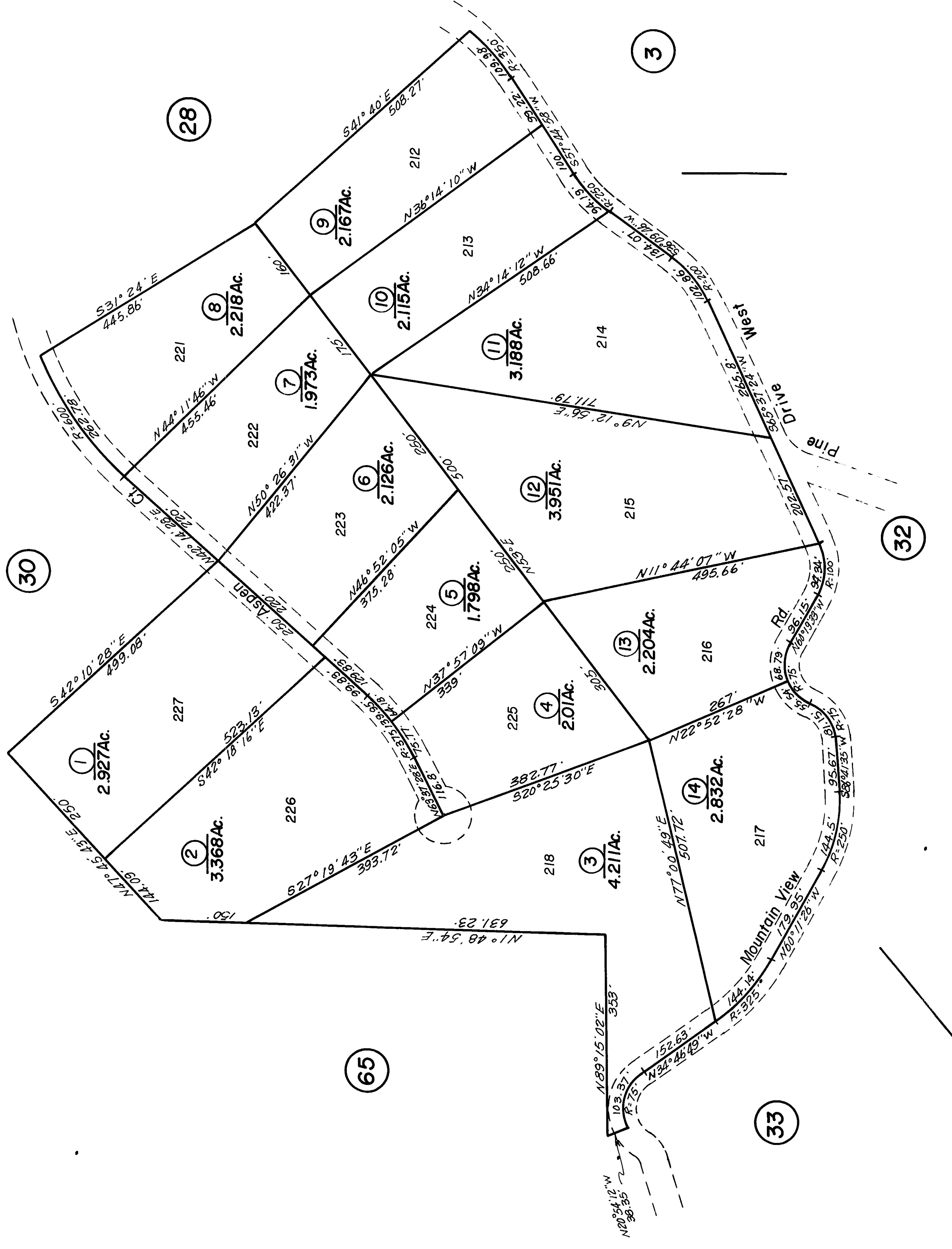


POR. SEC. 4, T. 7N., R. 13E., M.D.B. & M.
POR. SEC. 33, T. 8N., R. 13E., M.D.B. & M.

23-31



R.M. Bk. I, Sub. Pg. 68 Amador Pines Unit No. 5

(14)

Assessor's Map Bk. 23, Pg. 31
County of Amador, Calif.