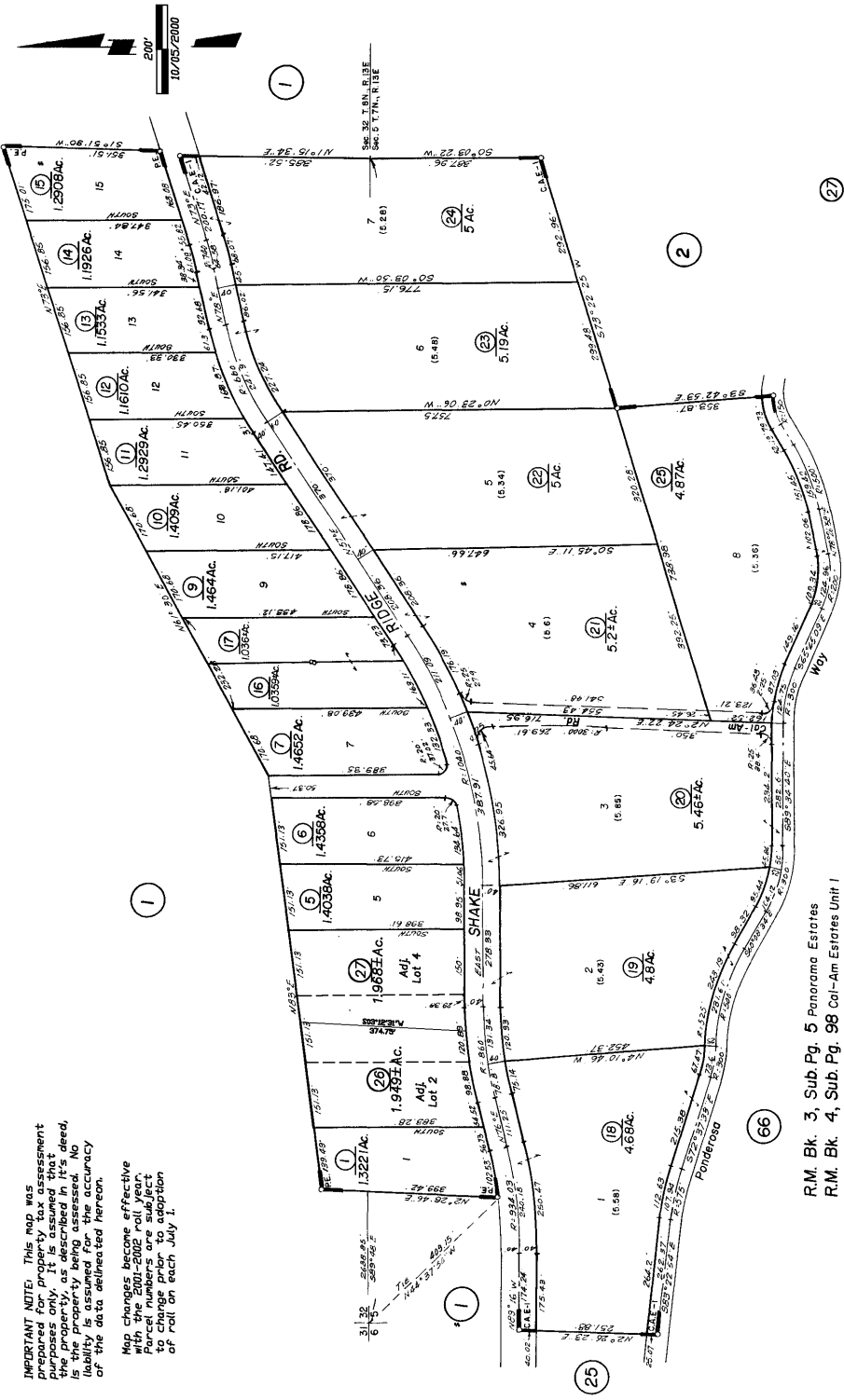


**IMPORTANT NOTE:** This map was prepared for priority tax assessment purposes only. It is assumed that the property, as described in it's deed, is the property being assessed. No liability is assumed for the accuracy or the data delineated hereon.

Map changes become effective with the 2001-2002 roll year. Parcel numbers are subject to change prior to adoption or roll on each July 1.



R.M. Bk. 3, Sub. Pg. 5 Panorama Estates  
R.M. Bk. 4, Sub. Pg. 98 Col-Am Estates Unit 1