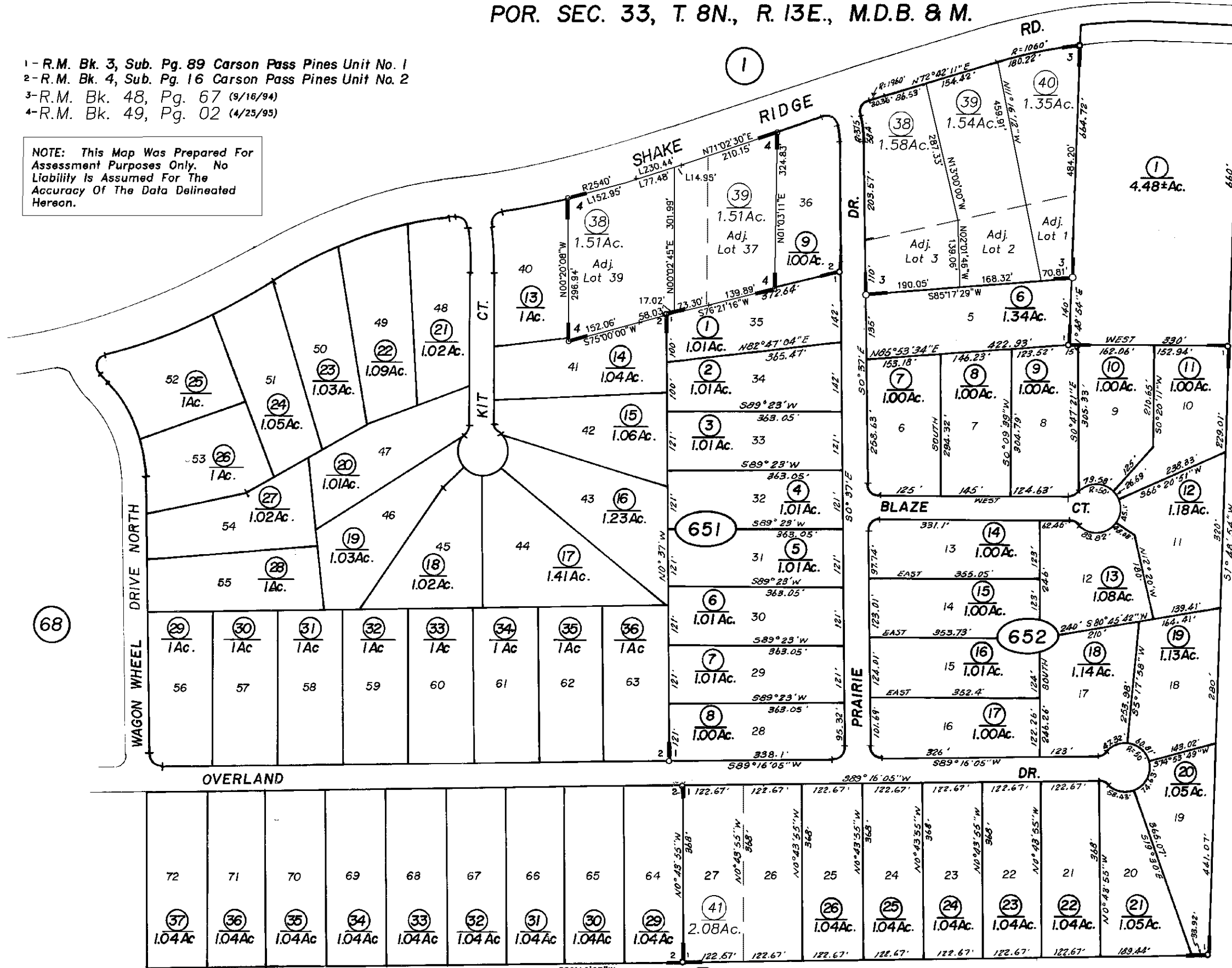
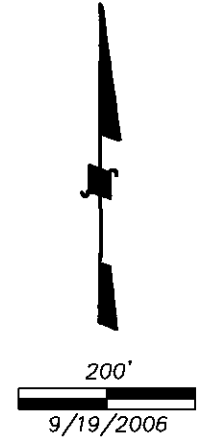


POR. SEC. 33, T. 8N., R. 13E., M.D.B. & M.

- 1-R.M. Bk. 3, Sub. Pg. 89 Carson Pass Pines Unit No. 1
- 2-R.M. Bk. 4, Sub. Pg. 16 Carson Pass Pines Unit No. 2
- 3-R.M. Bk. 48, Pg. 67 (9/16/94)
- 4-R.M. Bk. 49, Pg. 02 (4/25/95)

NOTE: This Map Was Prepared For Assessment Purposes Only. No Liability Is Assumed For The Accuracy Of The Data Delineated Hereon.

Tax Area Code  
52-088



NOTE: All drives and courts deeded to the Carson Pass Pines Maintenance Assoc. Inc. per 387 or 676-80.

Map changes become effective with the 2007-2008 roll year. Parcel numbers are subject to change prior to adoption of roll on each July 1.

651 39  
652 41

31

33

NOTE - Assessor's Block Numbers Shown in Ellipses.  
Assessor's Parcel Numbers Shown in Circles.

Assessor's Map Bk.23, Pg. 65  
County of Amador, Calif.