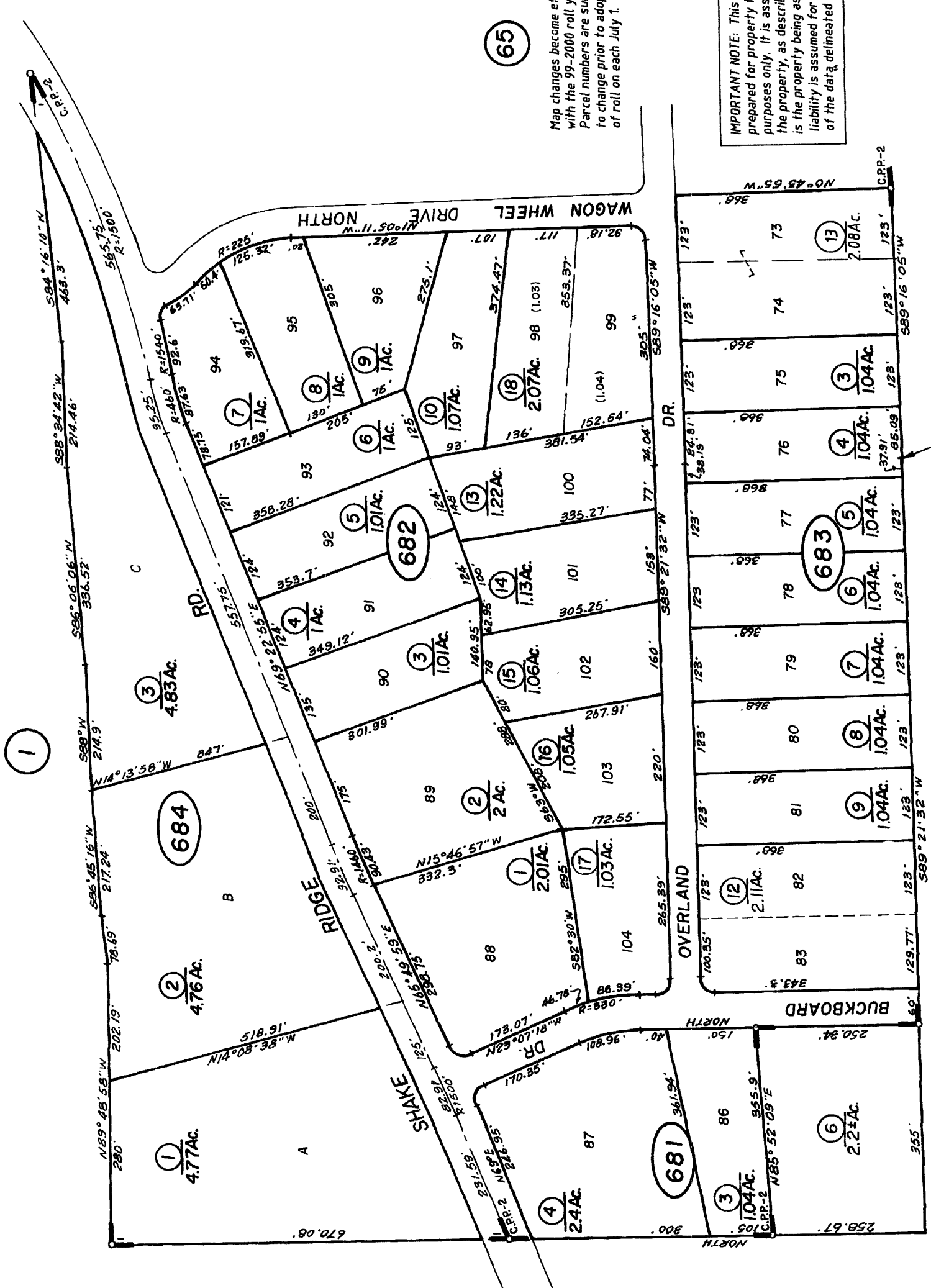
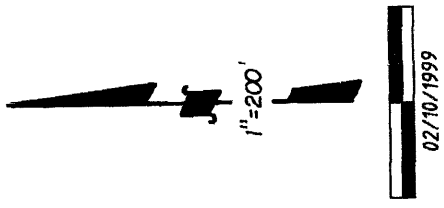


Tax Area Code
52-066

POR. SEC'S 32 & 33, T. 8N., R. 13E., M.D.B. & M.



65

Map changes become effective with the 99-2000 roll year. Parcel numbers are subject to change prior to adoption of roll on each July 1.

IMPORTANT NOTE: This map was prepared for property tax assessment purposes only. It is assumed that the property, as described in it's deed, is the property being assessed. No liability is assumed for the accuracy of the data delineated hereon.

33

NOTE: All drives and courts deeded to the Carson Pass Maintenance Assoc. Inc. per 387 or 676-80

Buckboard Drive accepted by County of Amador per 93-001678.

R.M. Bk. 4, Sub. Pg. 16 - Carson Pass Pines Unit No. 2

- R.M. Bk. 19, Pg. 49

NOTE—Assessor's Block Numbers Shown in Ellipses.
Assessor's Parcel Numbers Shown in Circles.

Assessor's Map Bk. 23 , Pg. 68
County of Amador, Calif.