

POR. SE 1/4, SEC. 6, T. 7N., R. 13E., M.D.B. & M.

23-72

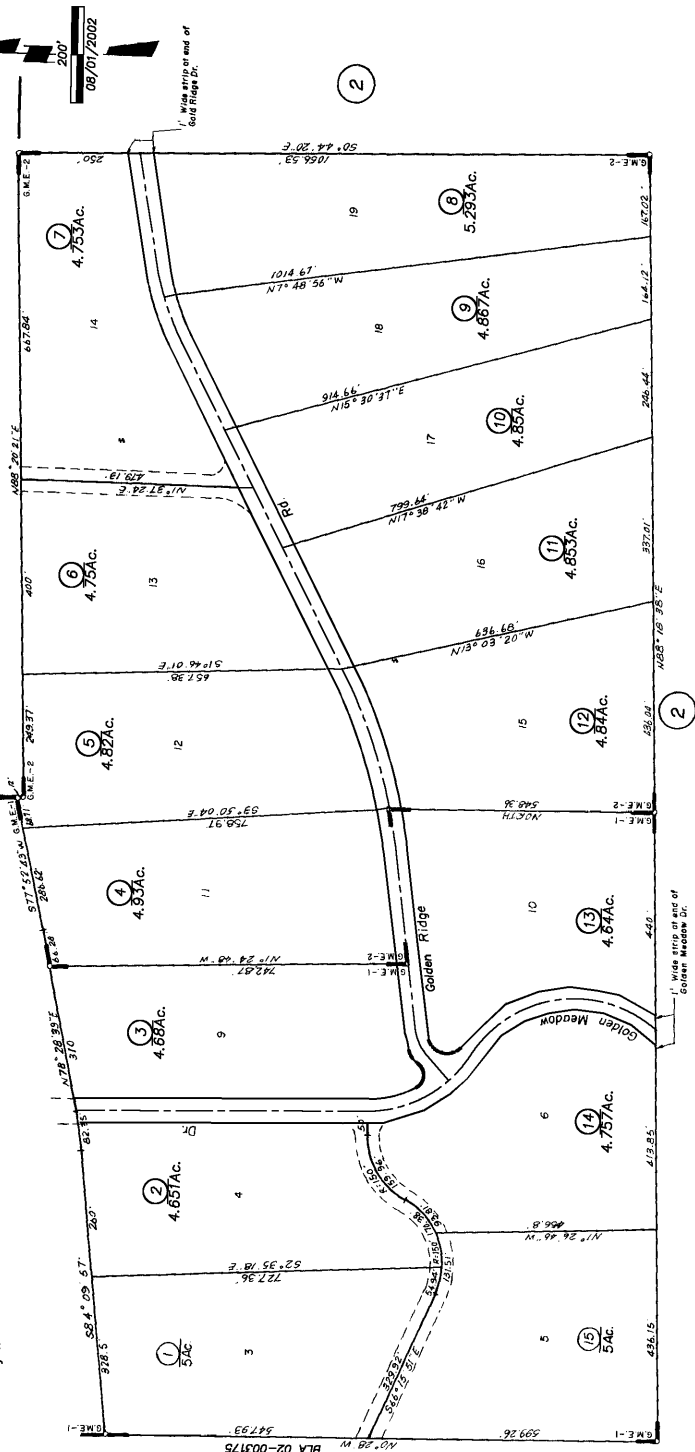
IMPORTANT NOTE: This map was prepared for recordation purposes only. It is assumed that the property, as described in it's deed, is the property being assessed. No liability is assumed for the accuracy of the data delineated herein.

Map changes become effective August 1, 2007.  
Parcel numbers are subject to change prior to adoption of roll on each July 1.

(66)

(43)

(50)



R.M. Bk. 5, Sub. Pg. 8 Golden Meadow Estates Unit 1  
R.M. Bk. 5, Sub. Pg. 10 Golden Meadow Estates Unit 2

(15)