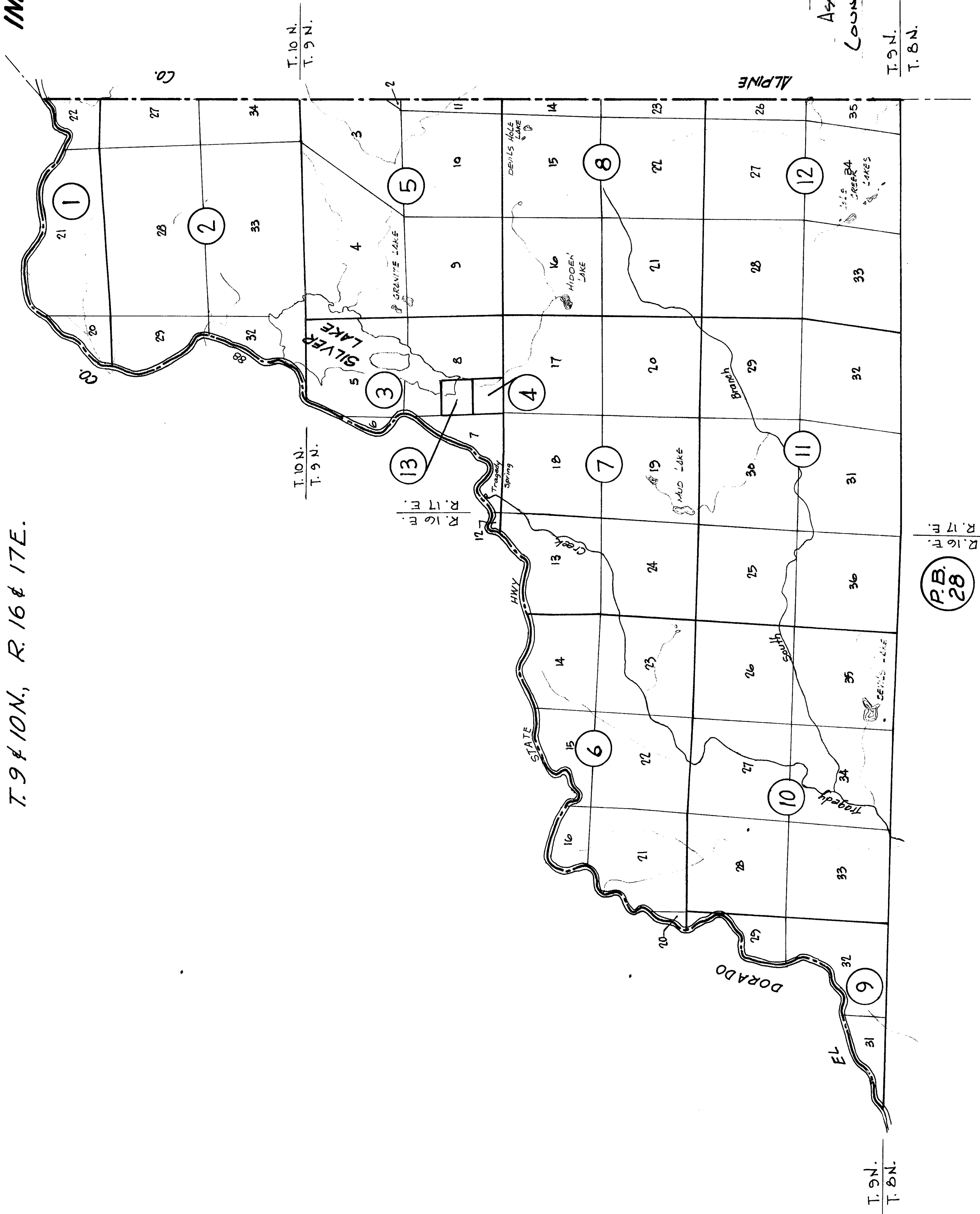
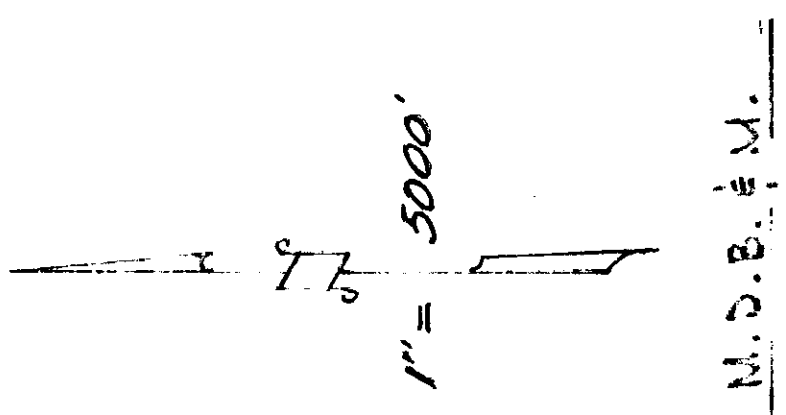


T. 9 & 10 N., R. 16 & 17 E.

INDEX BOOK 26



INDEX  
BOOK 26  
Assessor's Map  
COUNTY OF AMADOR CALIF.

R. 17 E.  
R. 16 E.  
P.B. 28

T. 9 N.  
T. 8 N.

T. 10 N.  
T. 9 N.

ALPINE

DORADO

SILVER LAKE

STATE HWY

EL

T. 9 N.  
T. 8 N.