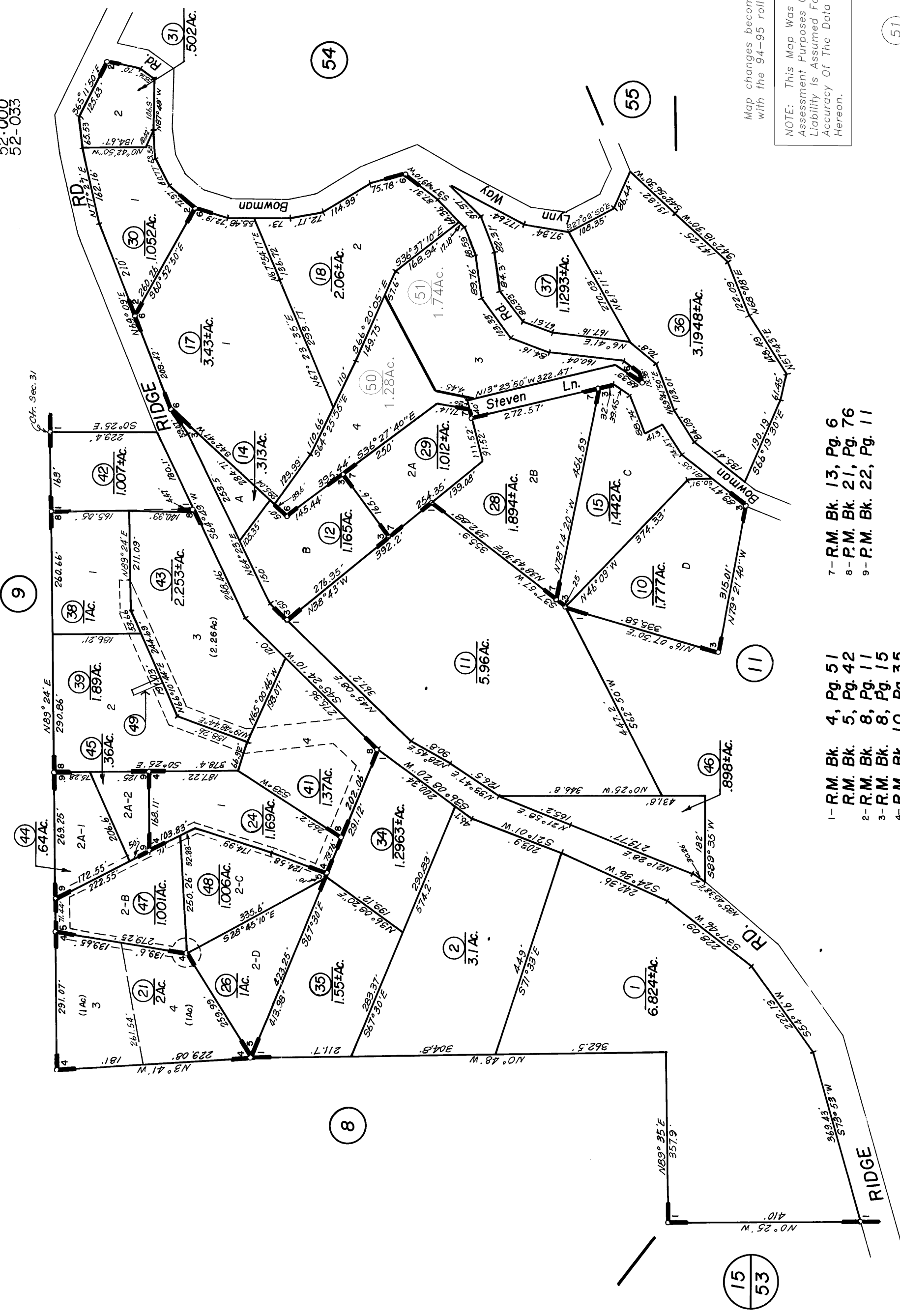


Tax Area Code
52-000
52-033



Map changes become effective with the 94-95 roll year

NOTE: This Map Was Prepared For Assessment Purposes Only. No Liability Is Assumed For The Accuracy Of The Data Delineated Hereon.

- 7- R.M. Bk. 13, Pg. 6
- 8- P.M. Bk. 21, Pg. 76
- 9- P.M. Bk. 22, Pg. 11

- 1- R.M. Bk. 4, Pg. 51
- 2- R.M. Bk. 5, Pg. 42
- 3- R.M. Bk. 8, Pg. 11
- 4- R.M. Bk. 8, Pg. 15
- 5- R.M. Bk. 10, Pg. 35
- 6- R.M. Bk. 10, Pg. 46
- 11- R.M. Bk. 11, Pg. 33

51