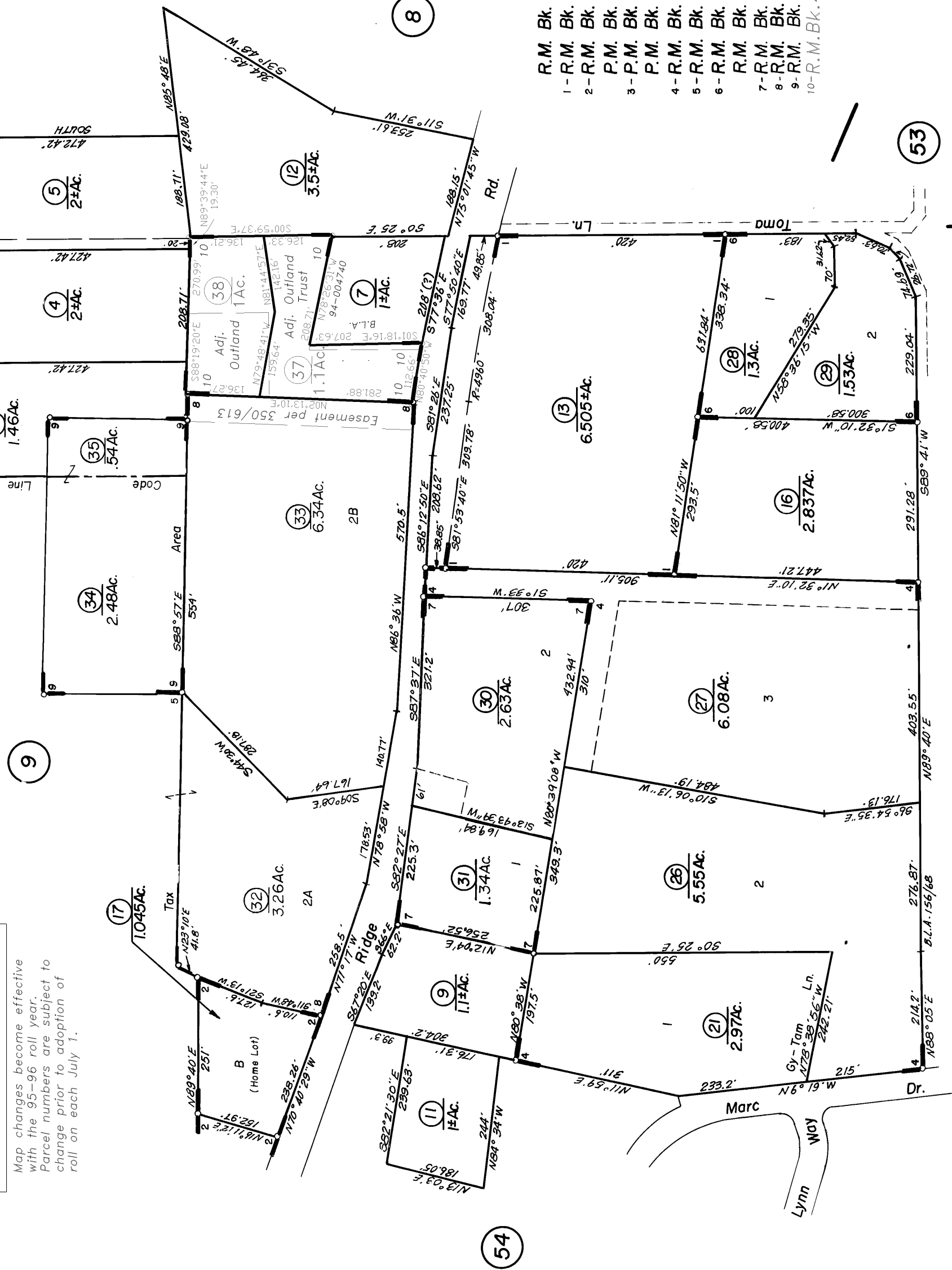


Tax Area Code
52-000
52-033

NOTE: This Map Was Prepared For Assessment Purposes Only. No Liability Is Assumed For The Accuracy Of The Data Delineated Hereon.

Map changes become effective with the 95-96 roll year. Parcel numbers are subject to change prior to adoption of roll on each July 1.



- R.M. Bk. 4, Pg. 51
- 1-R.M. Bk. 11, Pg. 91
- 2-R.M. Bk. 15, Pg. 89
- 3-P.M. Bk. 20, Pg. 40
- 4-R.M. Bk. 22, Pg. 2
- 5-R.M. Bk. 22, Pg. 6
- 6-R.M. Bk. 24, Pg. 28
- 7-R.M. Bk. 28, Pg. 3 B.L. Adj.
- 8-R.M. Bk. 31, Pg. 71 B.L. Adj.
- 9-R.M. Bk. 34, Pg. 87
- 10-R.M. Bk. 39, Pg. 43 B.L. Adj.
- 11-R.M. Bk. 41, Pg. 5
- 12-R.M. Bk. 43, Pg. 45 B.L. Adj. (2/24/89)
- 13-R.M. Bk. 48, Pg. 44 (6/22/94)