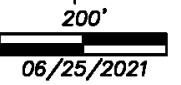


IMPORTANT NOTE: This map was prepared for property tax assessment purposes only. It is assumed that the property, as described in it's deed, is the property being assessed. No liability is assumed for the accuracy of the data delineated hereon.

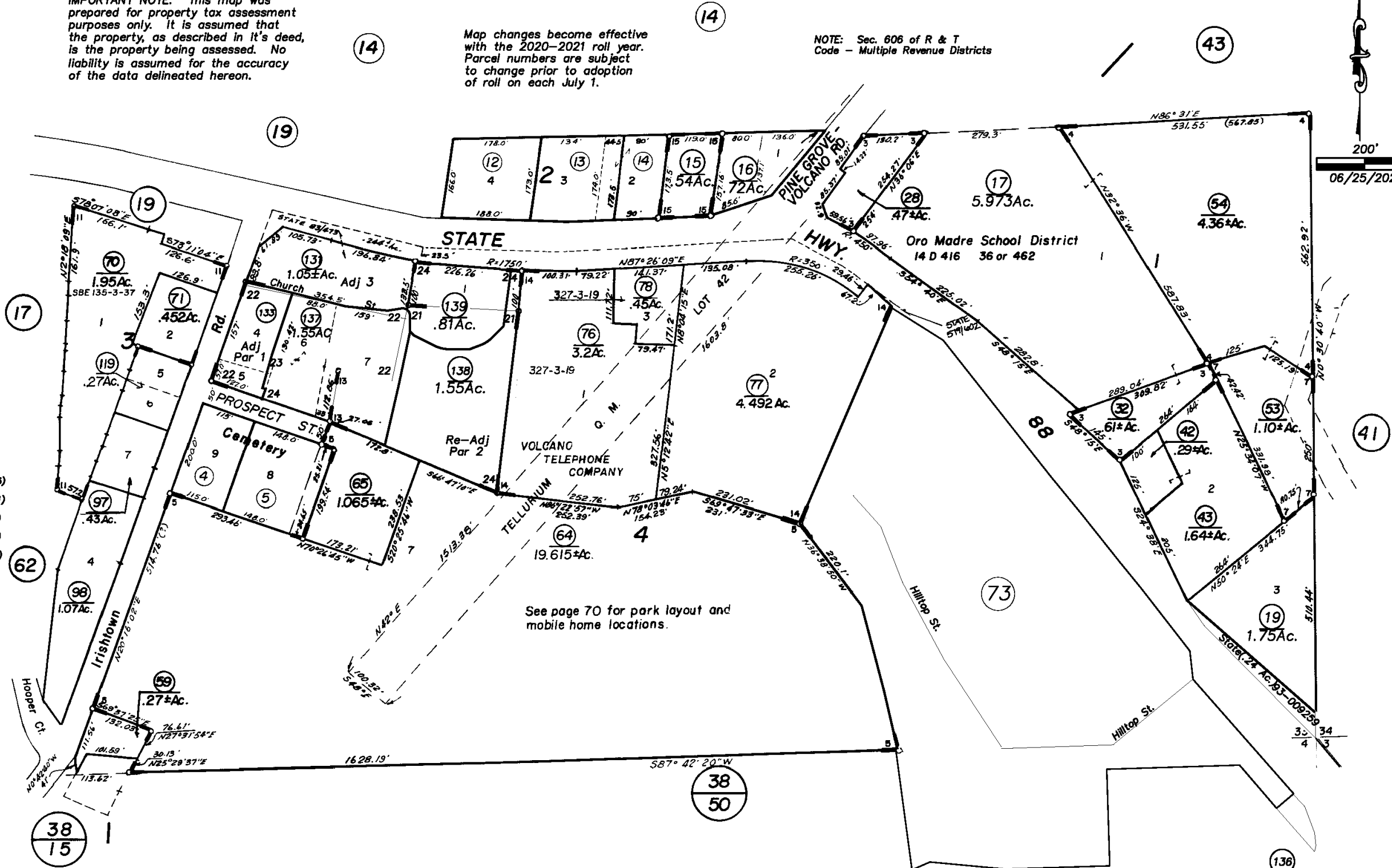
Map changes become effective with the 2020-2021 roll year. Parcel numbers are subject to change prior to adoption of roll on each July 1.

NOTE: Sec. 606 of R & T Code - Multiple Revenue Districts



06/25/2021

- Pine Grove Townsite
- 3 - R.M. Bk. 8, Pg. 70
- 4 - R.M. Bk. 9, Pg. 39
- 5 - R.M. Bk. 11, Pg. 31
- 7 - R.M. Bk. 21, Pg. 23
- R.M. Bk. 31, Pg. 99
- 11 - R.M. Bk. 27, Pg. 52
- 12 - P.M. Bk. 28, Pg. 36
- 13 - P.M. Bk. 28, Pg. 64
- 14 - P.M. Bk. 31, Pg. 39
- R.M. Bk. 38, Pg. 72
- R.M. Bk. 38, Pg. 37 B.L. Adj
- R.M. Bk. 34, Pg. 81 B.L. Adj
- R.M. Bk. 34, Pg. 89
- R.M. Bk. 35, Pg. 22 B.L. Adj.
- 15 - R.M. Bk. 39, Pg. 77
- R.M. Bk. 49, Pg. 43 (11/07/95)
- 21 - R.M. Bk. 53, Pg. 88 (03/29/01)
- 22 - R.M. Bk. 65, Pg. 84 (12/11/18)
- 23 - R.M. Bk. 65, Pg. 90 (01/31/19)
- 24 - R.M. Bk. 66, Pg. 52 (11/09/20)



See page 70 for park layout and mobile home locations.