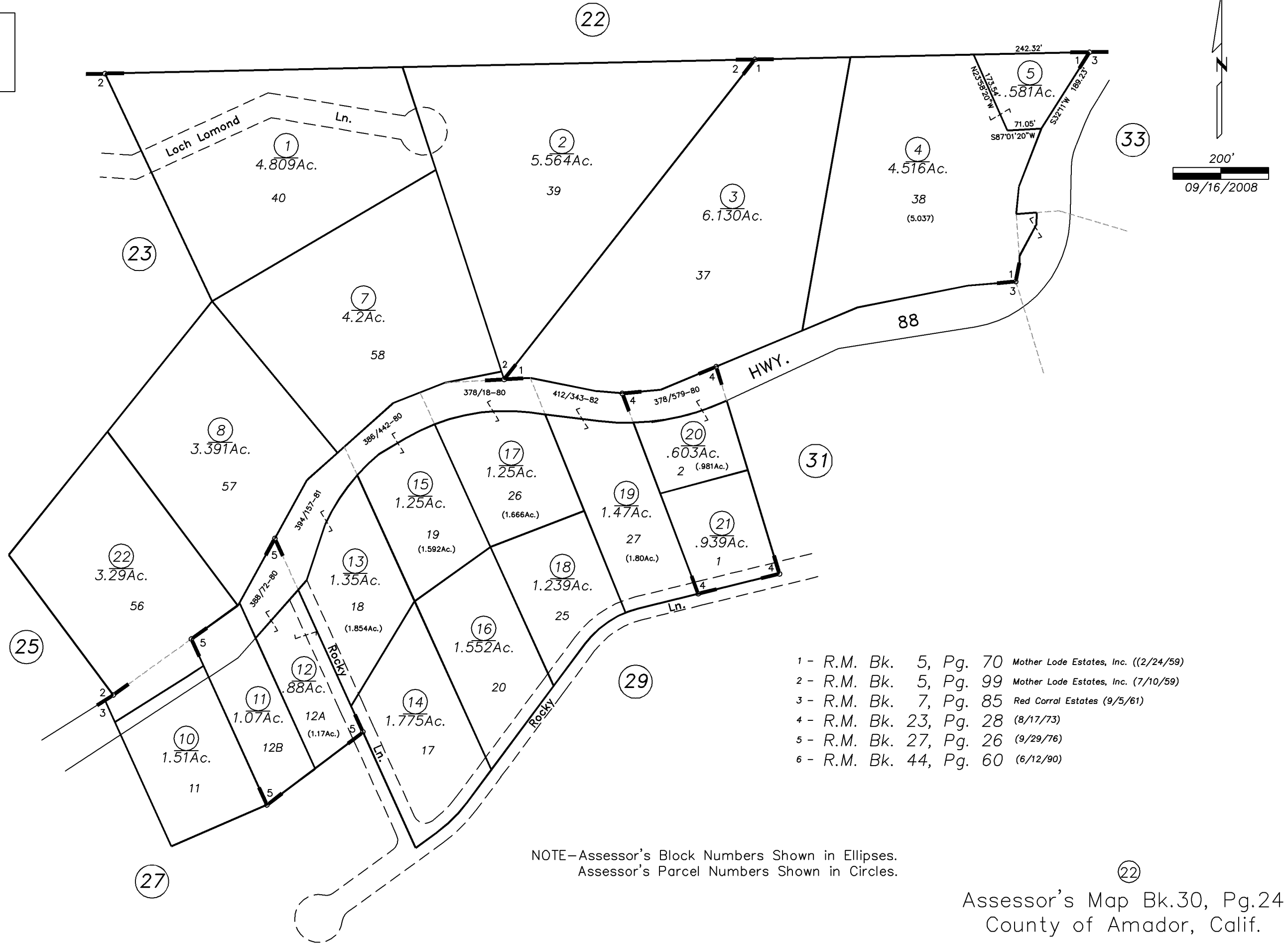


POR. SEC. 36, T.7N., R.12E., M.D.B. & M.

Tax Area Code
52-010

NOTE: This Map Was Prepared For Assessment Purposes Only. No Liability Is Assumed For The Accuracy Of The Data Delineated Hereon.



200'
09/16/2008

- 1 - R.M. Bk. 5, Pg. 70 Mother Lode Estates, Inc. ((2/24/59)
- 2 - R.M. Bk. 5, Pg. 99 Mother Lode Estates, Inc. (7/10/59)
- 3 - R.M. Bk. 7, Pg. 85 Red Corral Estates (9/5/61)
- 4 - R.M. Bk. 23, Pg. 28 (8/17/73)
- 5 - R.M. Bk. 27, Pg. 26 (9/29/76)
- 6 - R.M. Bk. 44, Pg. 60 (6/12/90)

NOTE-Assessor's Block Numbers Shown in Ellipses.
Assessor's Parcel Numbers Shown in Circles.

Assessor's Map Bk.30, Pg.24
County of Amador, Calif.