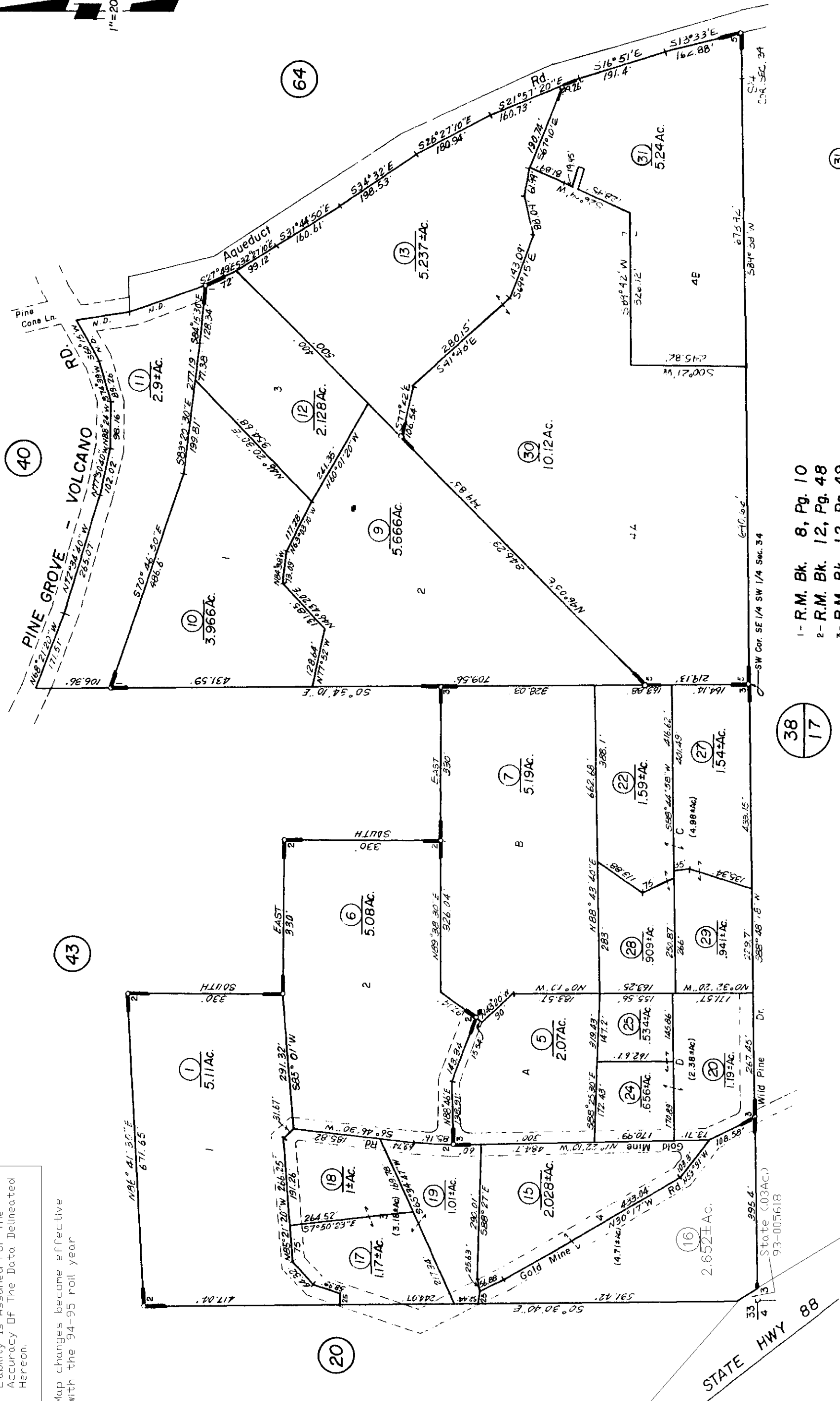


NOTE: This Map Was Prepared For Assessment Purposes Only. No Liability Is Assumed For The Accuracy Of The Data Delineated Hereon.

Map changes become effective with the 94-95 roll year



- 1- R.M. Bk. 8, Pg. 10
- 2- R.M. Bk. 12, Pg. 48
- 3- R.M. Bk. 12, Pg. 49
- 4- R.M. Bk. 39, Pg. 38
- 5- R.M. Bk. 40, Pg. 53

Assessor's Map Bk. 30, Pg. 41
County of Amador, Calif.

STATE HWY 88