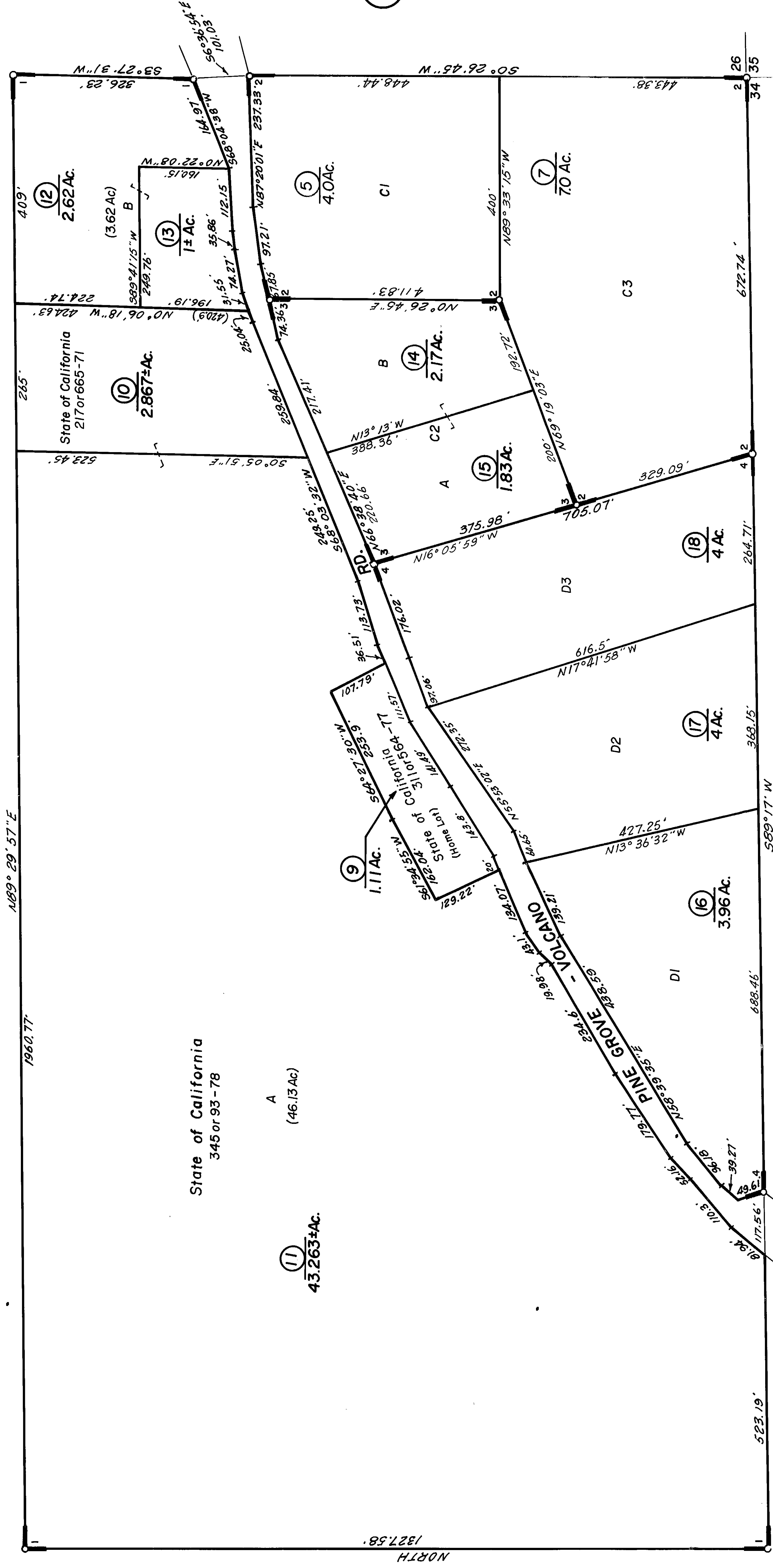


5



5

6

14

18

- 1 - R.M. Bk. 16, Pg. 66
- 2 - R.M. Bk. 16, Pg. 70
- 3 - R.M. Bk. 20, Pg. 71

- 4 - R.M. Bk. 23, Pg. 16
- R.M. Bk. 37, Pg. 20

NOTE—Assessor's Block Numbers Shown in Ellipses.
Assessor's Parcel Numbers Shown in Circles.