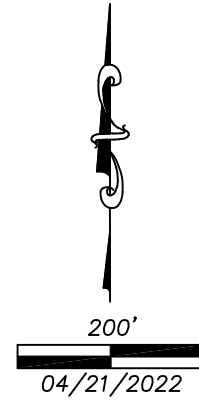
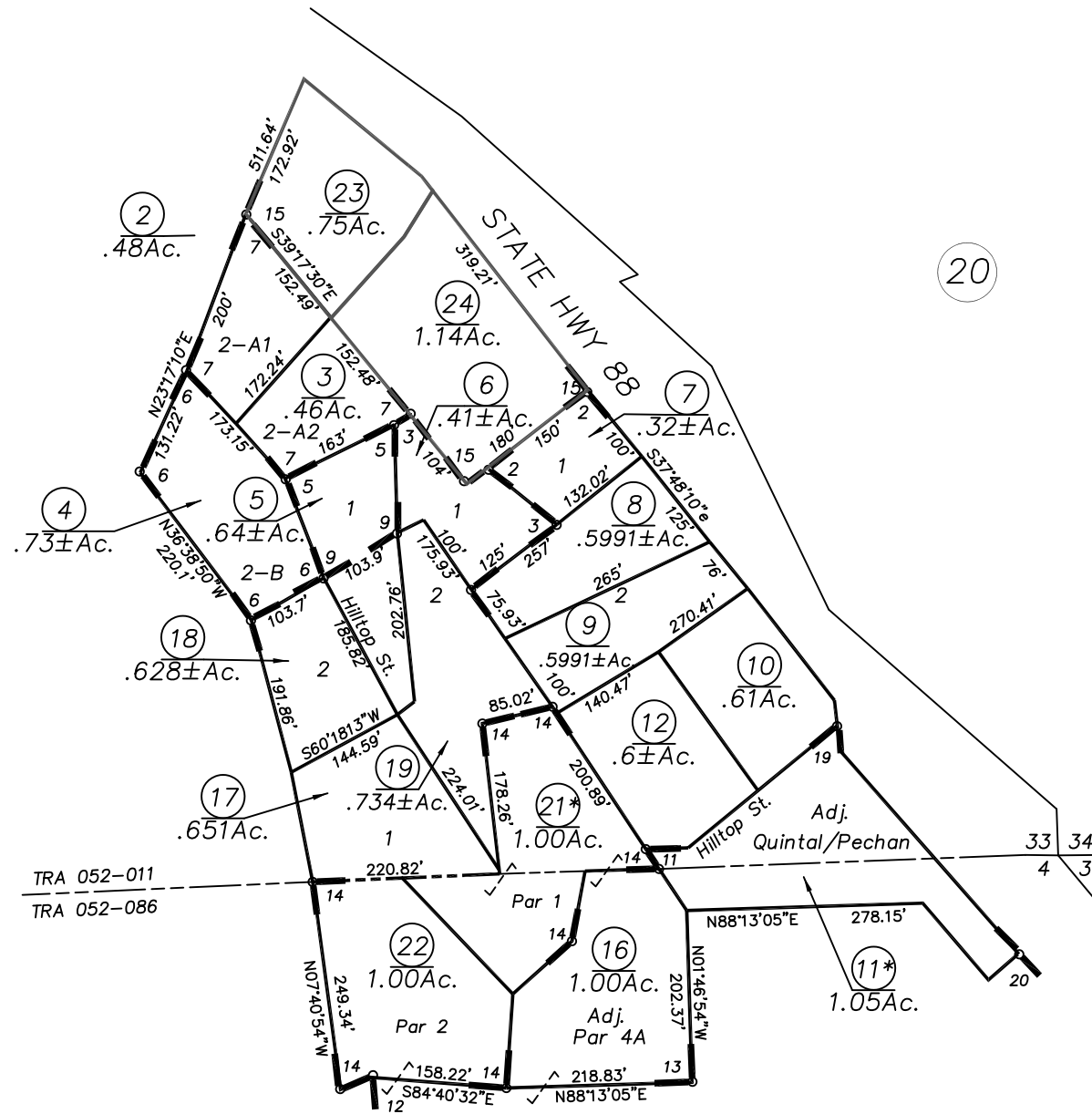


IMPORTANT NOTE: This map was prepared for property tax assessment purposes only. It is assumed that the property, as described in it's deed, is the property being assessed. No liability is assumed for the accuracy of the data delineated hereon.

*Note: Sec 606 R&T code, multiple revenue districts



20



- 1- R.M.Bk. 6, Pg.53
- R.M.Bk. 7, Pg.40
- 2- R.M.Bk. 8, Pg.21
- 3- R.M.Bk.20, Pg.79
- 4- R.M.Bk.23, Pg.66
- 5- R.M.Bk.23, Pg.70
- 6- R.M.Bk.26, Pg.12
- 7- R.M.Bk.28, Pg.36
- 8- R.M.Bk.43, Pg.75 (6/6/1989)
- 9- R.M.Bk.44, Pg.44 (4/20/1990)
- 10- R.M.Bk.47, Pg.89 (10/25/1993)
- 11- R.M.Bk.52, Pg.41 (4/27/1999)
- 12- R.M.Bk.54, Pg.69 (5/21/2002)
- 13- R.M.Bk.57, Pg.52 (2/09/2005)
- 14- P.M.Bk.61, Pg.09 (10/7/2008)
- 15- P.M.Bk.67, Pg.01 (12/21/2021)

22