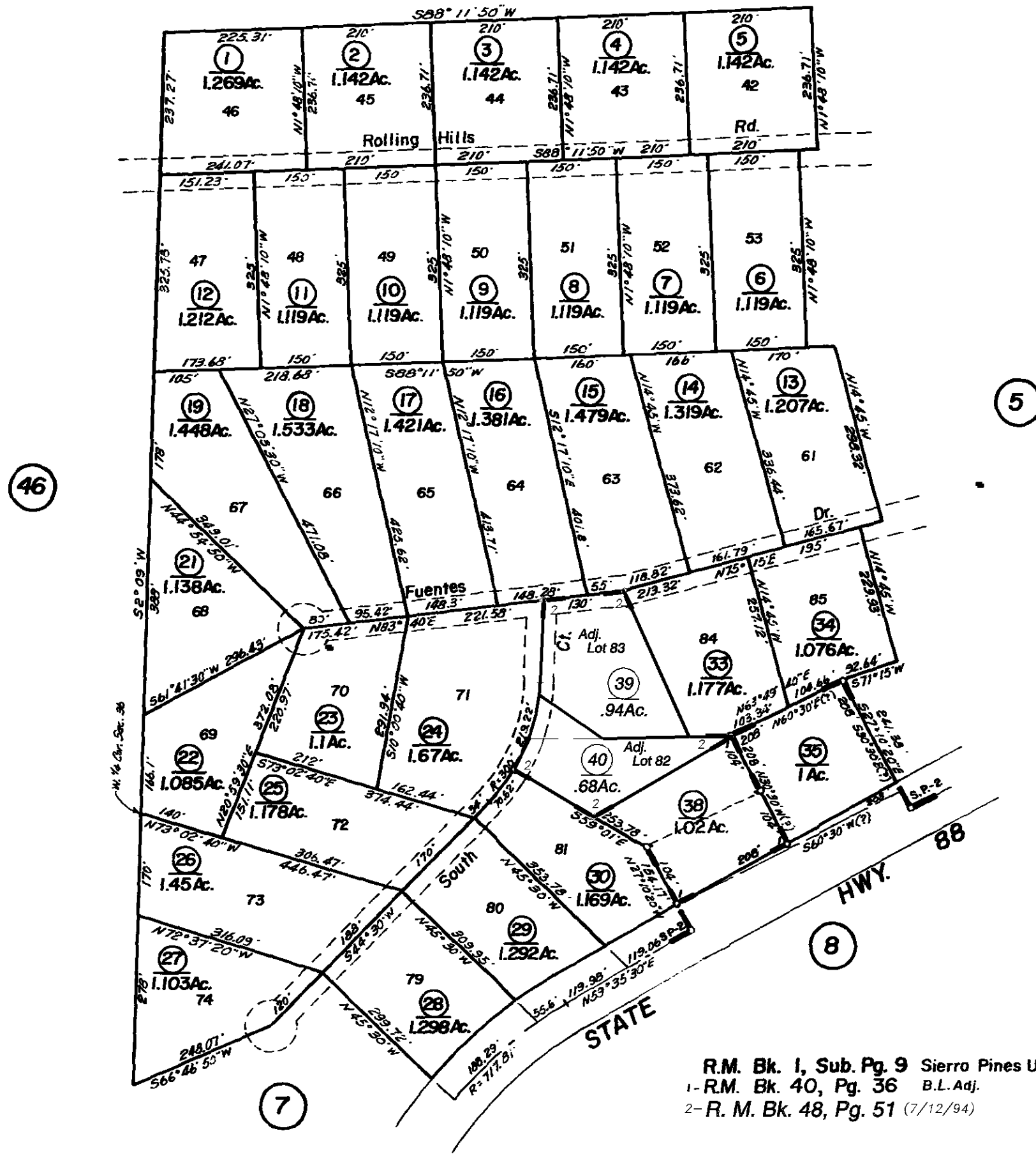


1

1"=200'



Map changes become effective with the 96-97 roll year. Parcel numbers are subject to change prior to adoption of roll on each July 1.

NOTE: This Map Was Prepared For Assessment Purposes Only. No Liability Is Assumed For The Accuracy Of The Data Delineated Hereon.

R.M. Bk. 1, Sub. Pg. 9 Sierr Pines Unit No. 2  
1- R.M. Bk. 40, Pg. 36 B.L. Adj.  
2- R. M. Bk. 48, Pg. 51 (7/12/94)

Assessor's Map Bk. 32, Pg. 04  
County of Amador, Calif.