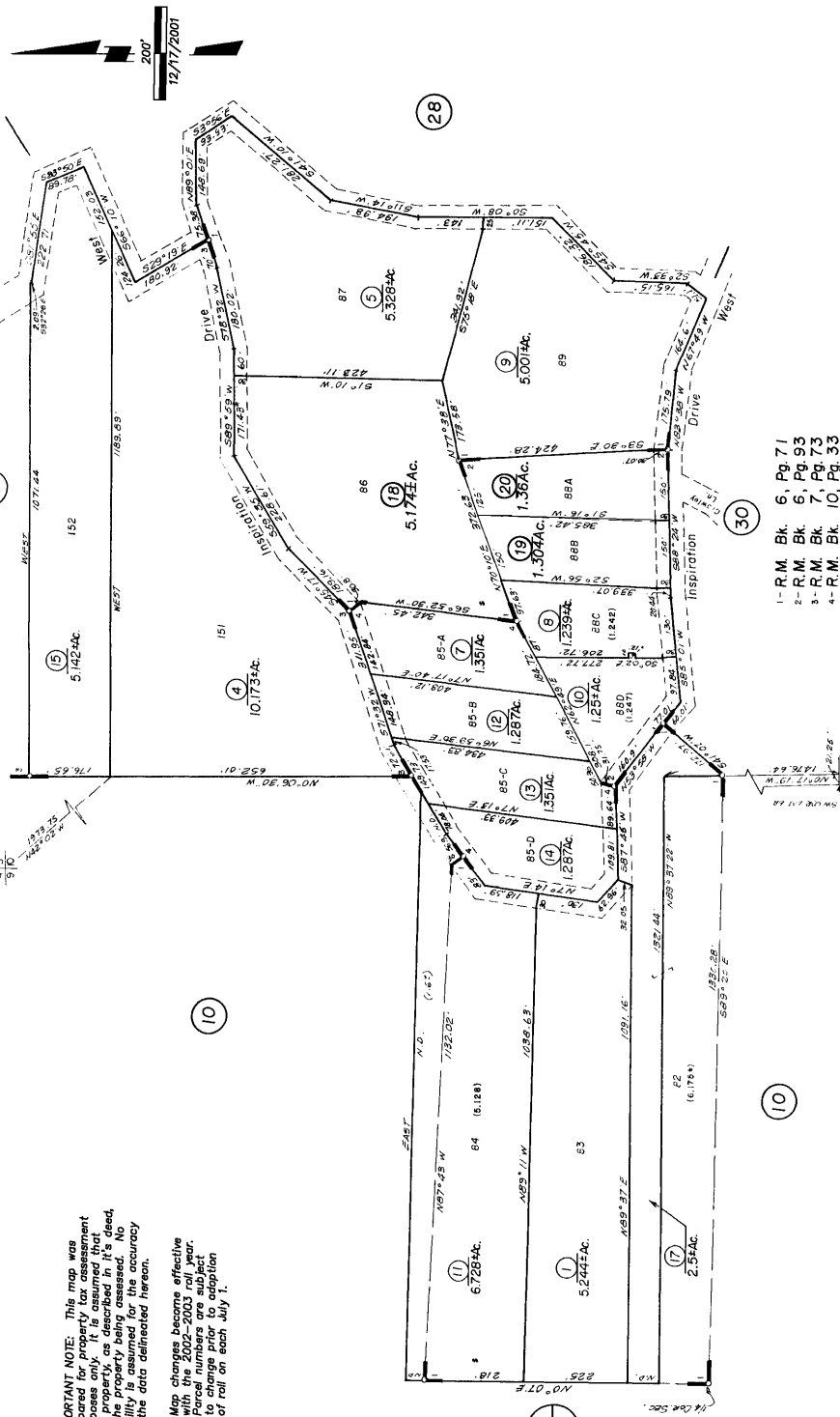


IMPORTANT NOTE: This map was prepared for property tax assessment purposes only. It is assumed that the property as described on this map is the property being assessed. No liability is assumed for the accuracy of the data delineated hereon.

Map changes become effective with the 2002-2003 roll year. The assessor reserves the right to change prior to adoption of roll on each July 1.



- 1 - R.M. Bk. 6, Pg. 71
- 2 - R.M. Bk. 6, Pg. 93
- 3 - R.M. Bk. 7, Pg. 73
- 4 - R.M. Bk. 10, Pg. 33