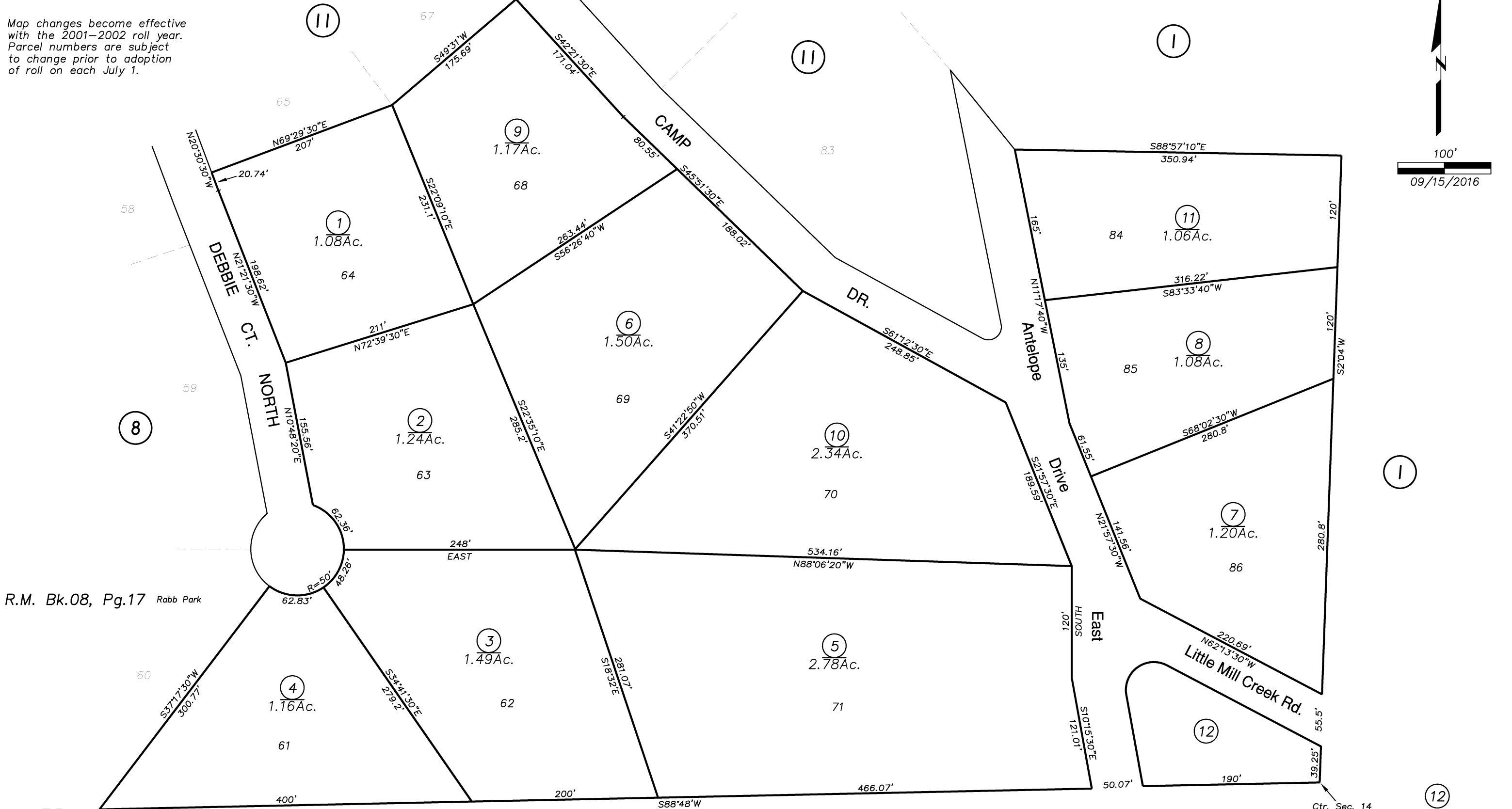
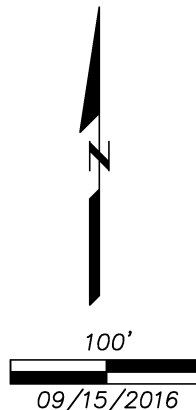


POR. NW 1/4, SEC. 14, T.7N, R.13E, M.D.B.&M.

IMPORTANT NOTE: This map was prepared for property tax assessment purposes only. It is assumed that the property, as described in it's deed, is the property being assessed. No liability is assumed for the accuracy of the data delineated hereon.

Map changes become effective with the 2001-2002 roll year. Parcel numbers are subject to change prior to adoption of roll on each July 1.

All roads shown have not been accepted by the County of Amador; title remains in original developer. APN should have been separately assigned when page was drawn - it is not being done at this time because potential exists for tax default.



R.M. Bk.08, Pg.17 Rabb Park

Ctr. Sec. 14

NOTE-Assessor's Block Numbers Shown in Ellipses.
Assessor's Parcel Numbers Shown in Circles.