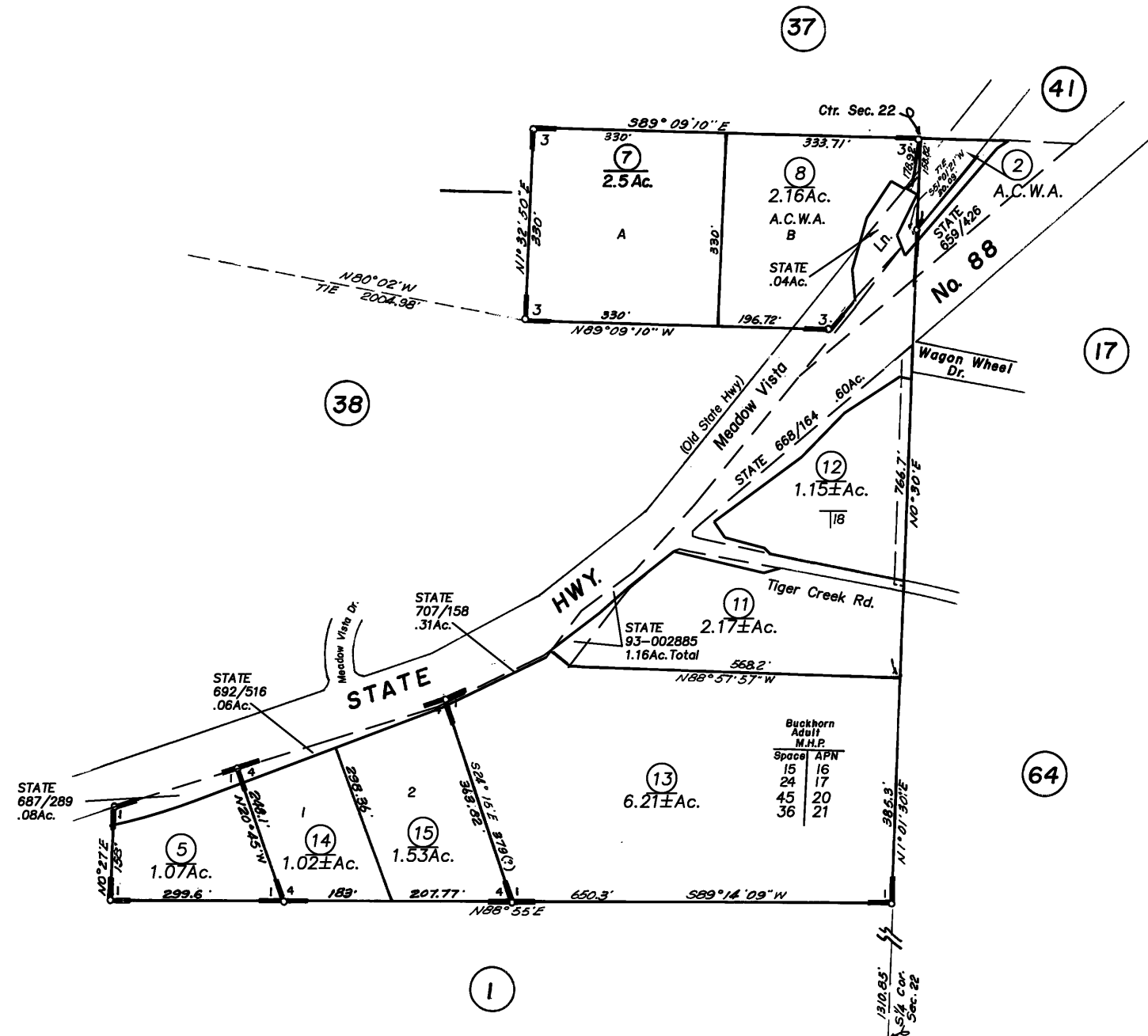
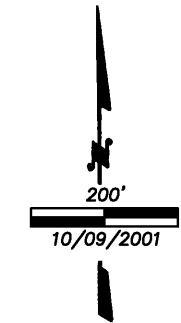


POR. S 1/2, SEC. 22, T. 7N., R. 13E., M.D.B. & M.

33-16

IMPORTANT NOTE: This map was prepared for property tax assessment purposes only. It is assumed that the property, as described in it's deed, is the property being assessed. No liability is assumed for the accuracy of the data delineated hereon.

Map changes become effective with the 2005-2006 roll year. Parcel numbers are subject to change prior to adoption of roll on each July 1.



- 1- R.M. Bk. 3, Pg. 75
- 2- R.M. Bk. 16, Pg. 59
- 3- R.M. Bk. 21, Pg. 96
- 4- P.M. Bk. 34, Pg. 77

NOTE—Assessor's Block Numbers Shown in Ellipses.
Assessor's Parcel Numbers Shown in Circles.

Assessor's Map Bk. 33, Pg. 16
County of Amador, Calif.