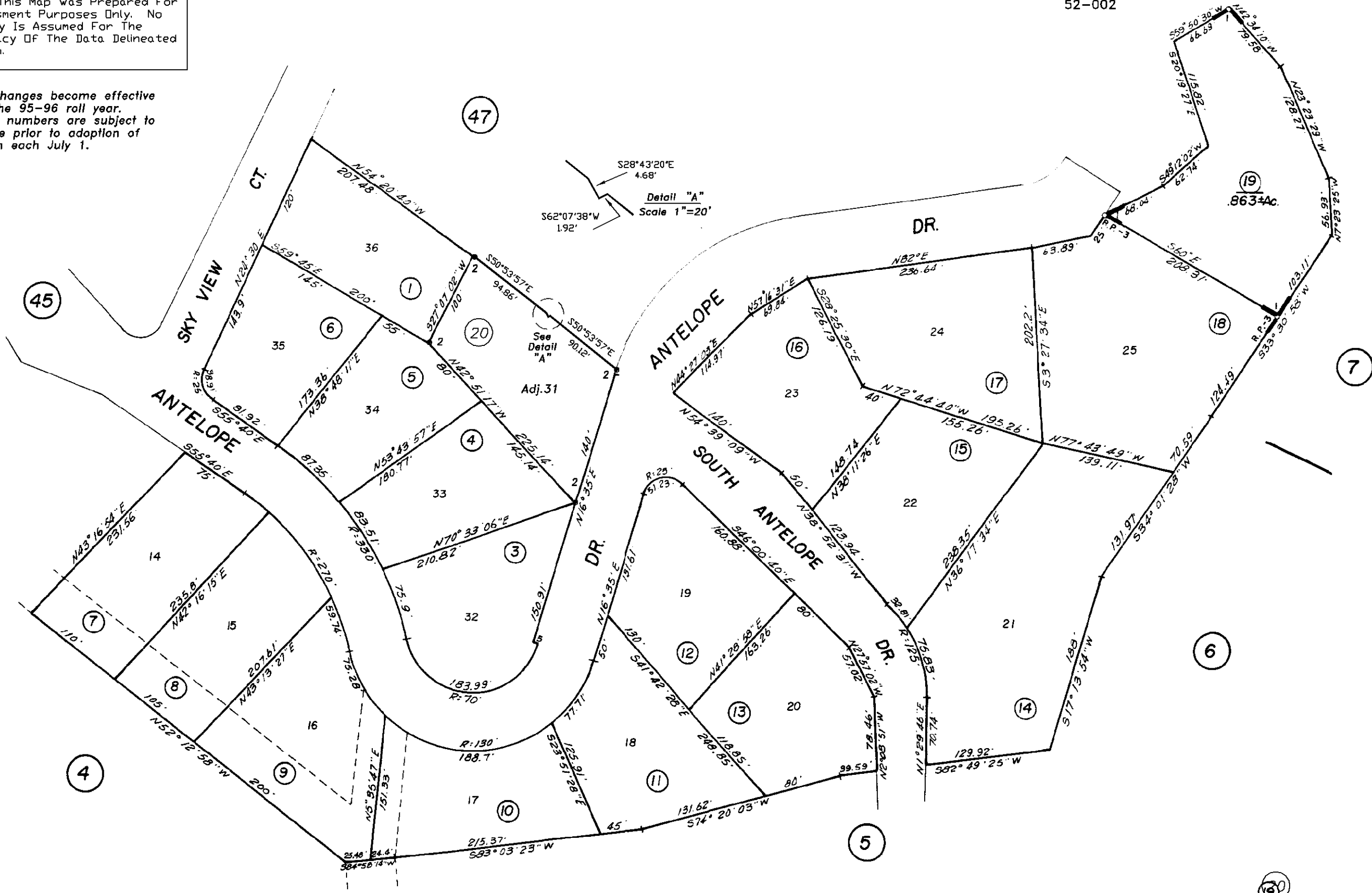


NOTE: This Map Was Prepared For Assessment Purposes Only. No Liability Is Assumed For The Accuracy Of The Data Delineated Hereon.

Map changes become effective with the 95-96 roll year. Parcel numbers are subject to change prior to adoption of roll on each July 1.

1"=100'



1- R.M. Bk. 14, Pg. 16
R.M. Bk. 2, Sub. Pg. 47 - Rabb Park Unit 3
2- R.M. Bk. 46, Pg. 51 (5/1/92)

Assessor's Map Bk. 33 , Pg. 46
County of Amador, Calif.