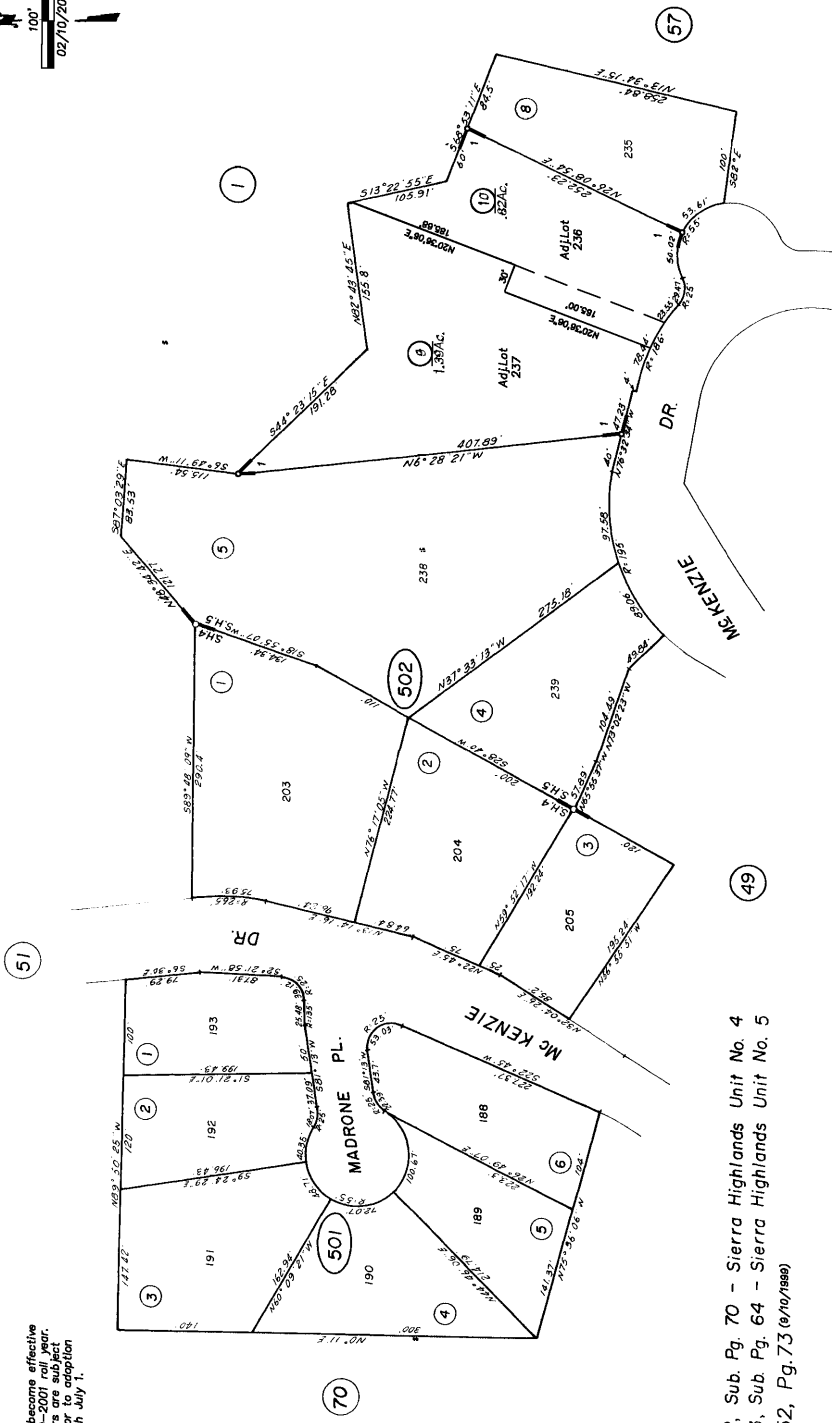
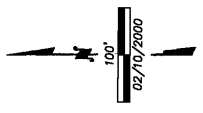


IMPORTANT NOTE: This map was prepared for property tax assessment purposes only. It is not a warranty of the property as described in it's deed, is the property being assessed. No liability is assumed for the accuracy of the data delineated hereon.

Map changes become effective with the 2000-2001 roll year. Parcel numbers are subject to change prior to adoption of roll on each July 1.



R.M. Bk 2, Sub. Pg. 70 - Sierra Highlands Unit No. 4
R.M. Bk 3, Sub. Pg. 64 - Sierra Highlands Unit No. 5
1-R.M.Bk.52, Pg.73 (9/10/1989)

NOTE—Assessor's Block Numbers Shown in Ellipses.
Assessor's Parcel Numbers Shown in Circles.