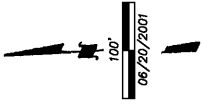
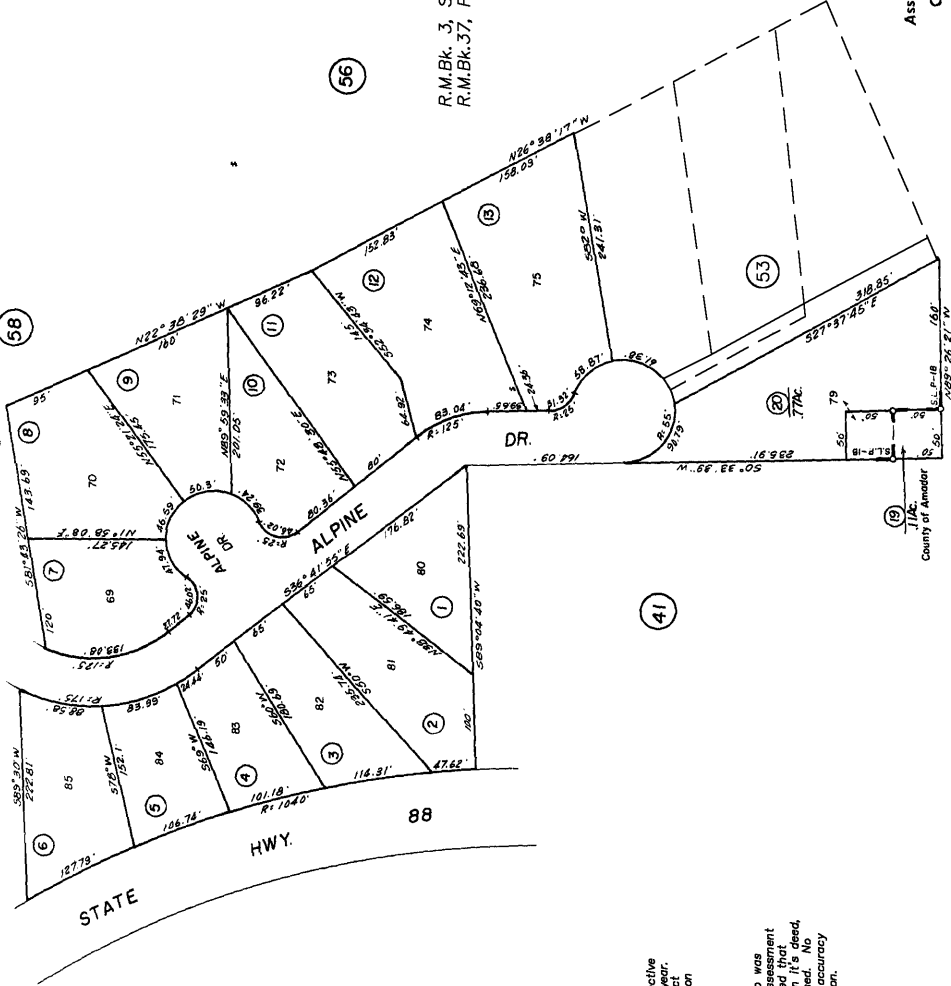


POR. SEC. 22, T. 7N., R. 13E., M.D.B. & M.



R.M.Bk. 3, Sub. Pg. 71 Silver Lake Phase Unit No. 18  
 R.M.Bk. 37, Pg. 43 B.L.A.G.



Map changes become effective with the 2001-2002 roll year. The Assessor's Office reserves the right to change prior to adoption of roll on each July 1.

IMPORTANT NOTE: This map was prepared for assessment purposes only. It is assumed that the property, as described in it's deed, is the property being assessed. No liability is assumed for the accuracy of the data delineated hereon.