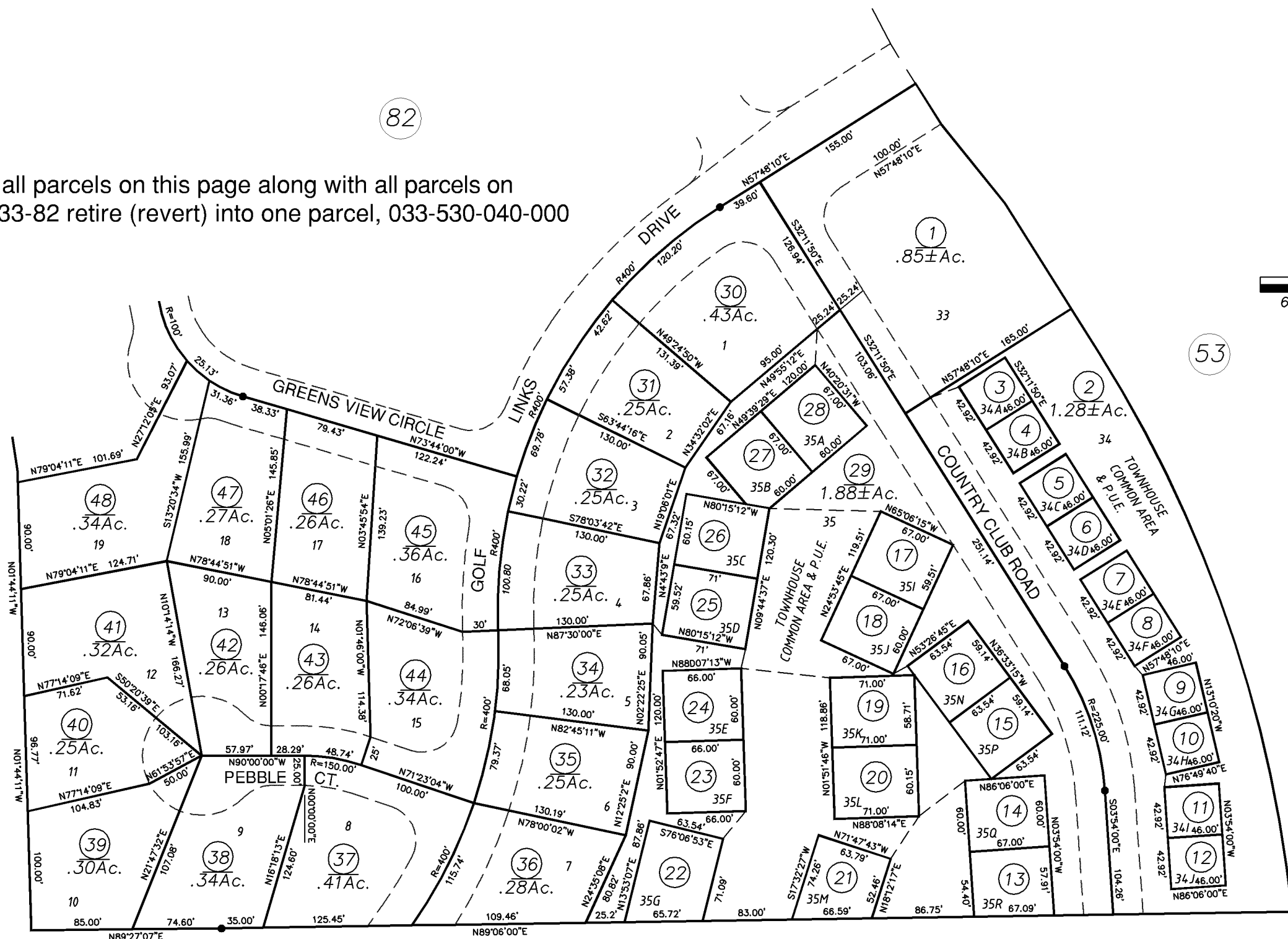
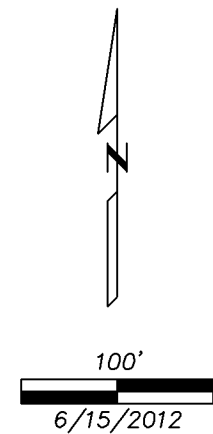


82

Note: all parcels on this page along with all parcels on page 33-82 retire (revert) into one parcel, 033-530-040-000



1

53

IMPORTANT NOTE: This map was prepared for property tax assessment purposes only. It is assumed that the property, as described in it's deed, is the property being assessed. No liability is assumed for the accuracy of the data delineated hereon.

Map changes become effective with the 2007-2008 roll year. Parcel numbers are subject to change prior to adoption of roll on each July 1.

R.M. Bk. 8, Sub Pg. 4 FAIRWAY PINES UNIT 1A
R.M. Bk. 8, Sub Pg. 91 FAIRWAY PINES UNIT 1B

Assessor's Map Bk. 33, Pg. 83
County of Amador, Calif.

1