

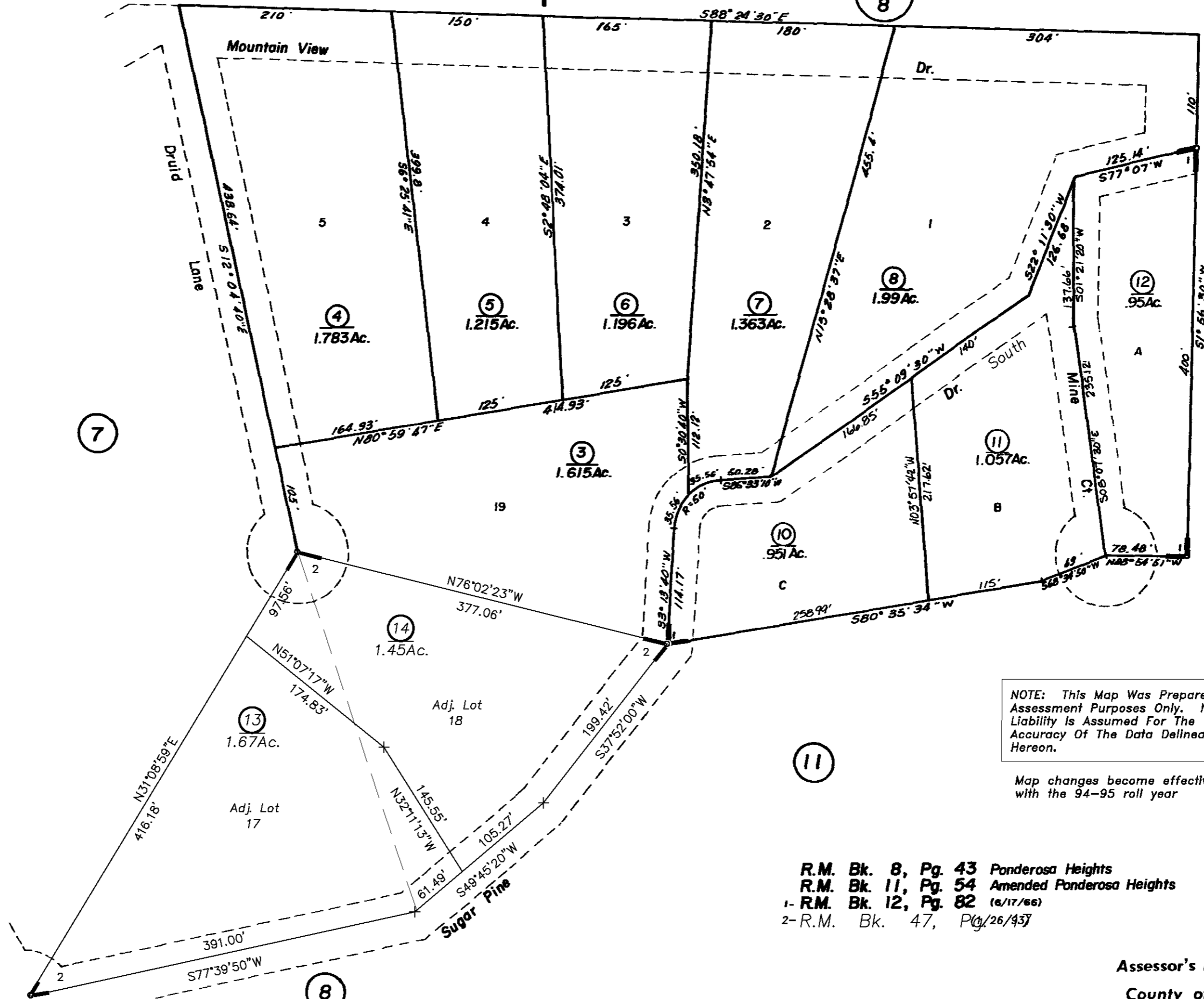
30  
53

POR. NW 1/4 SEC. 5, T. 6N., R. 12E., M.D.B. & M.

30  
8

38-10

1"=100'



NOTE: This Map Was Prepared For Assessment Purposes Only. No Liability Is Assumed For The Accuracy Of The Data Delineated Hereon.

Map changes become effective with the 94-95 roll year

R.M. Bk. 8, Pg. 43 Ponderosa Heights  
 R.M. Bk. 11, Pg. 54 Amended Ponderosa Heights  
 1- R.M. Bk. 12, Pg. 82 (6/17/66)  
 2- R.M. Bk. 47, Pg. 26/43

14