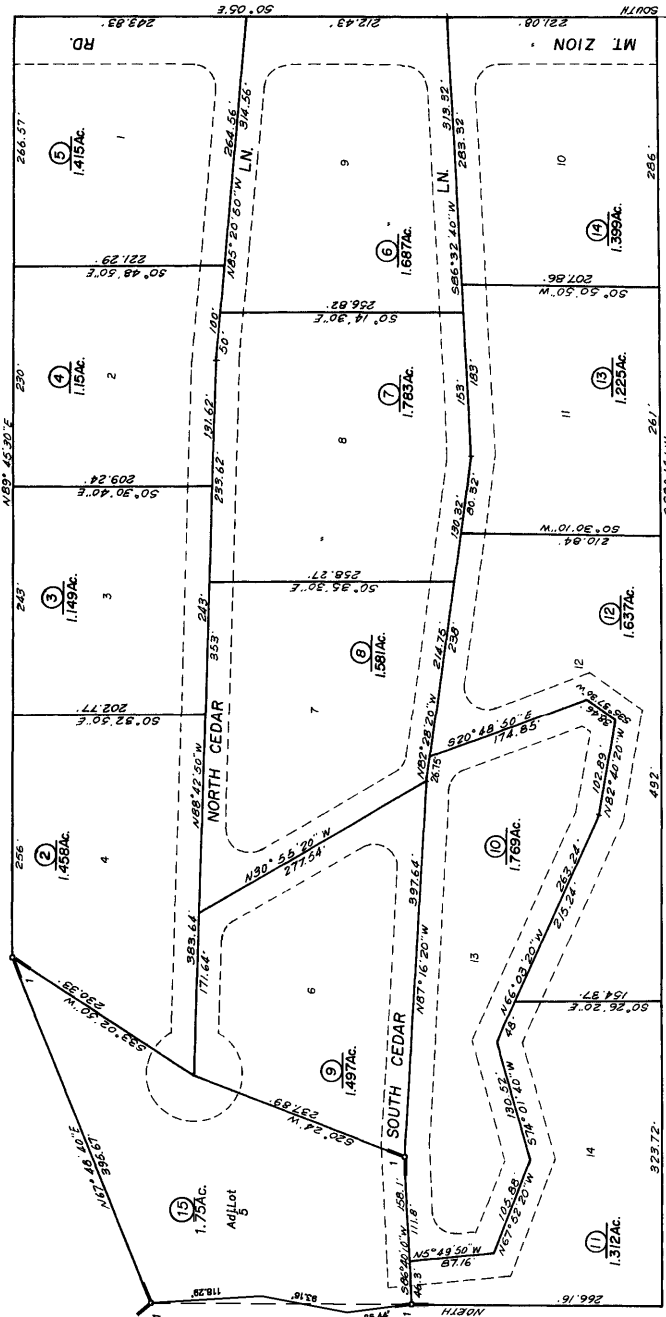


(1)



(17)

(14)

(14)

Map changes become effective with the 2003-2004 roll year. The assessor is required to change prior to adoption of roll on each July 1.

IMPORTANT NOTE: This map was prepared for property tax assessment purposes only. It is assumed that the information is correct and liability is assumed for the accuracy of the data delineated hereon.

R.M. Bk. 7, Pg. 9 Oak Park Subj.  
1-R.M.Bk. 48, Pg.50 (07/12/1994)