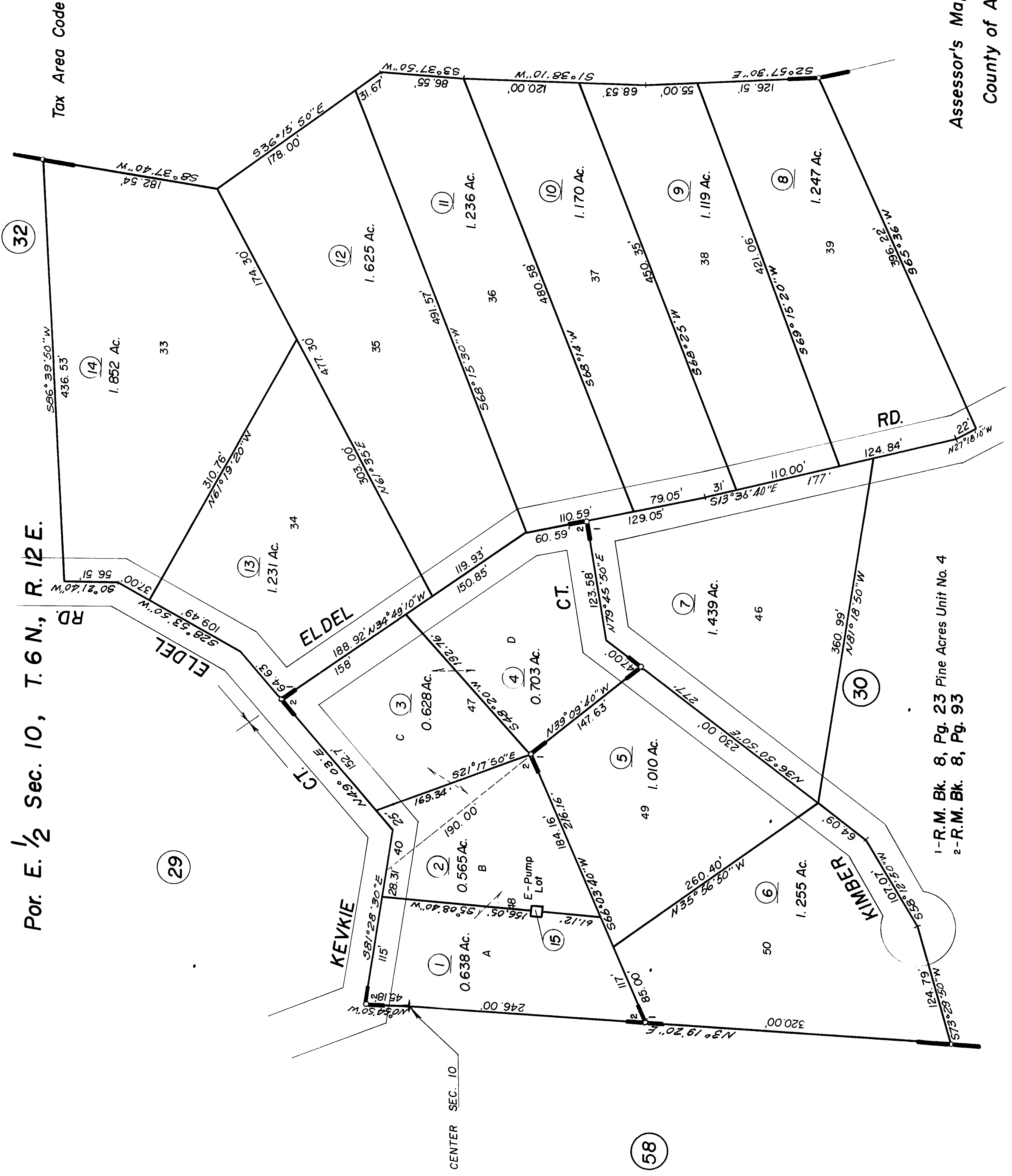
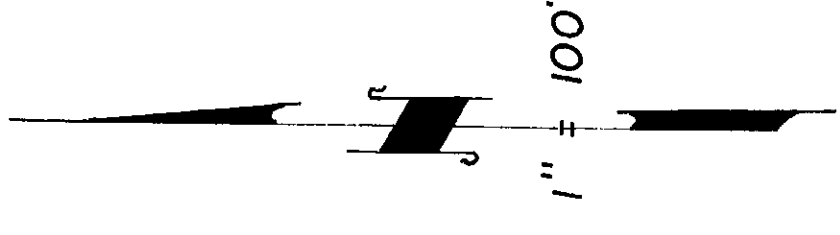


Por. E. 1/2 Sec. 10, T. 6 N., R. 12 E.

38-31



1-R.M. Bk. 8, Pg. 23 Pine Acres Unit No. 4
2-R.M. Bk. 8, Pg. 93

Assessor's Map Bk. 38 - Pg. 31
County of Amador, Calif.

(15)

(57)

(58)

(29)

(32)

(30)

(14)

(12)

(11)

(10)

(9)

(8)

(13)

(7)

(3)

(4)

(5)

(1)

(2)

(3)

(13)

(14)

(11)

(10)

(9)

(8)

(7)

(6)

(5)

(4)

(3)

(2)

(1)