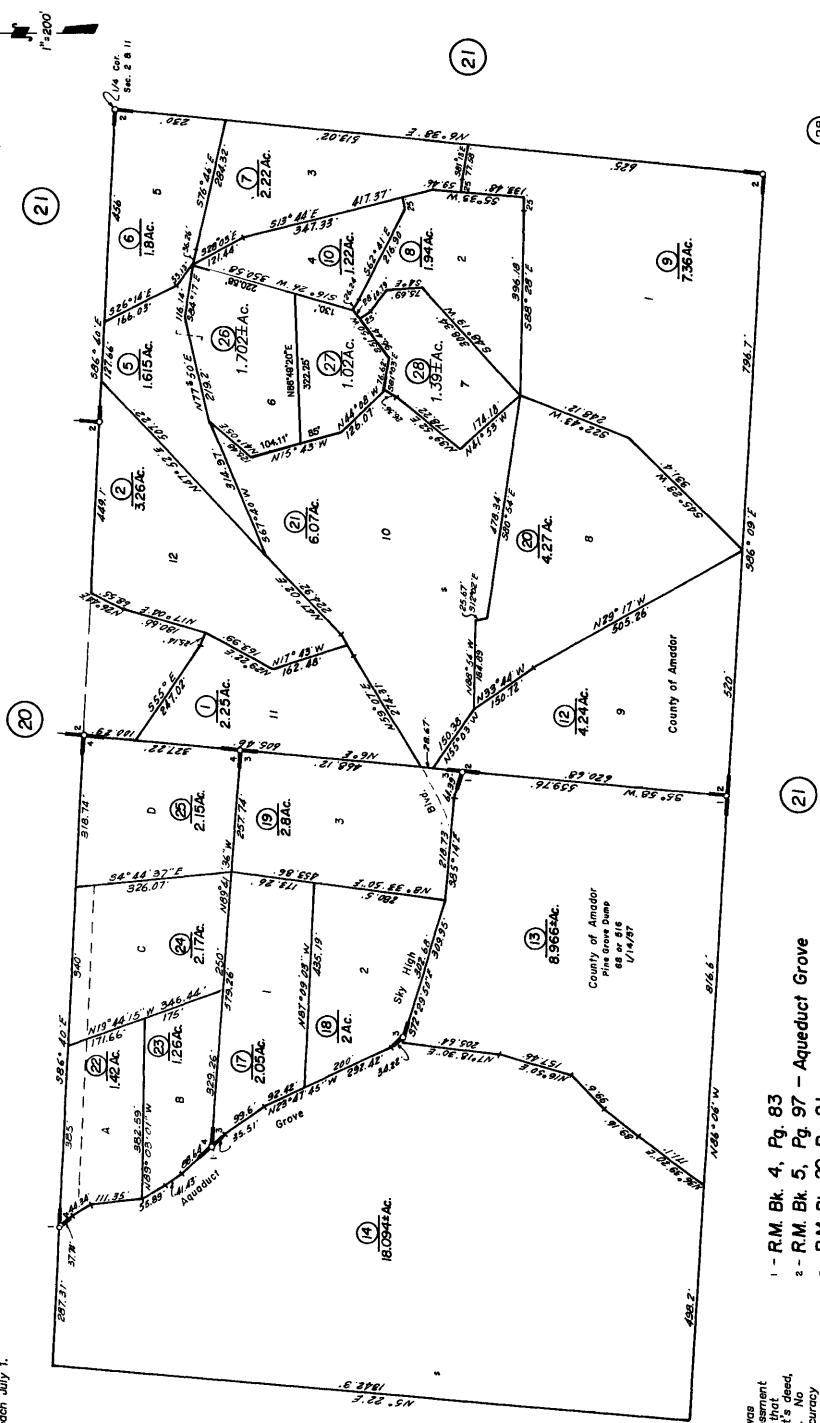


Map changes become effective with the 2001-2002 roll year. Property owners are advised to change prior to adoption of roll on each July 1.



IMPORTANT NOTE: This map was prepared for assessment purposes only. It is assumed that the property, as described in it's deed, is the property being assessed. No liability is assumed for the accuracy of the data delineated hereon.

- 1 - R.M. Bk. 4, Pg. 83
- 2 - R.M. Bk. 5, Pg. 97 - Aqueduct Grove
- 3 - R.M. Bk. 20, Pg. 21
- 4 - R.M. Bk. 20, Pg. 24

NOTE—Assessor's Block Numbers Shown in Ellipses. Assessor's Parcel Numbers Shown in Circles.

Assessor's Map Bk. 38 , Pg. 34
County of Amador, Calif.