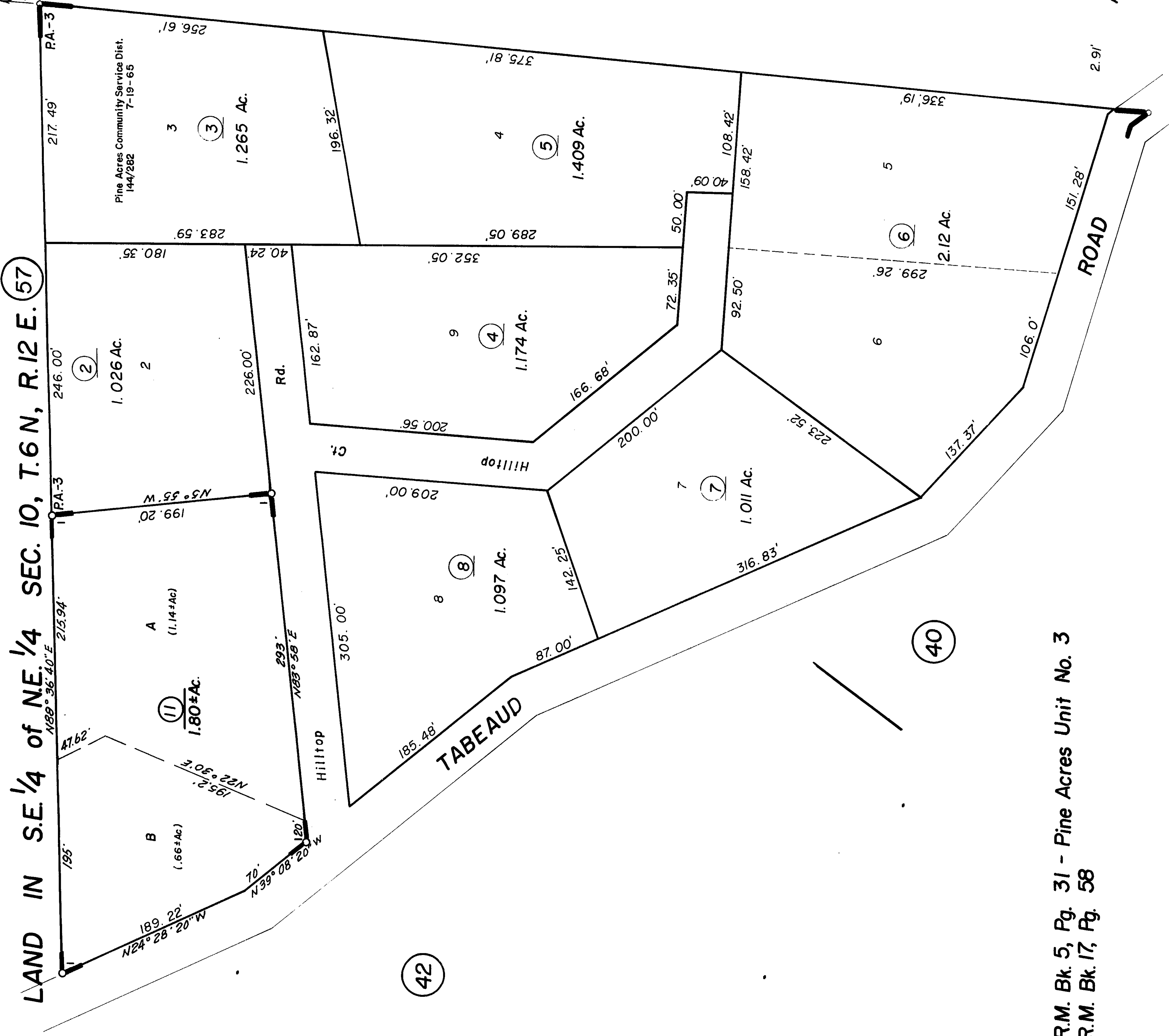
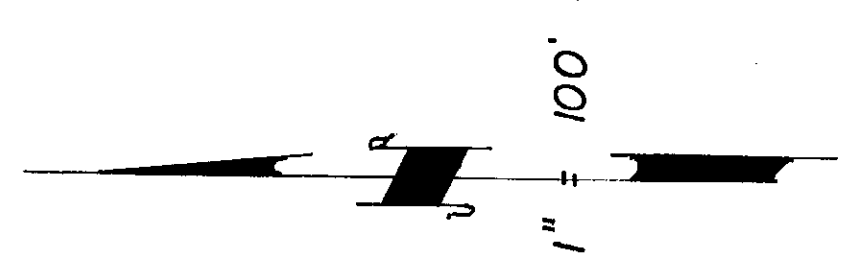


SUBDIVIDED LAND IN S.E. 1/4 of N.E. 1/4 SEC. 10, T.6 N, R.12 E. (57)

N. 05° 22' E. to N.E. Cor. of Sec. 10

Tax Area Code

38-35



R.M. Bk. 5, Pg. 31 - Pine Acres Unit No. 3
 1- R.M. Bk. 17, Pg. 58

Assessor's Map Bk. 38 -Pg. 35
 County of Amador, Calif.