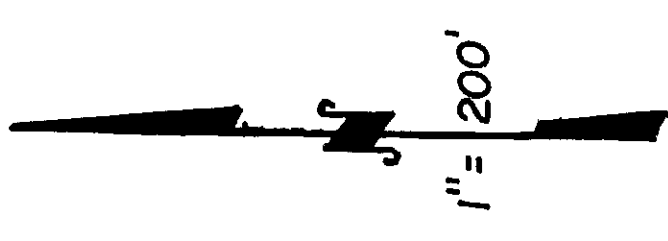
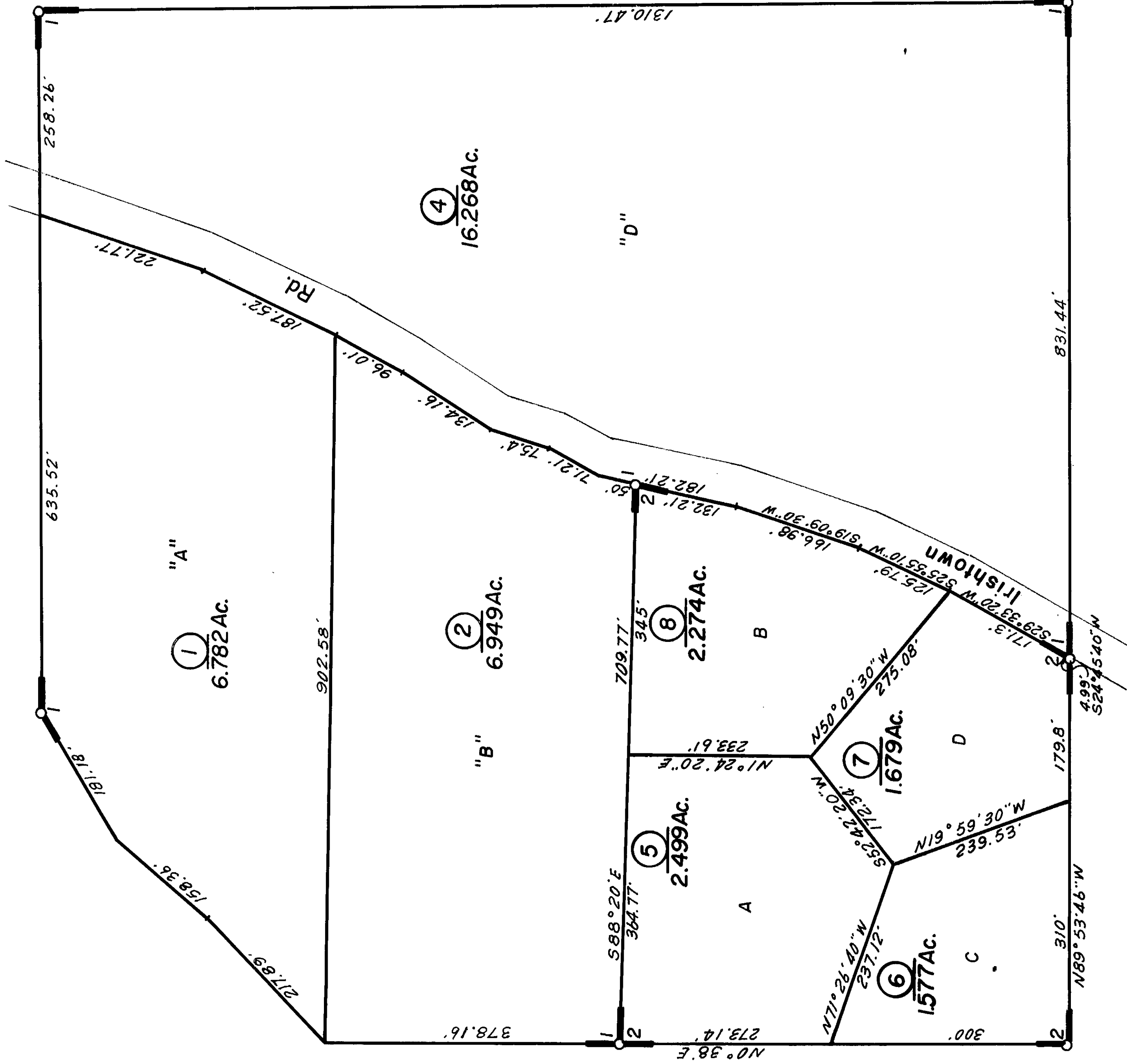


POR. NE 1/4 SEC. 8, T.6N., R.12E., M.D.B. & M.



13



1

4
16.268Ac.

1
6.782Ac.

2
6.949Ac.

5
2.499Ac.

8
2.274Ac.

6
1.577Ac.

7
1.679Ac.

25

1 - R.M. Bk. 13, Pg. 54
2 - R.M. Bk. 15, Pg. 27

8

Assessor's Map Bk.38, Pg.44
County of Amador, Calif.

NOTE—Assessor's Block Numbers Shown in Ellipses.
Assessor's Parcel Numbers Shown in Circles.