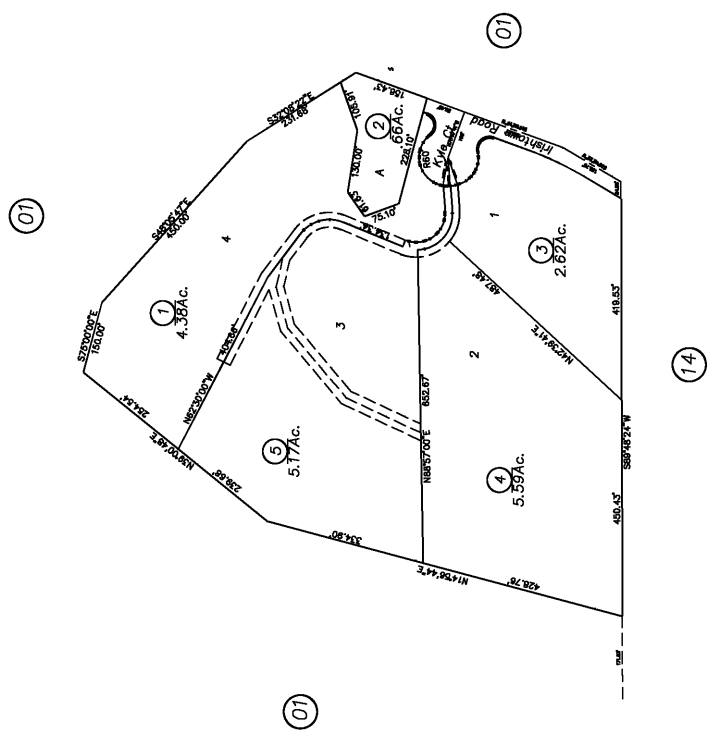
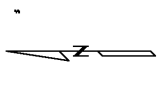


**IMPORTANT NOTE:** This map was prepared for property tax assessment purposes only. It is assumed that the property, as described in the assessment roll, is the same as the property shown on this map. The assessor's liability is assumed for the accuracy of the data delineated herein.

Map changes become effective with the 2003-2004 roll year. Parcel numbers are subject to change prior to adoption or roll on each July 1.



(5)

R.M.Bk.55, Pg. 2 (9/27/2002)