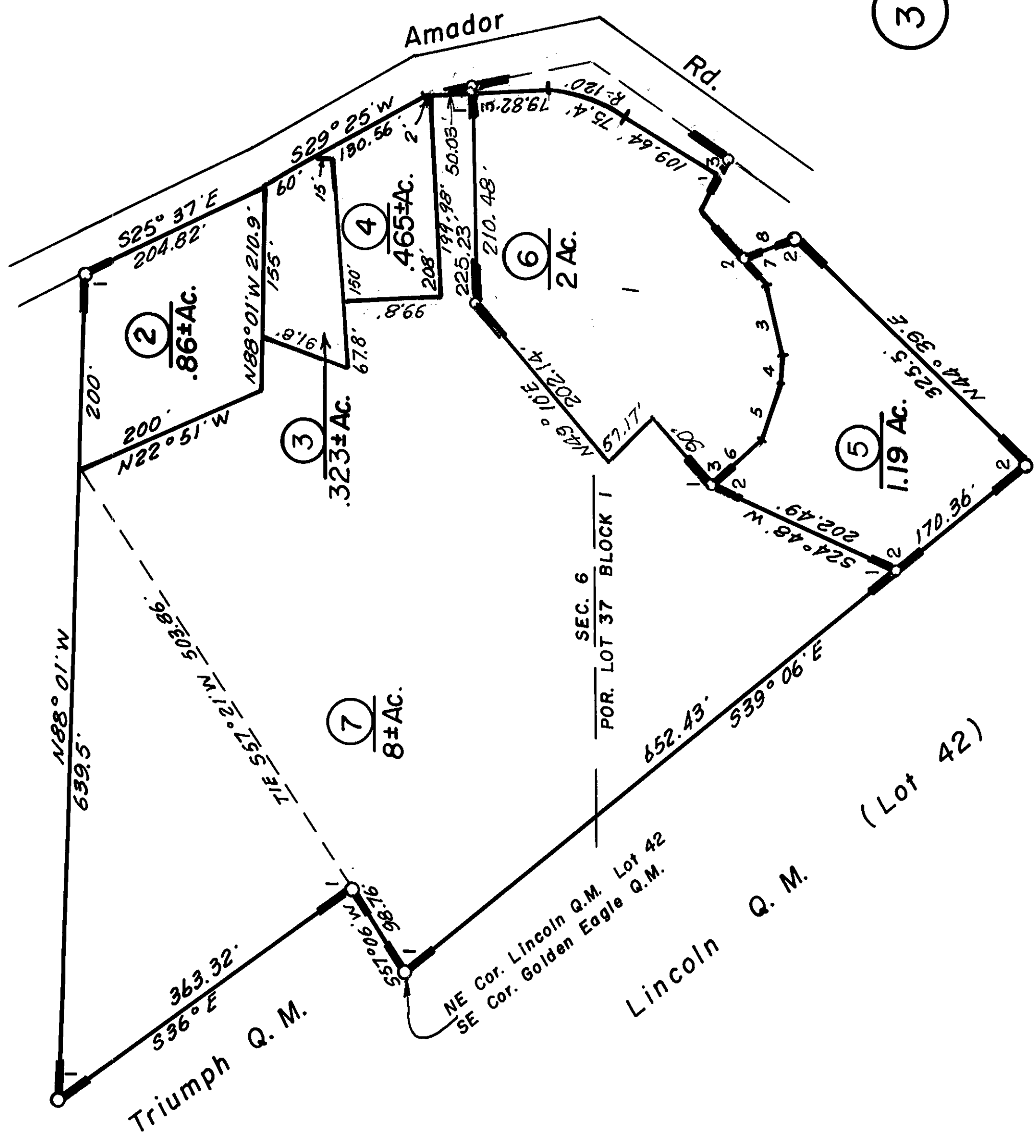


1



1. N62°51'W 61.57'
2. S47°03'W 96.74'
3. S76°54'W 79.94'
4. N86°50'W 25.37'
5. N77°30'W 60.62'
6. N44°07'W 66.6'
7. S47°03'W 31.27'
8. S21°01'E 59.41'

1

- 1-R.M. Bk. 1, Pg. 90
- R.M. Bk. 3, Pg. 37
- 2-R.M. Bk. 32, Pg. 38
- 3-P.M. Bk. 38, Pg. 69

7