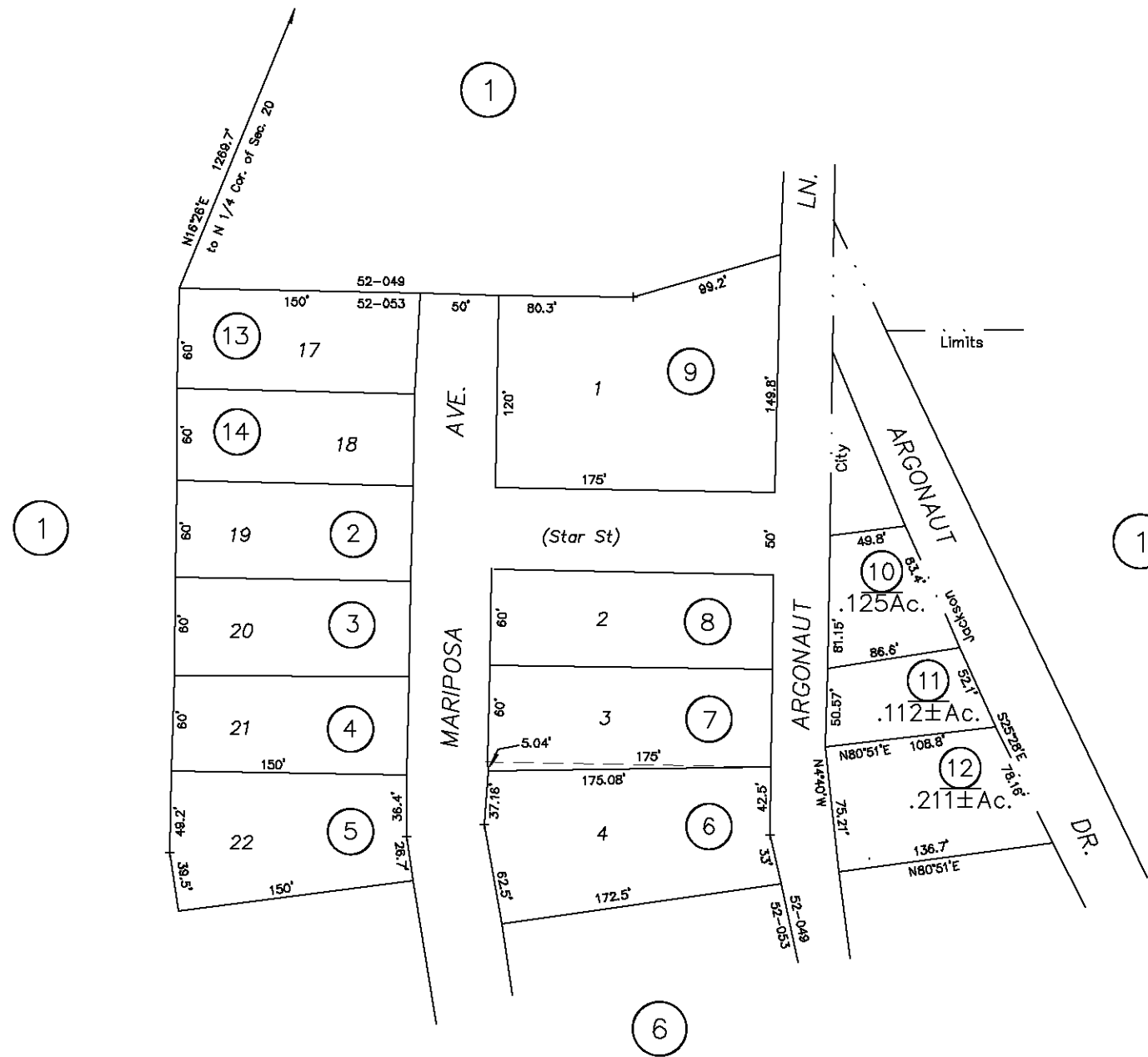




1"=100'



R.M.Bk. 4, Pg. 4 Victory Sub'n.
R.M.Bk. 4, Pg. 79

Map changes become effective with the 95-96 roll year. Parcel numbers are subject to change prior to adoption of roll on each July 1.

NOTE: This Map Was Prepared For Assessment Purposes Only. No Liability Is Assumed For The Accuracy Of The Data Delineated Hereon.

NOTE-Assessor's Block Numbers Shown in Ellipses. Assessor's Parcel Numbers Shown in Circles.

Assessor's Map Bk.44, Pg.05
County of Amador, Calif.

14