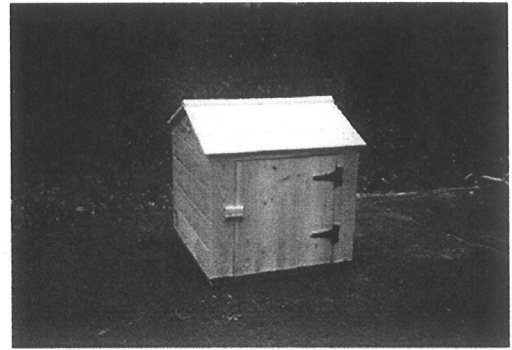
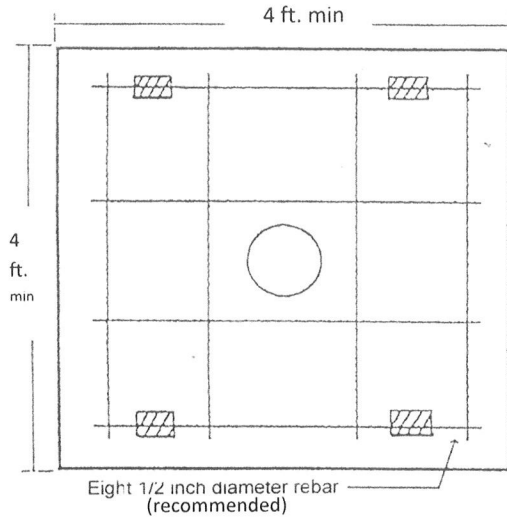
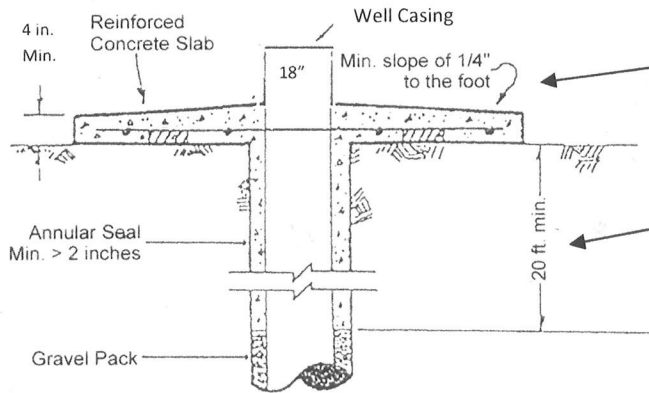


The Basics of Wellhead Protection



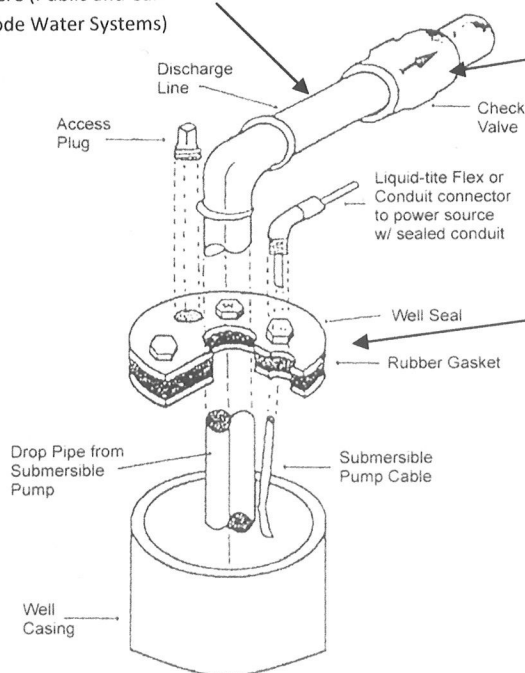
Example of a Well House



Surface Slab – Slope away from the well to protect the well from flooding.

Depth of Annual Seal - Public water systems must have a minimum 50-ft Annular Seal

Place **SAMPLE TAP** here (Public and Cal-Code Water Systems)



Check Valve – a check valve must be installed on the discharge line as close to the well head as possible and be located above ground.

Seal All Openings - Well head should be free of openings that could allow the entry of dust and other contaminants. **Casing Vents** shall be screened.



Keep your well safe from flooding, animals, and chemicals!